

# CERTIFICATE OF LOCATION OF GOVERNMENT CORNER

County of Anoka

State of Minnesota

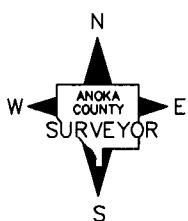
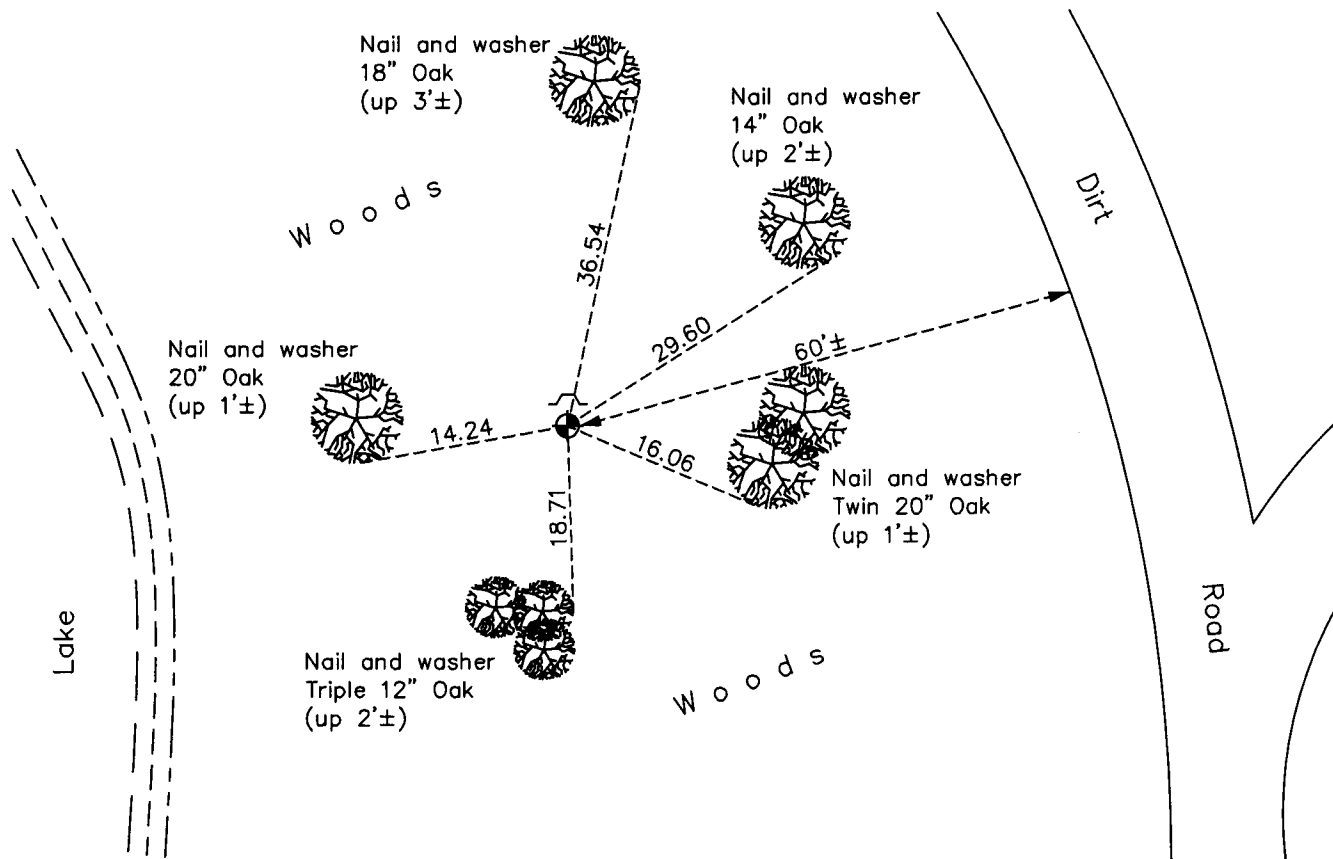
Witness Corner of Sec. 32 Township 34 Range 23  
 (On west line of section)

On the 22nd day of August, 1967, the described corner was evidenced by a 3/4" iron pipe

and to perpetuate the location of said corner, at the exact location thereof, a permanent marker was placed consisting of a cast iron monument with a sign and post on the north side

AND on the 20th day of December, 2012, said permanent marker was found with sign missing and the ties were updated

Updated reference ties are as shown below.



Revision Date  
11/26/13

N.A.D. 1983 Coordinates  
 (1996 Adjustment)

County Project Coordinates	
Northing	230492.9031
Easting	505625.9014
Date	5/20/02

I hereby certify that this United States public land survey monument record is correct and complete to the best of my knowledge and belief.

*Larry D. Hoium* Date 11/26/13

Larry D. Hoium, Anoka County Surveyor

Minnesota License Number 18165