

# CERTIFICATE OF LOCATION OF GOVERNMENT CORNER

County of Anoka

State of Minnesota

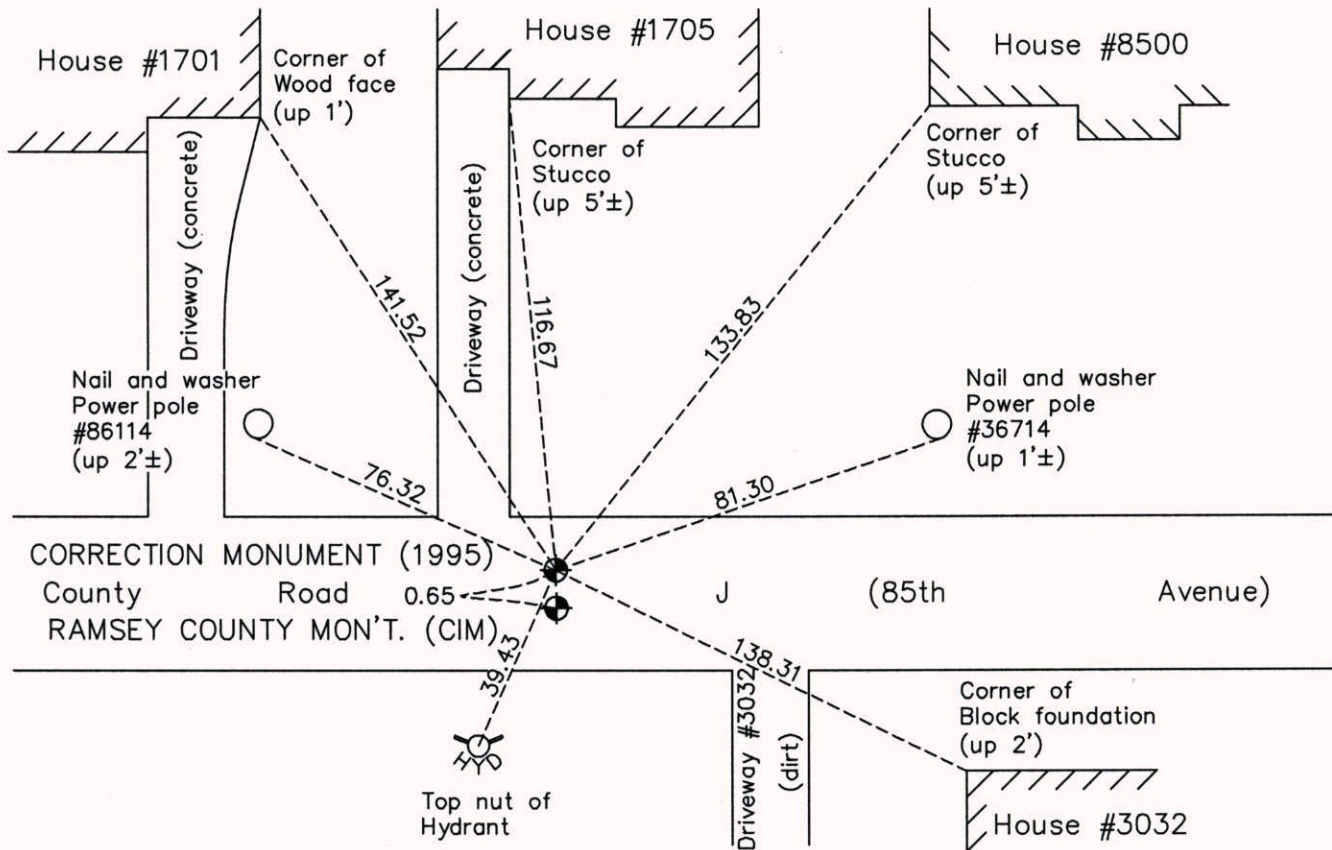
## Northeast Corner of Sec. 1 Township 30 Range 24

On the 19th day of April, 1963, the described corner was evidenced by a granite monument

and to perpetuate the location of said corner, at the exact location thereof, a permanent marker was placed consisting of a cast iron monument (CORRECTION MONUMENT 1995)

AND on the 17th day of November, 2014, said permanent marker was found and the ties were updated

Updated reference ties are as shown below.



Revision Date  
3/13/15

N.A.D. 1983 Coordinates  
(1996 Adjustment)

County Project Coordinates	
Northing	132544.9391
Easting	510061.7899
Date	11/18/03

I hereby certify that this United States public land survey monument record is correct and complete to the best of my knowledge and belief.

*Larry D. Hoium* Date 3/13/15

Larry D. Hoium, Anoka County Surveyor

Minnesota License Number 18165