

CERTIFICATE OF LOCATION OF GOVERNMENT CORNER

County of Anoka

State of Minnesota

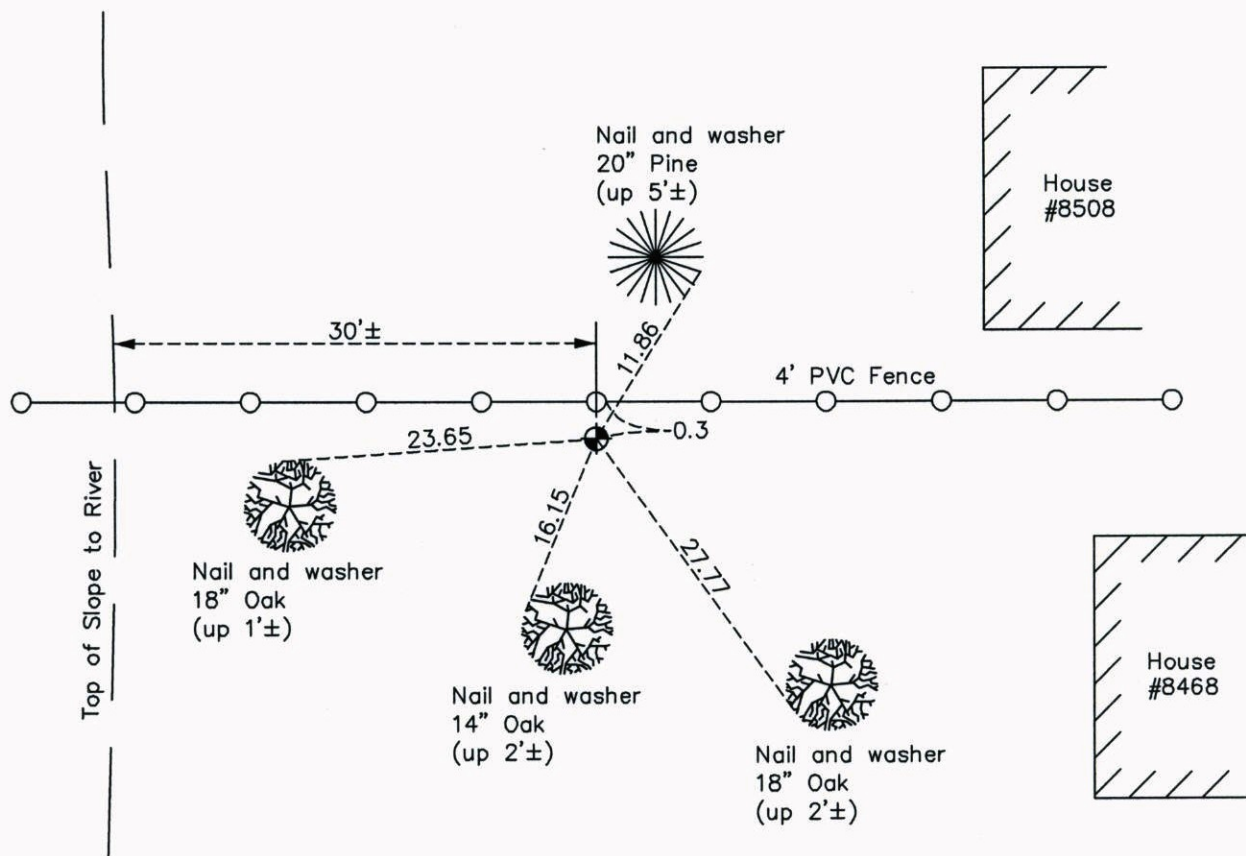
Witness Corner of Sec. 4 Township 30 Range 24
 (Witness Corner No. 8)

On the 7th day of July, 1966, the described corner was evidenced by a concrete
monument

and to perpetuate the location of said corner, at the exact location thereof, a permanent marker
 was placed consisting of a cast iron monument

AND on the 20th day of November, 2014, said permanent marker was found down 0.1'± and
the ties were updated

Updated reference ties are as shown below.



Revision Date
3/16/15

N.A.D. 1983 Coordinates
 (1996 Adjustment)

| County Project Coordinates | |
|----------------------------|--------------------|
| Northing | <u>132450.0115</u> |
| Easting | <u>492658.3969</u> |
| Date | <u>12/15/04</u> |

I hereby certify that this United States public land survey monument record is correct and complete to the best of my knowledge and belief.

Larry D. Hoium Date 3/16/15

Larry D. Hoium, Anoka County Surveyor
 Minnesota License Number 18165