

# CERTIFICATE OF LOCATION OF GOVERNMENT CORNER

County of Anoka

State of Minnesota

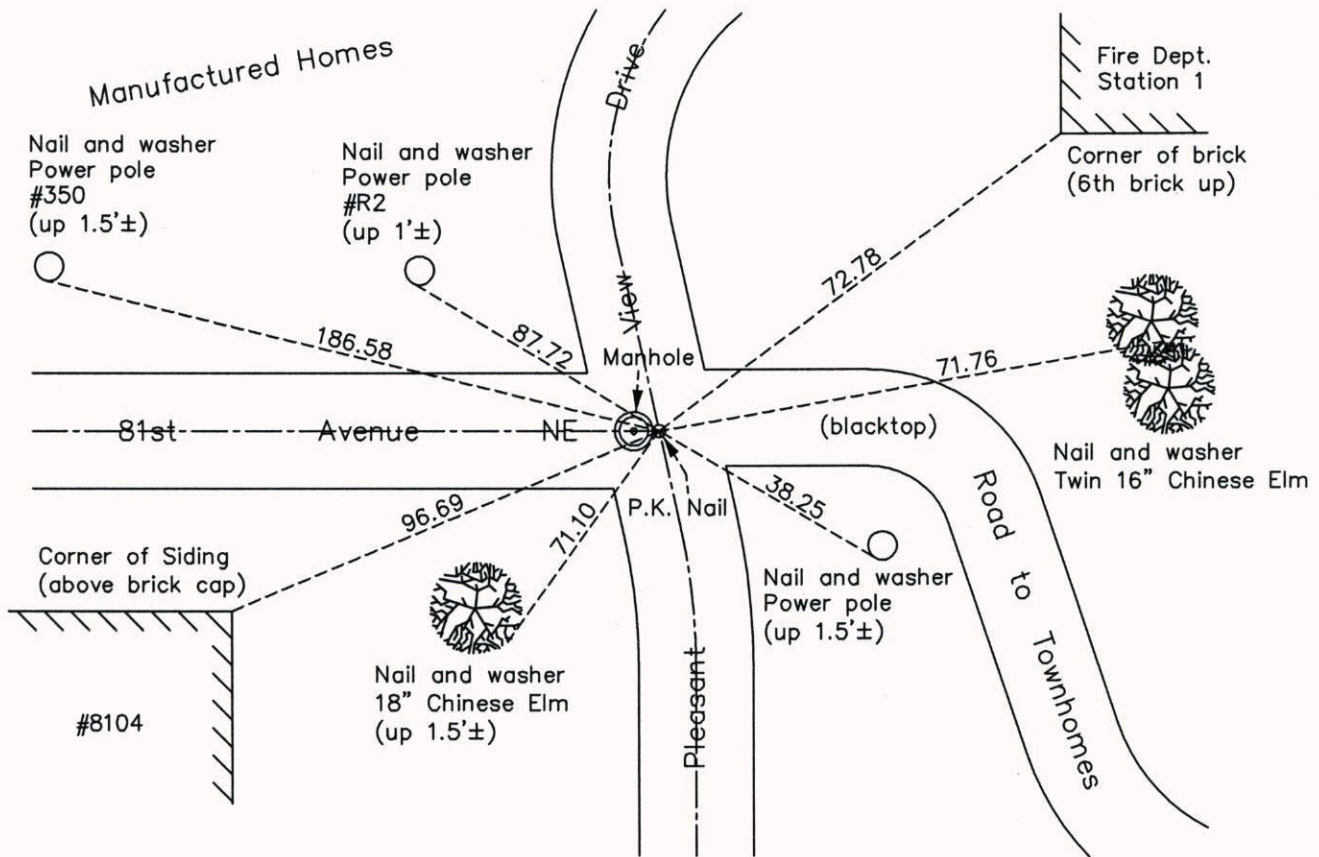
## East 1/4 Corner of Sec. 1 Township 30 Range 24

On the 13th day of September, 1966, the described corner was evidenced by area resurvey

and to perpetuate the location of said corner, at the exact location thereof, a permanent marker was placed consisting of a P.K. nail

AND on the 13th day of November, 2014, said permanent marker was found on east edge of manhole rim and on c/l-c/l of Pleasant View Drive and 81st Avenue. The ties were updated.

Updated reference ties are as shown below.



N  
W ANOKA COUNTY SURVEYOR E  
S

Revision Date  
3/16/15

N.A.D. 1983 Coordinates  
(1996 Adjustment)

County Project Coordinates	
Northing	129054.3385
Easting	510030.4091
Date	11/18/03

I hereby certify that this United States public land survey monument record is correct and complete to the best of my knowledge and belief.

*Larry D. Hoium* Date 3/16/15

Larry D. Hoium, Anoka County Surveyor  
Minnesota License Number 18165