

CERTIFICATE OF LOCATION OF GOVERNMENT CORNER

County of Anoka

State of Minnesota

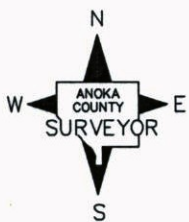
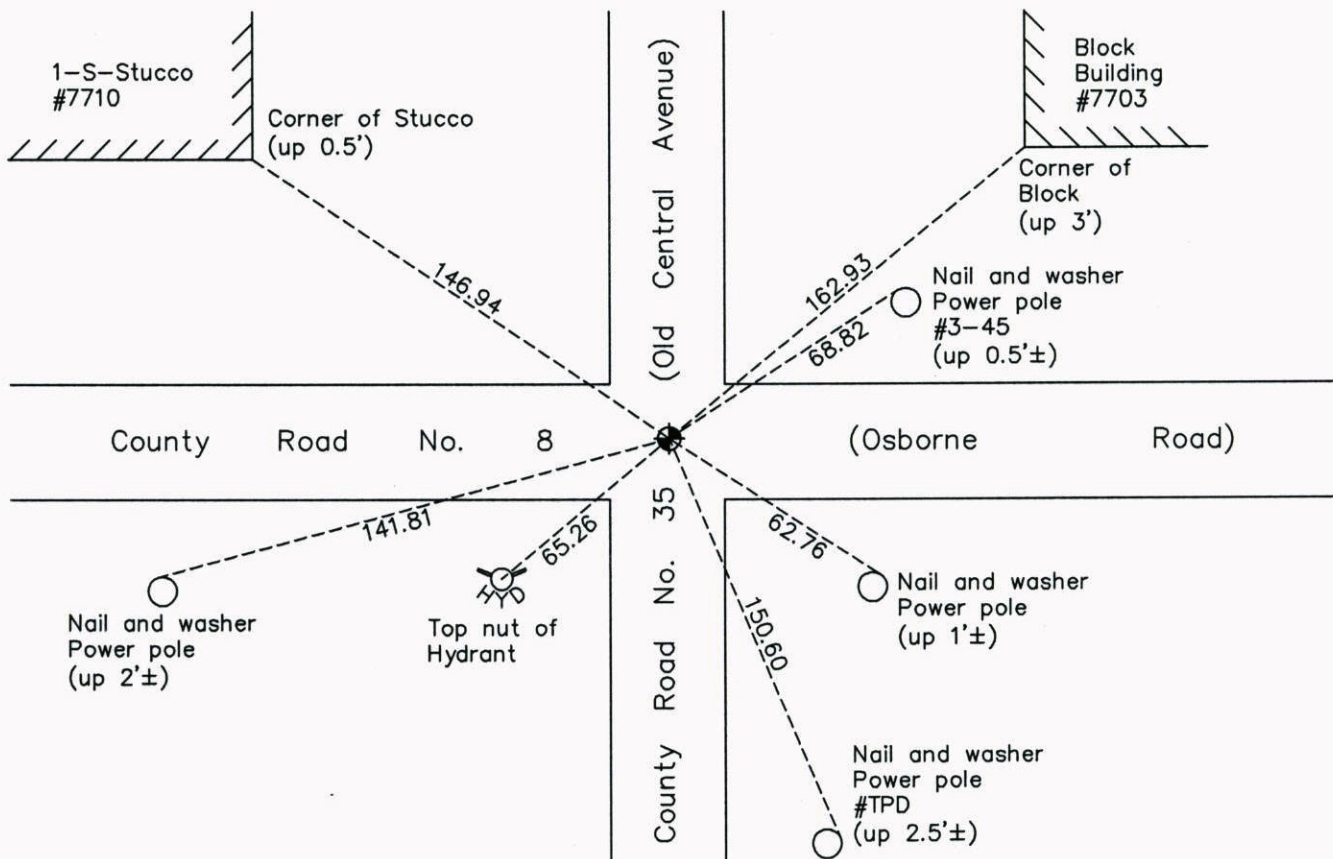
North 1/4 Corner of Sec. 12 Township 30 Range 24

On the 12th day of September, 1960, the described corner was evidenced by a 1/2" iron pipe

and to perpetuate the location of said corner, at the exact location thereof, a permanent marker was placed consisting of a cast iron monument

AND on the 13th day of November, 2014, said permanent marker was found and the ties were updated

Updated reference ties are as shown below.



Revision Date
3/17/15

N.A.D. 1983 Coordinates
(1996 Adjustment)

County Project Coordinates	
Northing	126420.6846
Easting	507366.8447
Date	8/13/03

I hereby certify that this United States public land survey monument record is correct and complete to the best of my knowledge and belief.

Larry D. Hoium Date 3/17/15

Larry D. Hoium, Anoka County Surveyor

Minnesota License Number 18165