

CERTIFICATE OF LOCATION OF GOVERNMENT CORNER

County of Anoka

State of Minnesota

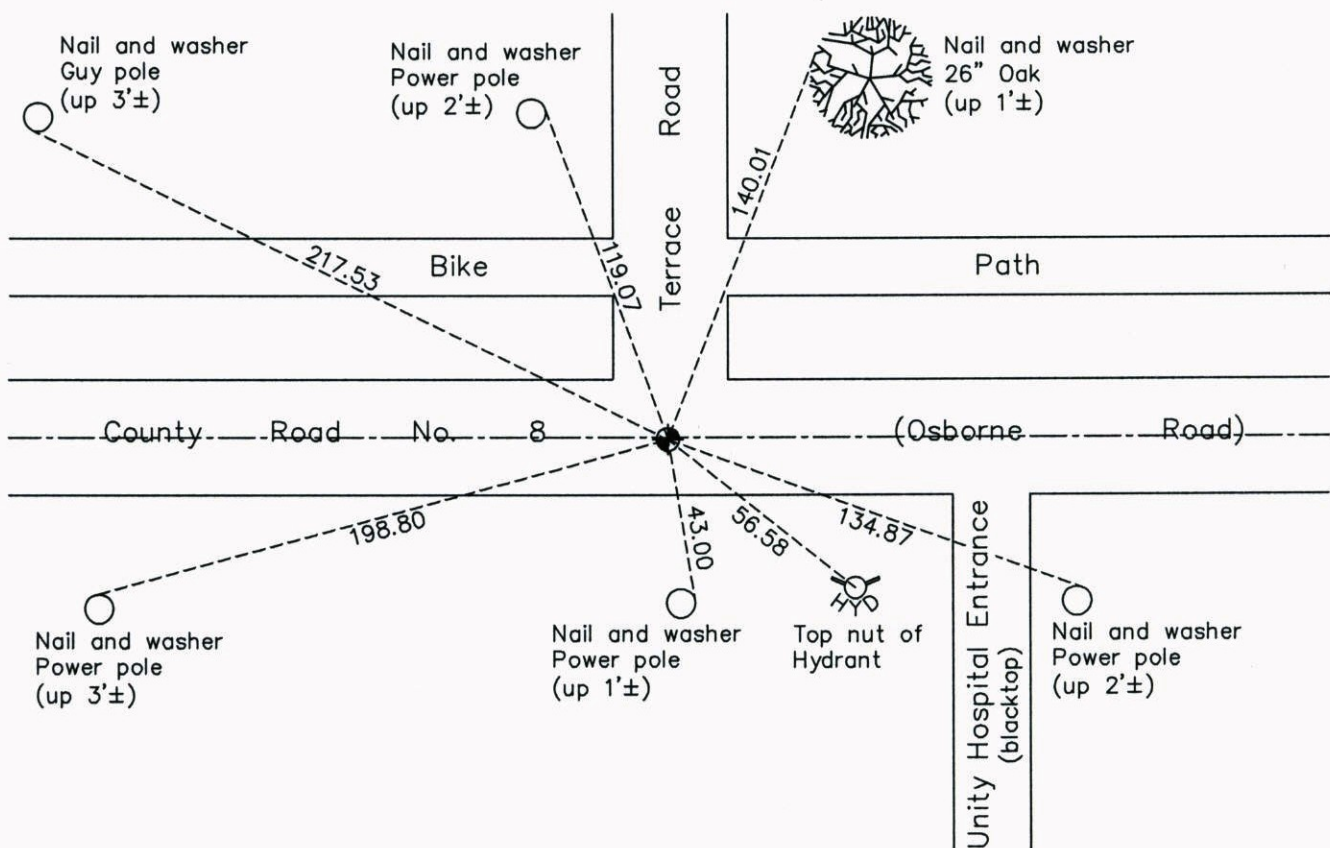
South 1/4 Corner of Sec. 2 Township 30 Range 24

On the 6th day of July, 1966, the described corner was evidenced by a concrete monument

and to perpetuate the location of said corner, at the exact location thereof, a permanent marker was placed consisting of a cast iron monument

AND on the 14th day of November, 2014, said permanent marker was found and the ties were updated

Updated reference ties are as shown below.



Revision Date
3/18/15

N.A.D. 1983 Coordinates
(1996 Adjustment)

County Project Coordinates	
Northing	<u>126491.1512</u>
Easting	<u>502084.5599</u>
Date	<u>8/13/03</u>

I hereby certify that this United States public land survey monument record is correct and complete to the best of my knowledge and belief.

Larry D. Hoium Date 3/18/15

Larry D. Hoium, Anoka County Surveyor

Minnesota License Number 18165