

# CERTIFICATE OF LOCATION OF GOVERNMENT CORNER

County of Anoka

State of Minnesota

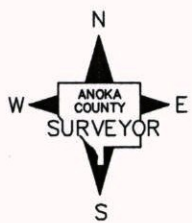
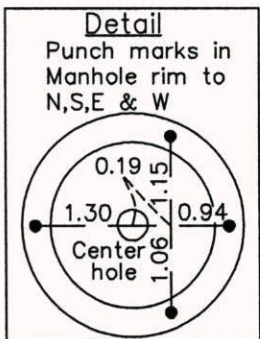
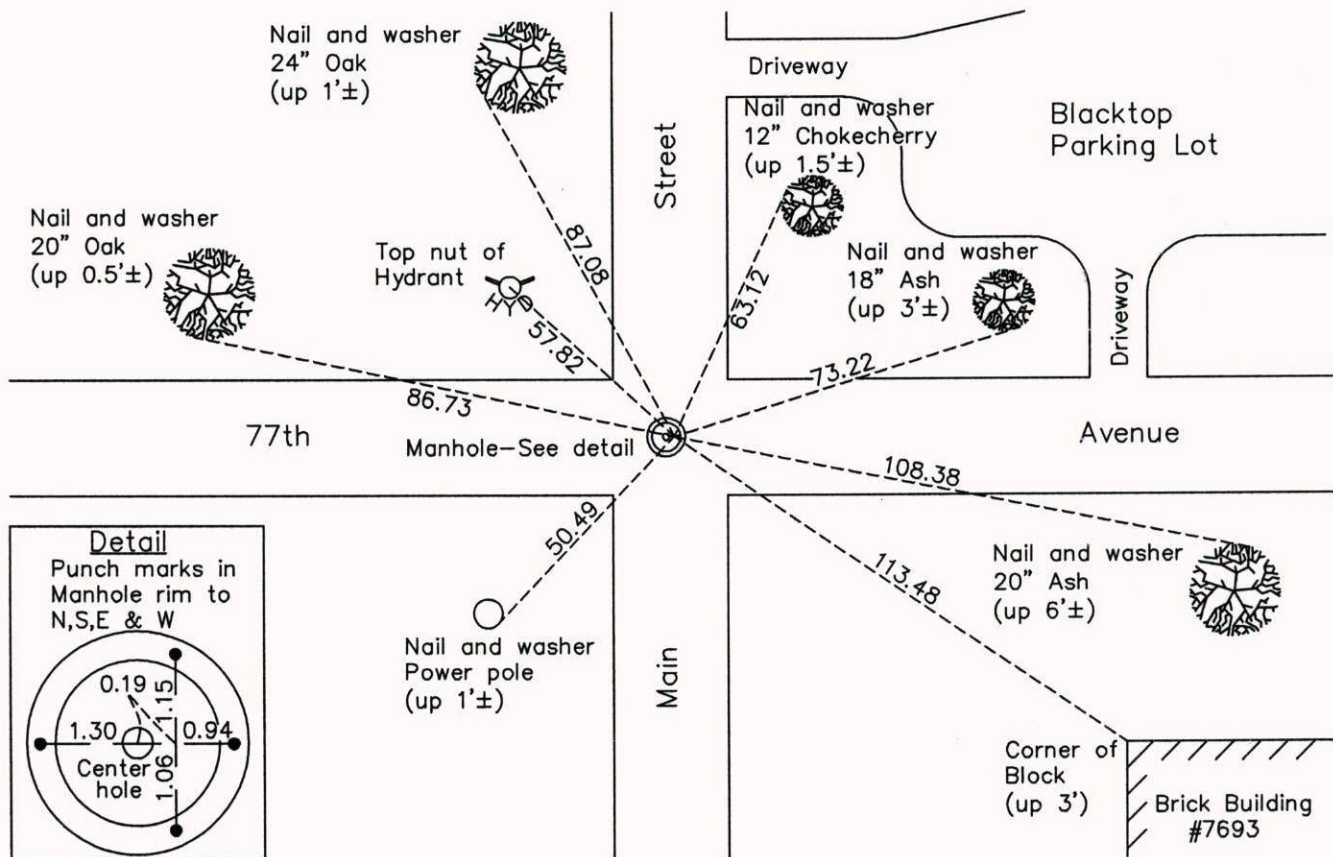
## Northeast Corner of Sec. 10 Township 30 Range 24

On the 21st day of March, 1974, the described corner was evidenced by ties from Comstock and Davis

and to perpetuate the location of said corner, at the exact location thereof, a permanent marker was placed consisting of a position on a manhole with punch marks in rim to the North, South, East and West

AND on the 14th day of November, 2014, said permanent marker was found and the ties were updated

Updated reference ties are as shown below.



Revision Date  
3/18/15

N.A.D. 1983 Coordinates  
(1996 Adjustment)

County Project Coordinates	
Northing	<u>126467.8722</u>
Easting	<u>499445.3219</u>
Date	<u>8/19/03</u>

I hereby certify that this United States public land survey monument record is correct and complete to the best of my knowledge and belief.

*Larry D. Hoium* Date 3/18/15

Larry D. Hoium, Anoka County Surveyor  
Minnesota License Number 18165