

# CERTIFICATE OF LOCATION OF GOVERNMENT CORNER

County of Anoka

State of Minnesota

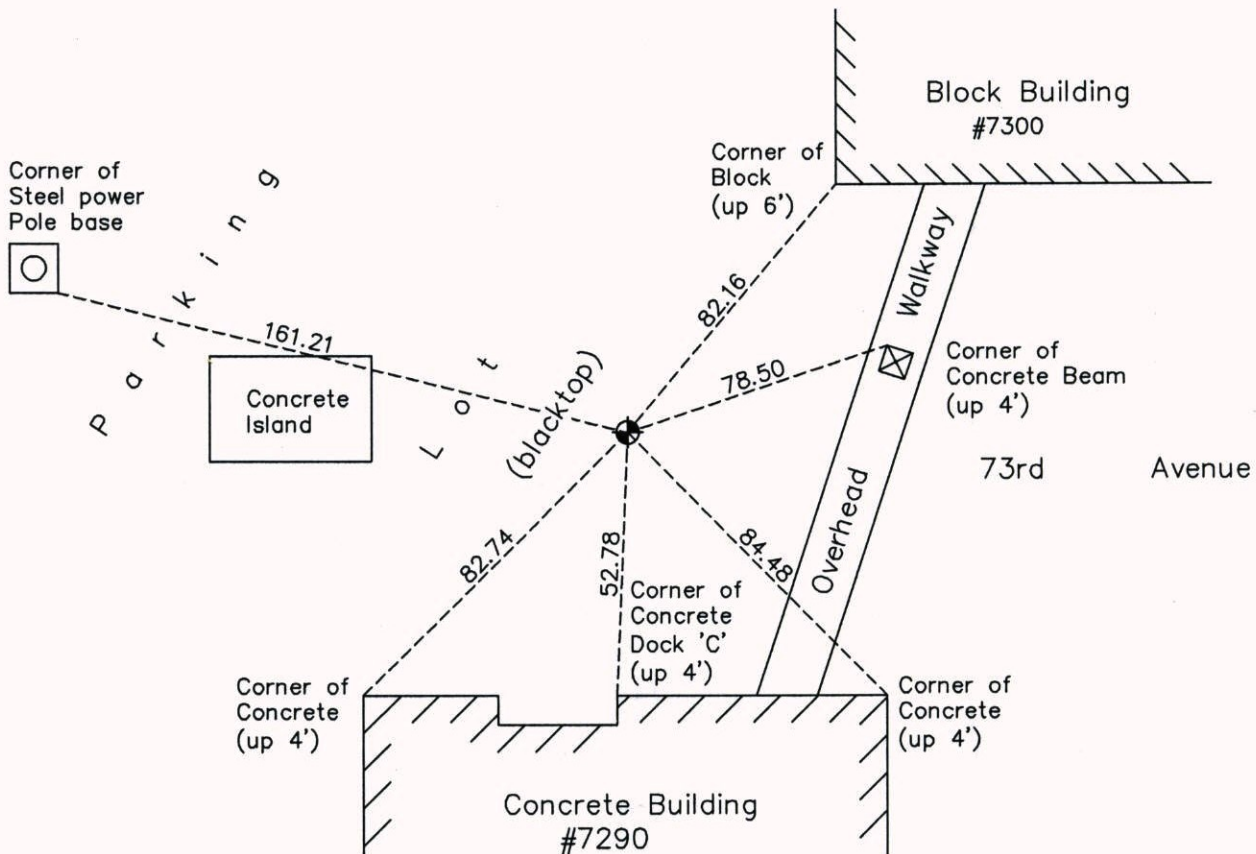
## East 1/4 Corner of Sec. 10 Township 30 Range 24

On the 19th day of August, 1960, the described corner was evidenced by a granite monument

and to perpetuate the location of said corner, at the exact location thereof, a permanent marker was placed consisting of a cast iron monument

AND on the 12th day of November, 2014, said permanent marker was found and the ties were updated

Updated reference ties are as shown below.



Revision Date  
3/18/15

N.A.D. 1983 Coordinates  
(1996 Adjustment)

County Project Coordinates	
Northing	<u>123828.5322</u>
Easting	<u>499516.6884</u>
Date	<u>8/18/03</u>

I hereby certify that this United States public land survey monument record is correct and complete to the best of my knowledge and belief.

*Larry D. Hoium* Date 3/18/15

Larry D. Hoium, Anoka County Surveyor

Minnesota License Number 18165