

CERTIFICATE OF LOCATION OF GOVERNMENT CORNER

County of Anoka

State of Minnesota

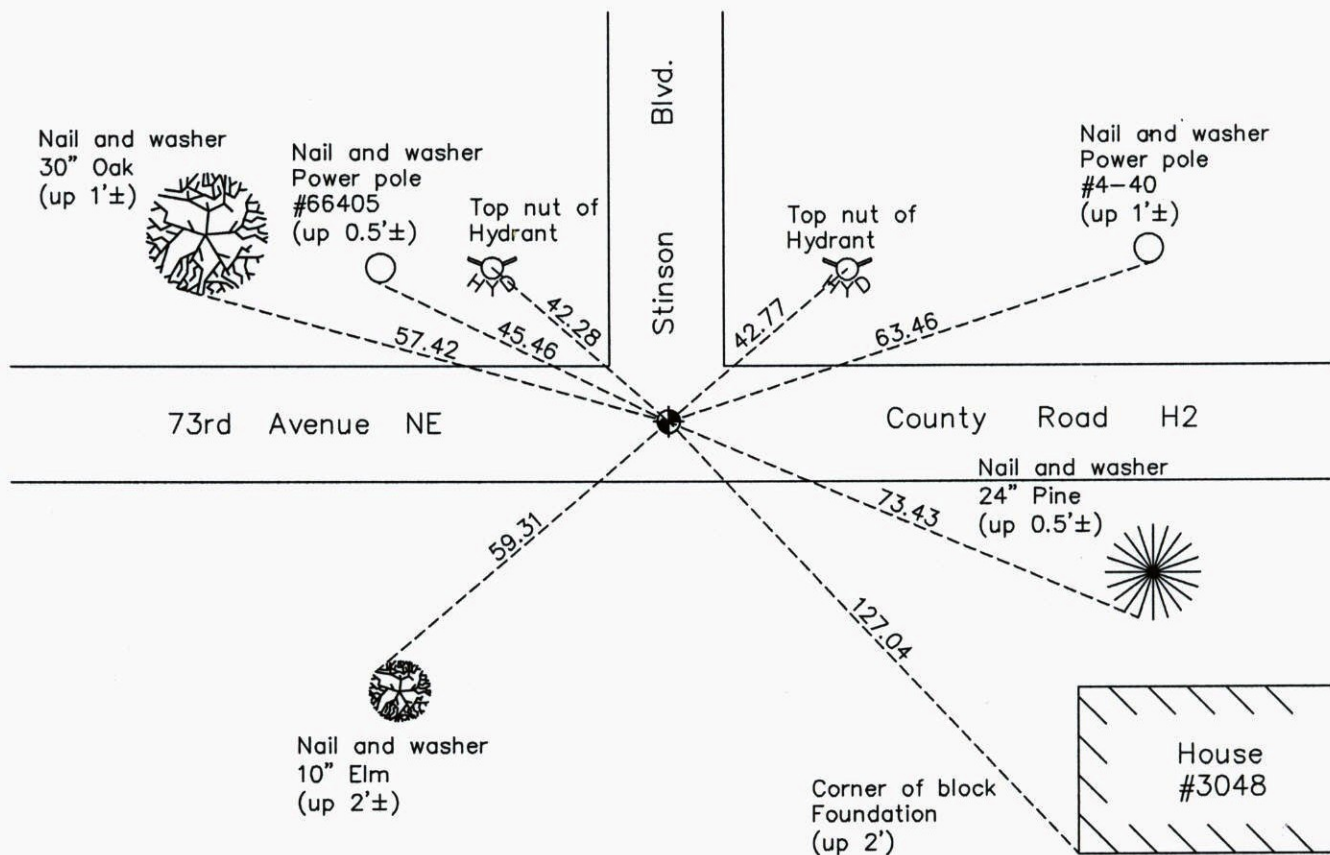
East 1/4 Corner of Sec. 12 Township 30 Range 24

On the 19th day of September, 1961, the described corner was evidenced by an 8" X 8" granite monument

and to perpetuate the location of said corner, at the exact location thereof, a permanent marker was placed consisting of a Ramsey County cast iron monument (under a cover and down 2')

AND on the 12th day of November, 2014, said permanent marker was found and the ties were updated

Updated reference ties are as shown below.



N

ANOKA COUNTY SURVEYOR

S

Revision Date

3/23/15

N.A.D. 1983 Coordinates
(1996 Adjustment)

County Project Coordinates	
Northing	123757.7619
Easting	510046.0694
Date	7/13/04

I hereby certify that this United States public land survey monument record is correct and complete to the best of my knowledge and belief.

Larry D. Hoium Date 3/23/15

Larry D. Hoium, Anoka County Surveyor

Minnesota License Number 18165