

CERTIFICATE OF LOCATION OF GOVERNMENT CORNER

County of Anoka

State of Minnesota

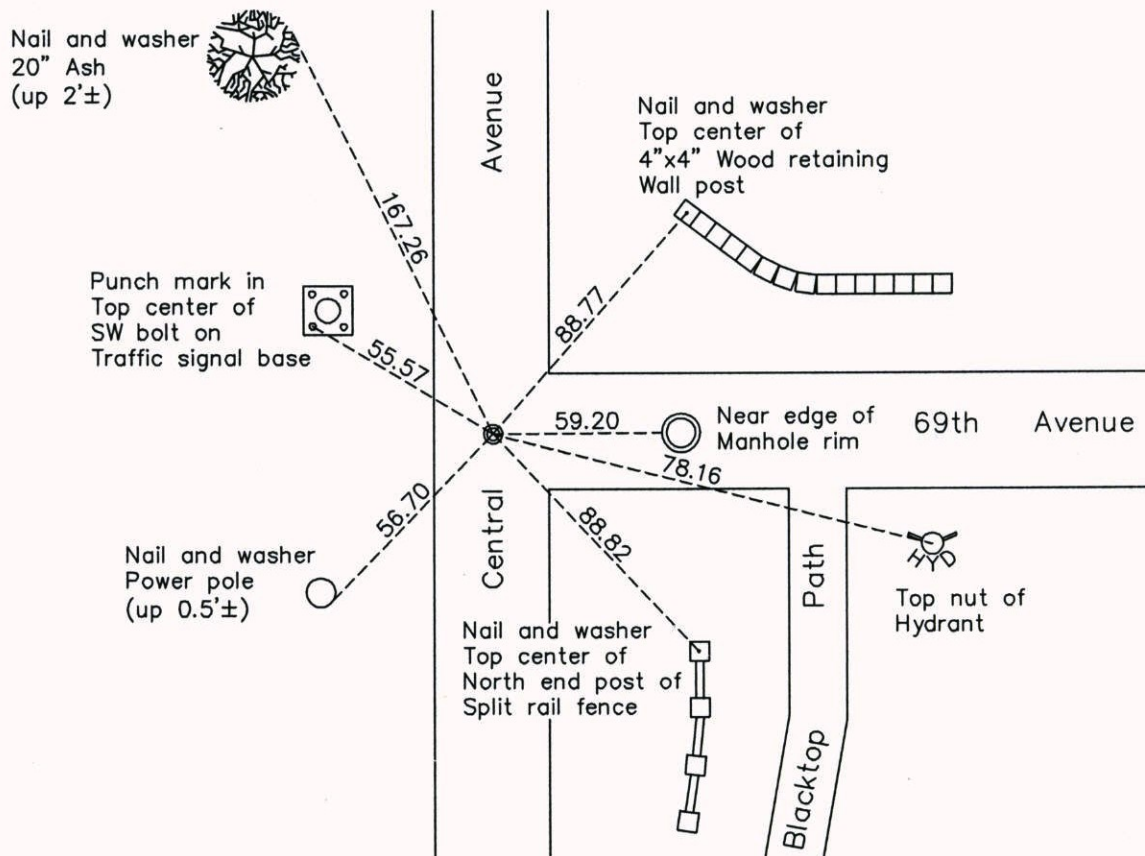
South $\frac{1}{4}$ Corner of Sec. 12 Township 30 Range 24

On the 12th day of September, 1960, the described corner was evidenced by a P.K. nail

and to perpetuate the location of said corner, at the exact location thereof, a permanent marker was placed consisting of a 1/2" iron pipe

AND on the 30th day of October, 2014, said permanent marker was found and the ties
were updated

Updated reference ties are as shown below.



Revision Date
3/23/15

N.A.D. 1983 Coordinates
(1996 Adjustment)

County Project Coordinates	
Northing	<u>121148.8497</u>
Easting	<u>507420.8701</u>
Date	<u>7/22/03</u>

I hereby certify that this United States public land survey monument record is correct and complete to the best of my knowledge and belief.

Larry D. Hoium Date 3/23/15

Larry D. Hoium, Anoka County Surveyor
Minnesota License Number 18165