

# CERTIFICATE OF LOCATION OF GOVERNMENT CORNER

County of Anoka

State of Minnesota

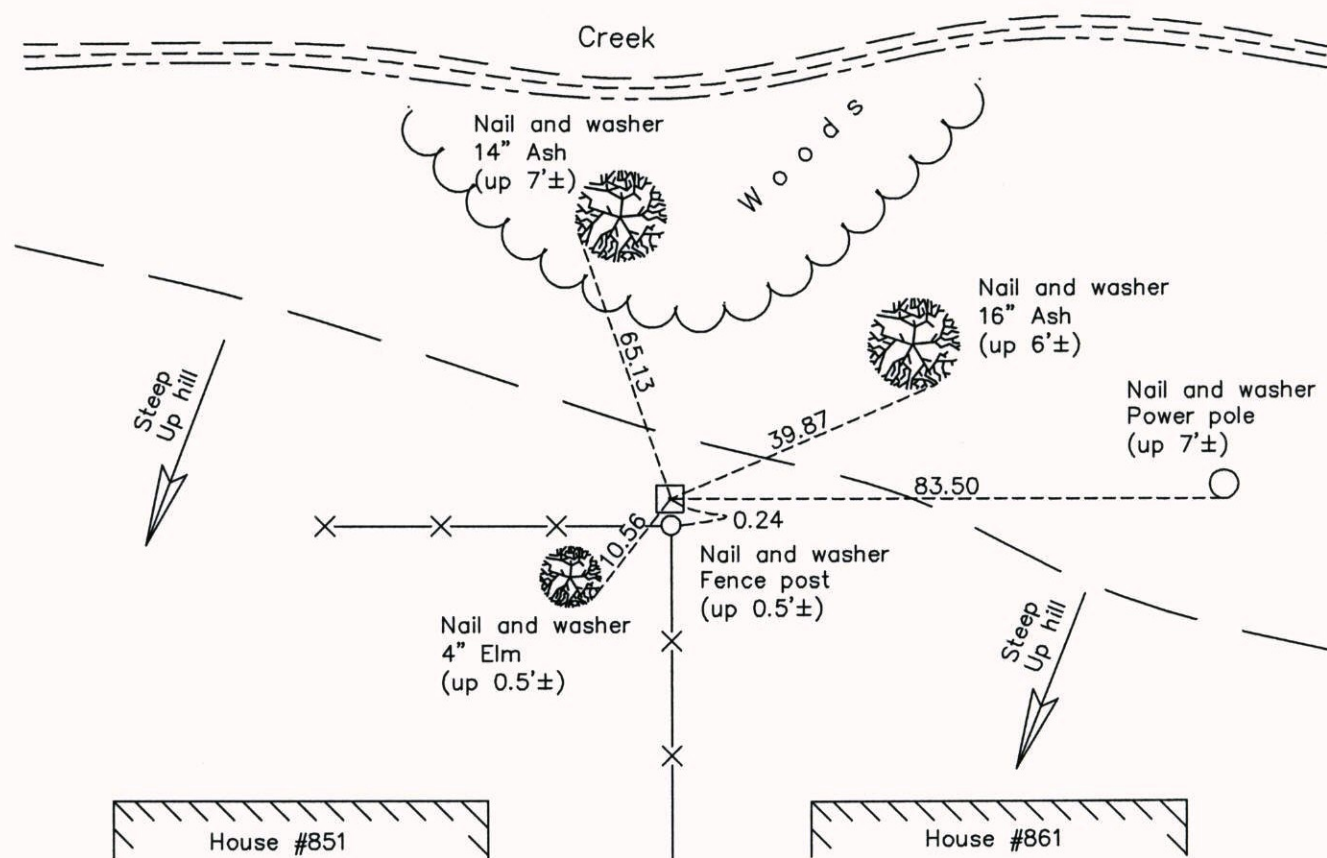
## Northwest Corner of Sec. 13 Township 30 Range 24

On the 10th day of February, 1960, the described corner was evidenced by a granite monument

and to perpetuate the location of said corner, at the exact location thereof, a permanent marker was placed consisting of the same granite monument with a sign on the corner fence post

AND on the 7th day of November, 2014, said permanent marker was found down 0.5'± and the ties were updated

Updated reference ties are as shown below.



Revision Date  
3/23/15

N.A.D. 1983 Coordinates  
(1996 Adjustment)

County Project Coordinates	
Northing	<u>121188.8420</u>
Easting	<u>504704.8253</u>
Date	<u>11/20/08</u>

I hereby certify that this United States public land survey monument record is correct and complete to the best of my knowledge and belief.

*Larry D. Hoium* Date 3/23/15

Larry D. Hoium, Anoka County Surveyor

Minnesota License Number 18165