

CERTIFICATE OF LOCATION OF GOVERNMENT CORNER

County of Anoka

State of Minnesota

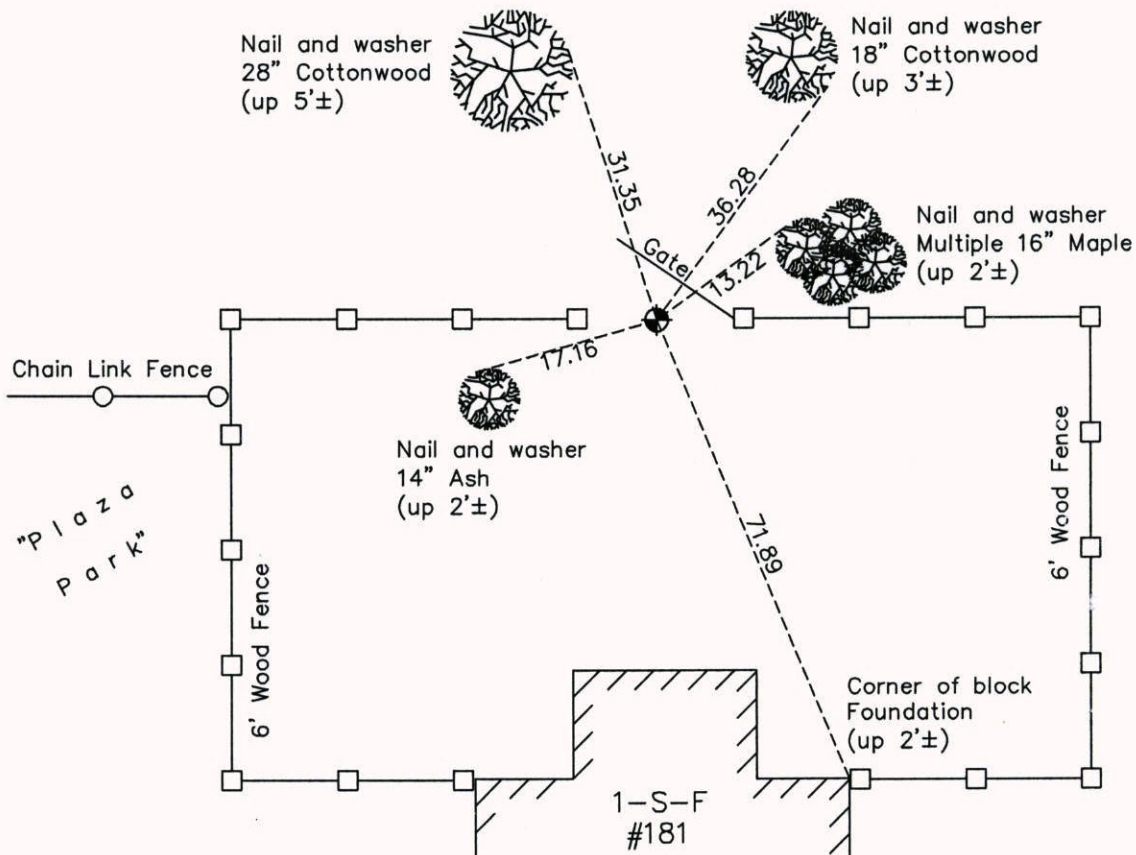
Southwest Corner of Sec. 11 Township 30 Range 24

On the 11th day of May, 1964, the described corner was evidenced by a granite monument

and to perpetuate the location of said corner, at the exact location thereof, a permanent marker was placed consisting of a cast iron monument

AND on the 3rd day of November, 2014, said permanent marker was found and the ties were updated

Updated reference ties are as shown below.



Revision Date
3/24/15

N.A.D. 1983 Coordinates
(1996 Adjustment)

County Project Coordinates	
Northing	121189.5814
Easting	499555.3289
Date	12/28/04

I hereby certify that this United States public land survey monument record is correct and complete to the best of my knowledge and belief.

Larry D. Hoium Date 3/24/15

Larry D. Hoium, Anoka County Surveyor

Minnesota License Number 18165