

# CERTIFICATE OF LOCATION OF GOVERNMENT CORNER

County of Anoka

State of Minnesota

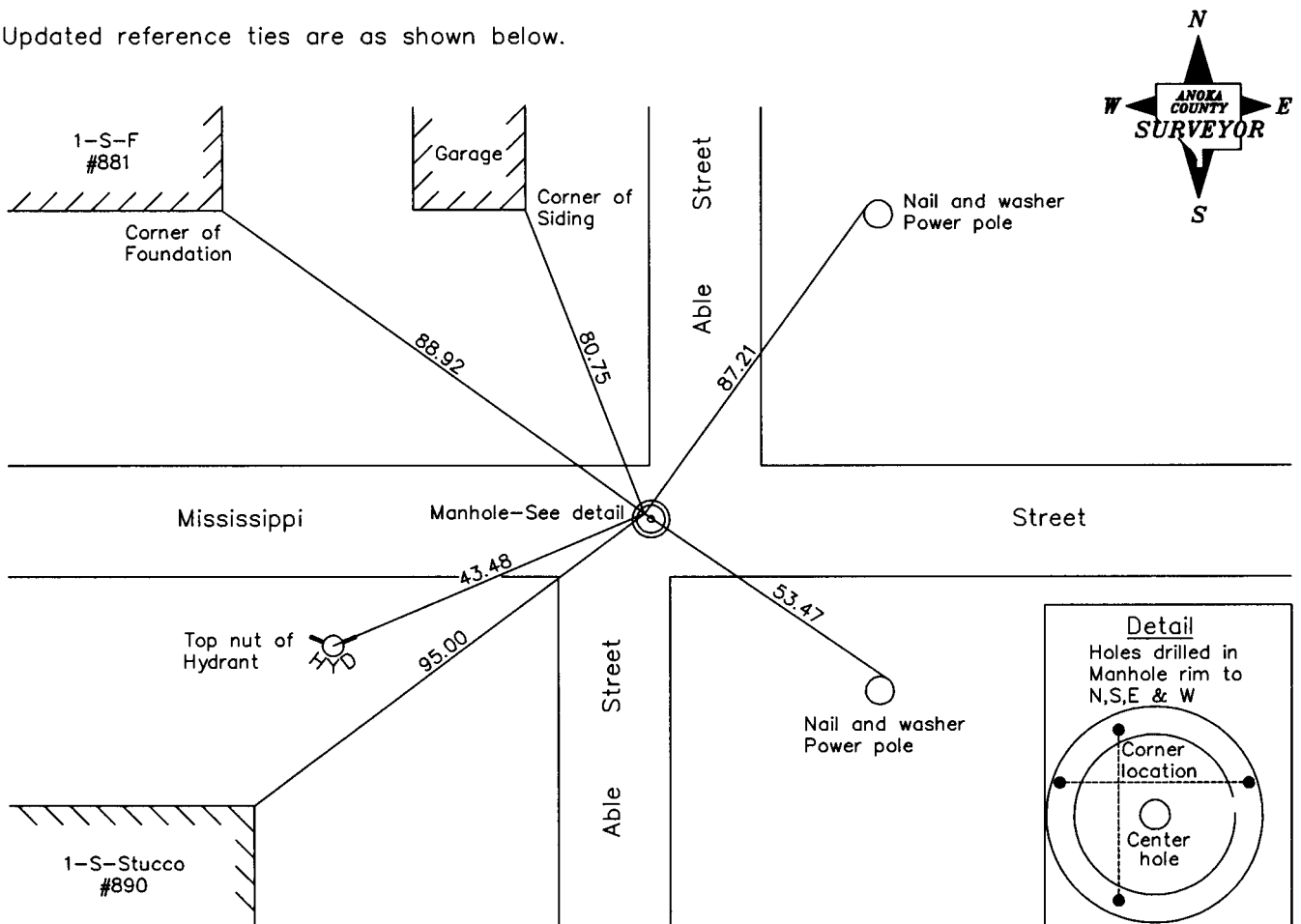
East 1/4 Corner of Sec. 14 Township 30 Range 24

On the 4th day of September, 1943, the described corner was evidenced by a concrete monument

and to perpetuate the location of said corner, at the exact location thereof, a permanent marker was placed consisting of a position on a manhole cover with holes drilled in rim of manhole to the North, South, East and West

AND on the 4th day of September, 2008, said permanent marker was found and the ties were updated

Updated reference ties are as shown below.



Revised date
7/19/89
7/28/94
9/04/08

N.A.D. 1983 Coordinates (1996 Adjustment)	
County Project Coordinates	
Northing	<u>118529.0067</u>
Easting	<u>504818.6969</u>
Date	<u>7/15/04</u>

I hereby certify that this United States public land survey monument record is correct and complete to the best of my knowledge and belief.

*Larry D. Hoium* Date 11/07/08

Larry D. Hoium, Anoka County Surveyor

Minnesota License Number 18165