

CERTIFICATE OF LOCATION OF GOVERNMENT CORNER

County of Anoka

State of Minnesota

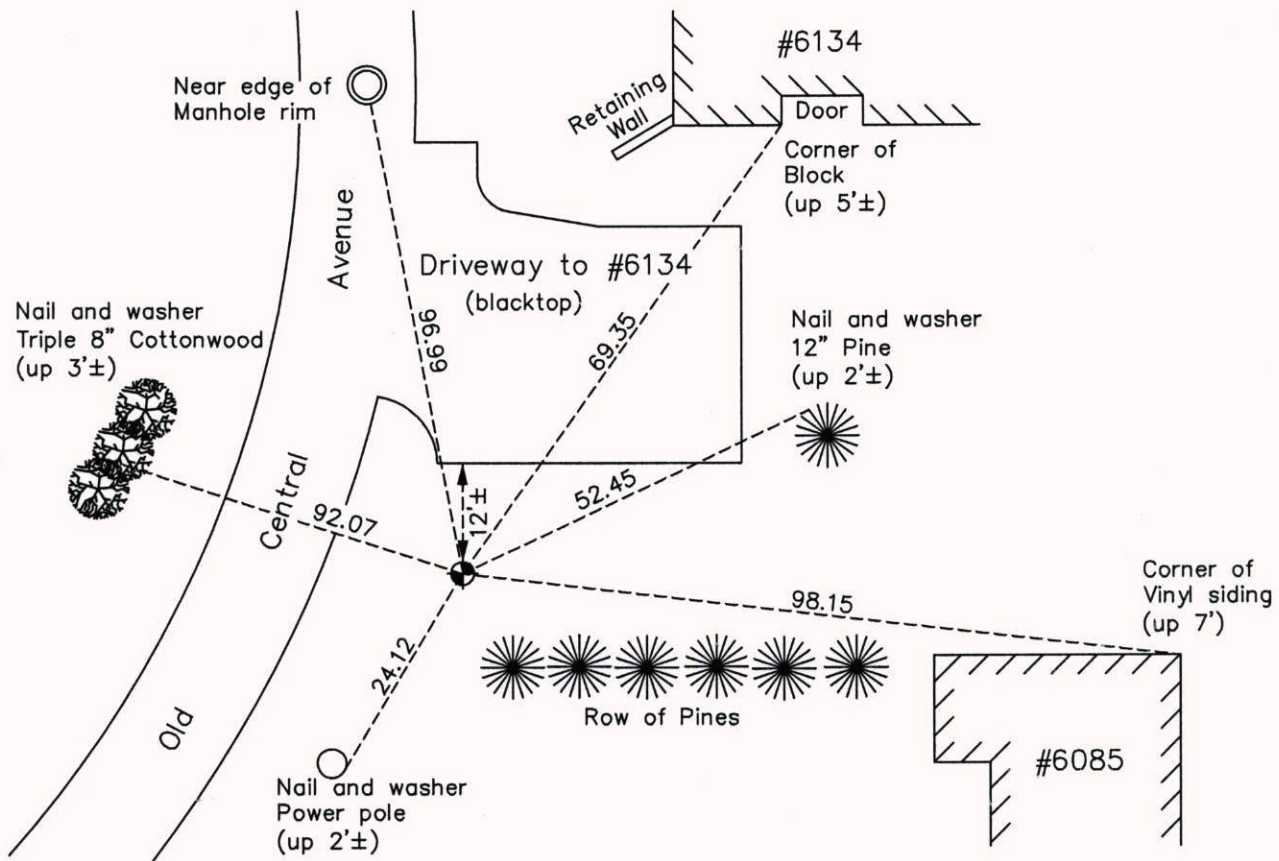
South 1/4 Corner of Sec. 13 Township 30 Range 24

On the 15th day of May, 1964, the described corner was evidenced by a concrete monument

and to perpetuate the location of said corner, at the exact location thereof, a permanent marker was placed consisting of a cast iron monument

AND on the 31st day of March, 2015, said permanent marker was found down 0.5'± and broken. Replaced with new cast iron monument and updated ties.

Updated reference ties are as shown below.



N.A.D. 1983 Coordinates
(1996 Adjustment)

County Project Coordinates

Northing 115859.9831

Easting 507494.9485

Date 1/05/05

Revision Date

4/06/15

I hereby certify that this United States public land survey monument record is correct and complete to the best of my knowledge and belief.

Larry D. Hoium Date 4/06/15

Larry D. Hoium, Anoka County Surveyor

Minnesota License Number 18165