

CERTIFICATE OF LOCATION OF GOVERNMENT CORNER

County of Anoka

State of Minnesota

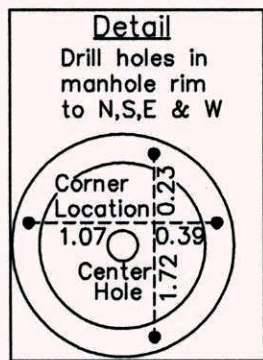
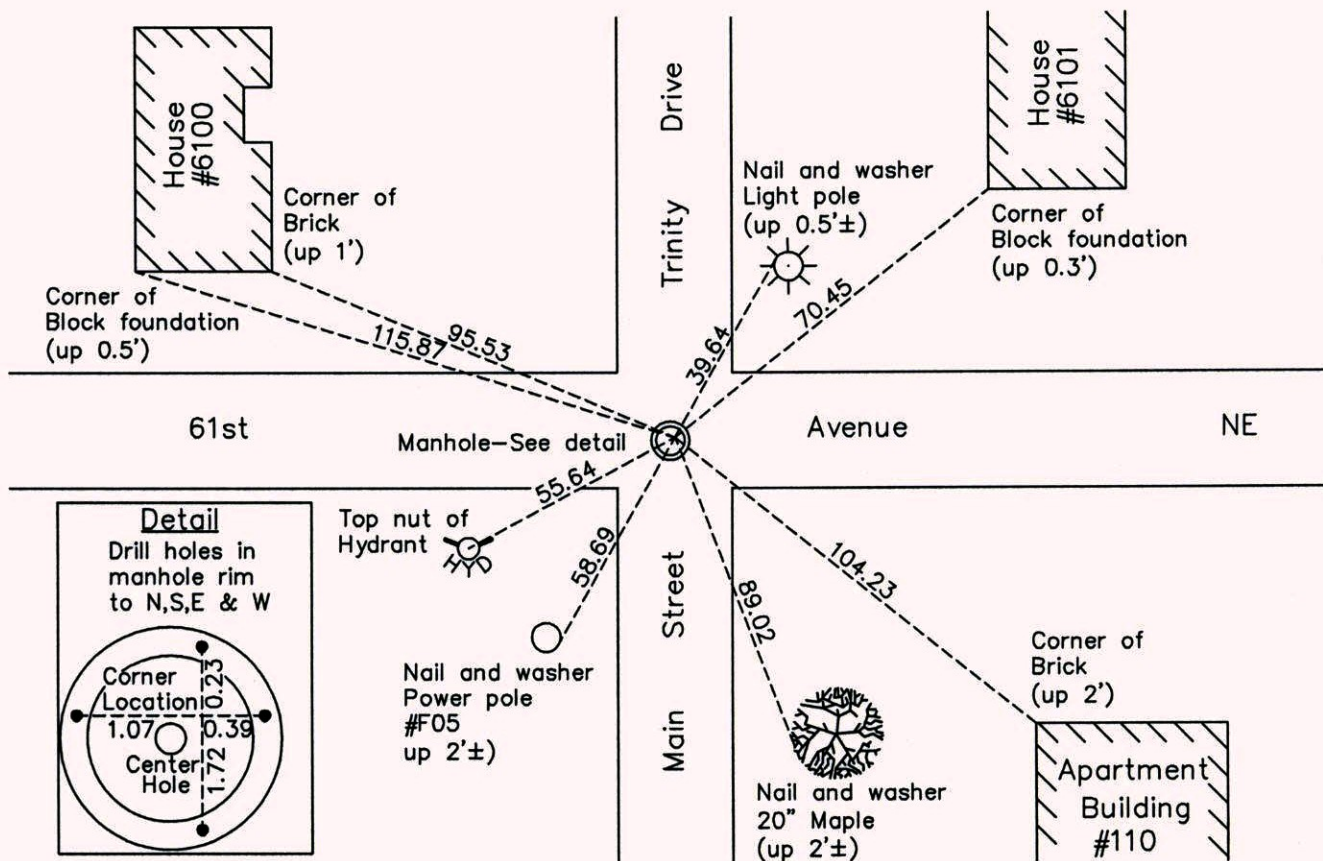
Northwest Corner of Sec. 23 Township 30 Range 24

On the 16th day of June, 1943, the described corner was evidenced by a concrete monument

and to perpetuate the location of said corner, at the exact location thereof, a permanent marker was placed consisting of a position on a manhole cover with notches in rim of manhole to the North, South, East and West

AND on the 27th day of March, 2015, said permanent marker was reset with drill holes in in rim of manhole to North, South, East and West. P.K. nails set 1.00' North and East of position.

Updated reference ties are as shown below.



N
W ANOKA COUNTY SURVEYOR E
S

Revision Date 4/13/15

N.A.D. 1983 Coordinates
(1996 Adjustment)

County Project Coordinates	
Northing	115930.5522
Easting	499550.5192
Date	7/15/04

I hereby certify that this United States public land survey monument record is correct and complete to the best of my knowledge and belief.

Larry D. Hoium Date 4/13/15

Larry D. Hoium, Anoka County Surveyor
Minnesota License Number 18165