

CERTIFICATE OF LOCATION OF GOVERNMENT CORNER

County of Anoka

State of Minnesota

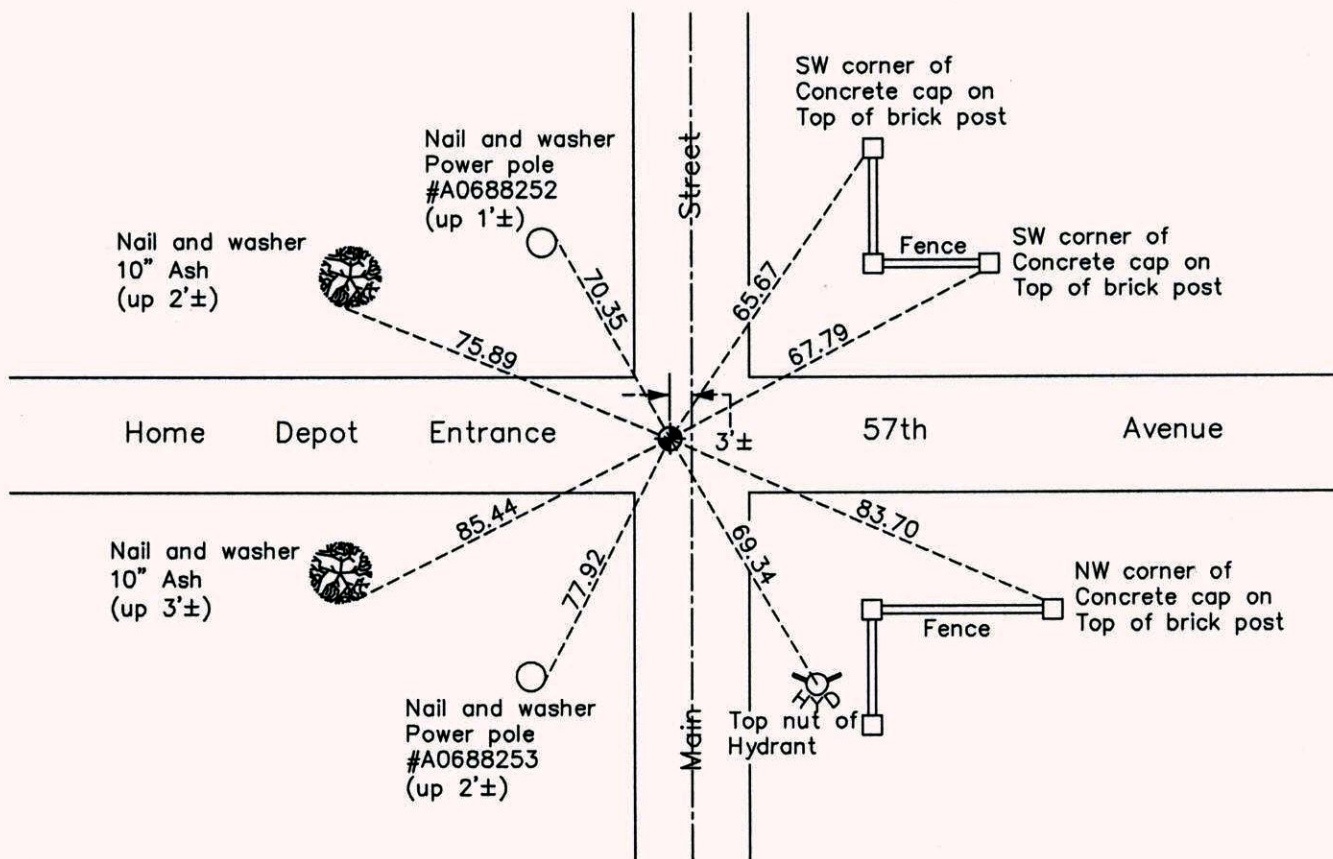
West 1/4 Corner of Sec. 23 Township 30 Range 24

On the 9th day of September, 1960, the described corner was evidenced by a concrete monument

and to perpetuate the location of said corner, at the exact location thereof, a permanent marker was placed consisting of a cast iron monument

AND on the 27th day of October, 2014, said permanent marker was found and the ties were updated

Updated reference ties are as shown below.



Revision Date
3/27/15

N.A.D. 1983 Coordinates
(1996 Adjustment)

| County Project Coordinates | |
|----------------------------|-------------|
| Northing | 113245.9538 |
| Easting | 499603.4772 |
| Date | 7/19/04 |

I hereby certify that this United States public land survey monument record is correct and complete to the best of my knowledge and belief.

Larry D. Hoium Date 3/27/15

Larry D. Hoium, Anoka County Surveyor

Minnesota License Number 18165