

# CERTIFICATE OF LOCATION OF GOVERNMENT CORNER

County of Anoka

State of Minnesota

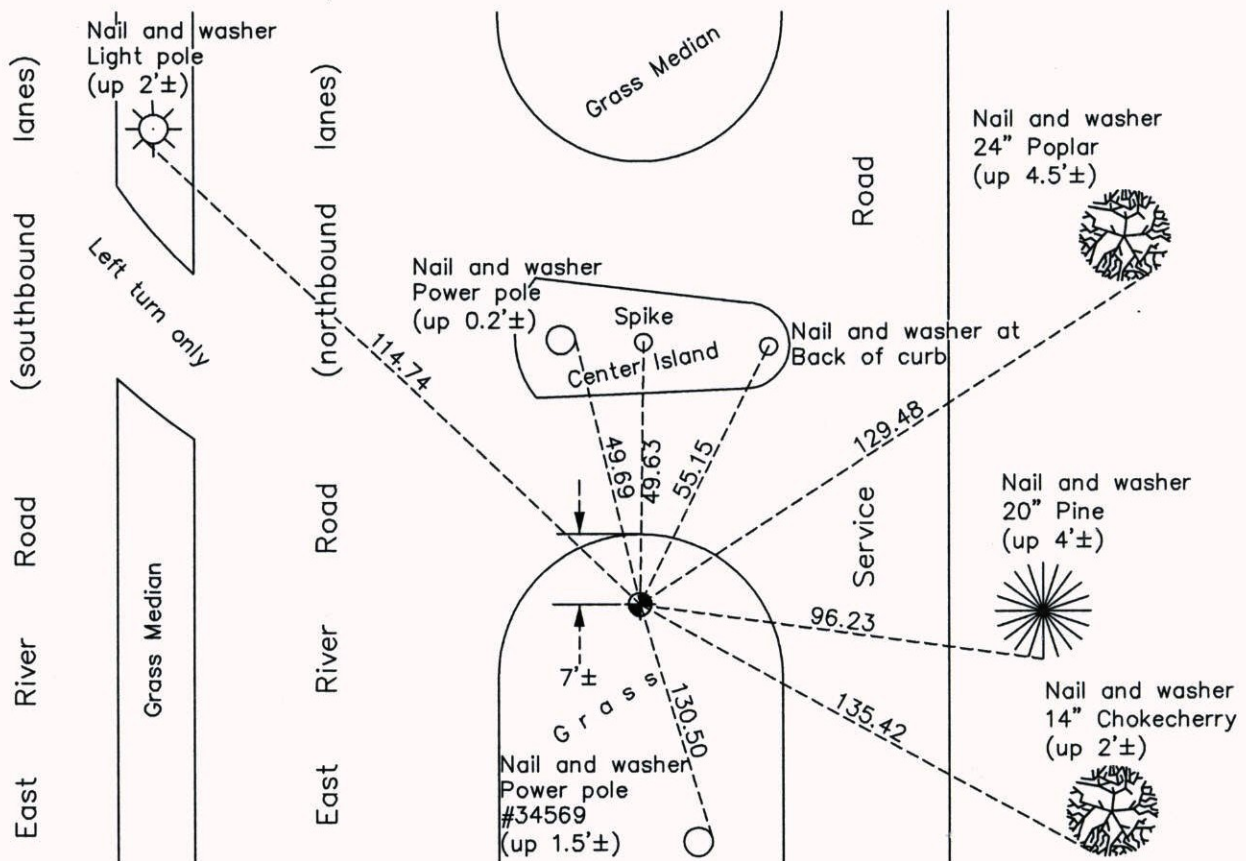
Judicial Corner of Sec. 27 Township 30 Range 24  
(on north line of section)

On the 22nd day of October, 1964, the described corner was evidenced by a 6" brass cap

and to perpetuate the location of said corner, at the exact location thereof, a permanent marker was placed consisting of a cast iron monument

AND on the 27th day of October, 2014, said permanent marker was found down 0.5'± and the ties were updated

Updated reference ties are as shown below.



N  
W ANOKA COUNTY SURVEYOR E  
S

Revision Date  
3/30/15

N.A.D. 1983 Coordinates  
(1996 Adjustment)

County Project Coordinates	
Northing	110687.8060
Easting	496464.4372
Date	6/08/04

I hereby certify that this United States public land survey monument record is correct and complete to the best of my knowledge and belief.

*Larry D. Hoium* Date 3/30/15

Larry D. Hoium, Anoka County Surveyor  
Minnesota License Number 18165