

# CERTIFICATE OF LOCATION OF GOVERNMENT CORNER

County of Anoka

State of Minnesota

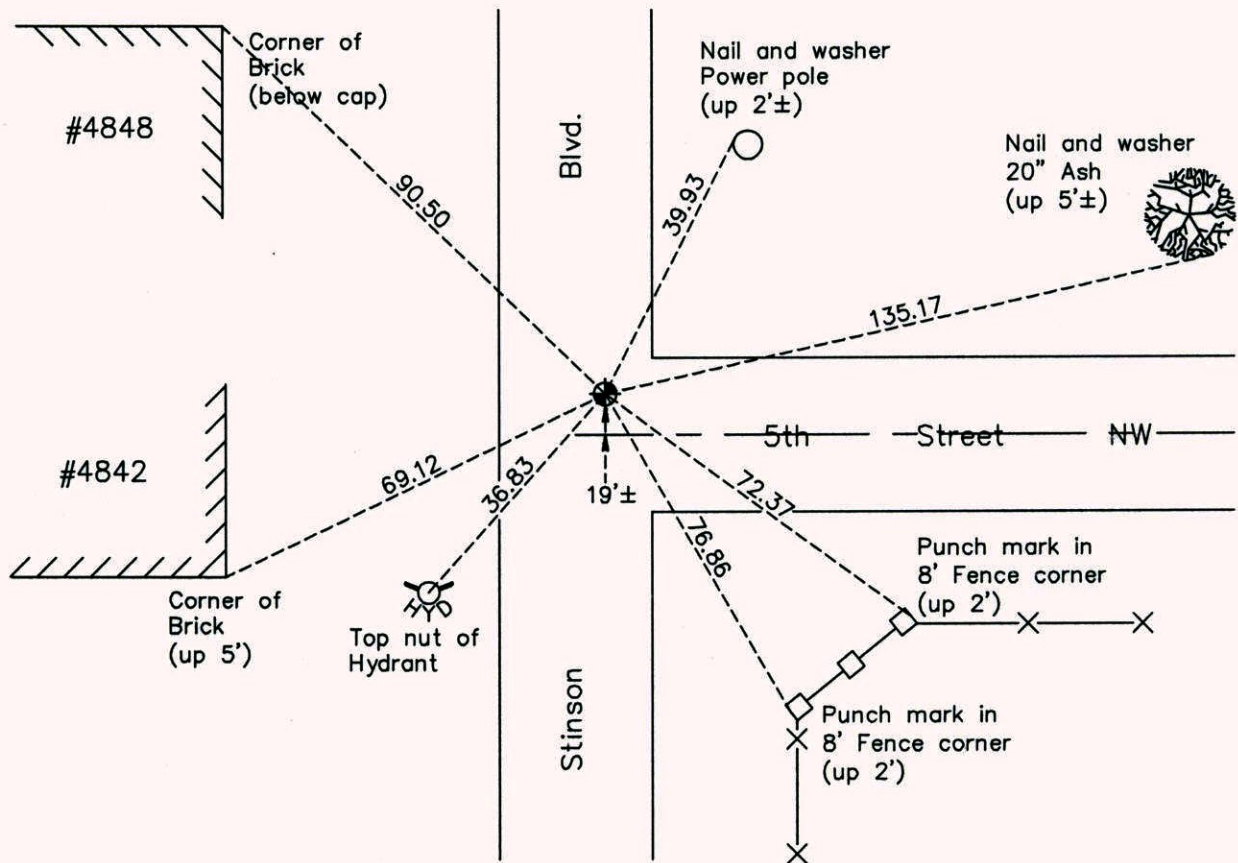
## East 1/4 Corner of Sec. 25 Township 30 Range 24

On the 26th day of August, 1967, the described corner was evidenced by a spike

and to perpetuate the location of said corner, at the exact location thereof, a permanent marker was placed consisting of a cast iron monument

AND on the 14th day of August, 2014, said permanent marker was replaced with a new cast iron monument after road construction and the ties were updated

Updated reference ties are as shown below.



Revision Date  
4/06/15

N.A.D. 1983 Coordinates  
(1996 Adjustment)

County Project Coordinates	
Northing	107967.4674
Easting	510229.9292
Date	5/05/03

I hereby certify that this United States public land survey monument record is correct and complete to the best of my knowledge and belief.

*Larry D. Hoium* Date 4/06/15

Larry D. Hoium, Anoka County Surveyor  
Minnesota License Number 18165