

CERTIFICATE OF LOCATION OF GOVERNMENT CORNER

County of Anoka

State of Minnesota

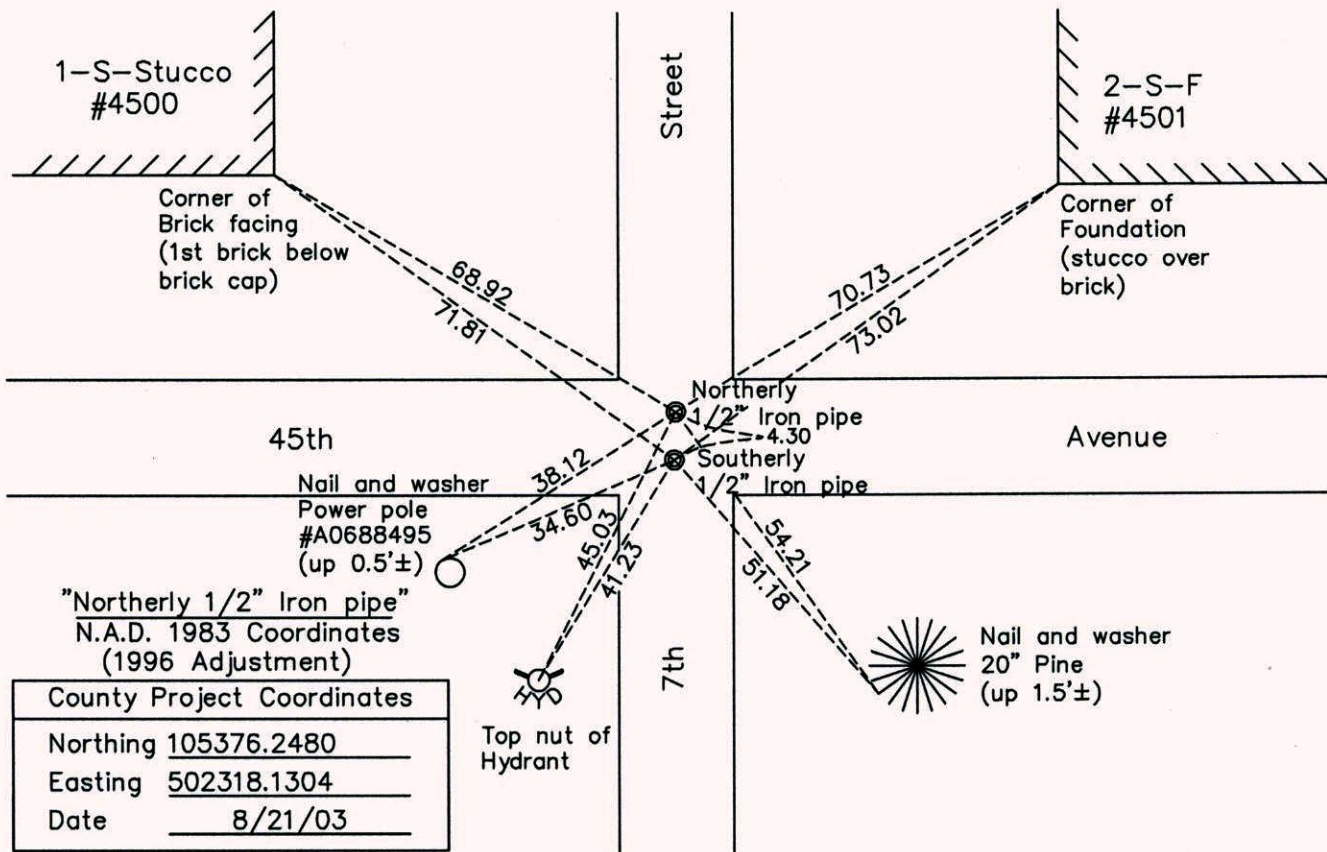
North 1/4 Corner of Sec. 35 Township 30 Range 24

On the 22nd day of May, 1961, the described corner was evidenced by a spike

and to perpetuate the location of said corner, at the exact location thereof, a permanent marker was placed consisting of two 1/2" iron pipes. The north iron has been used for surveys to the North and the south iron has been used for surveys to the South.

AND on the 23rd day of October, 2014, said permanent marker was found missing. Replaced North and South positions with new 1/2" iron pipes and updated ties on April 1, 2015.

Updated reference ties are as shown below.



"Northerly 1/2" Iron pipe"
N.A.D. 1983 Coordinates
(1996 Adjustment)

County Project Coordinates	
Northing	<u>105376.2480</u>
Easting	<u>502318.1304</u>
Date	<u>8/21/03</u>

"Southerly 1/2" Iron pipe"
N.A.D. 1983 Coordinates
(1996 Adjustment)

County Project Coordinates	
Northing	<u>105371.9570</u>
Easting	<u>502318.3027</u>
Date	<u>8/21/03</u>



Revision Date
4/07/15

I hereby certify that this United States public land survey monument record is correct and complete to the best of my knowledge and belief.

Larry D. Hoium Date 4/07/15

Larry D. Hoium, Anoka County Surveyor
Minnesota License Number 18165