

# CERTIFICATE OF LOCATION OF GOVERNMENT CORNER

County of Anoka

State of Minnesota

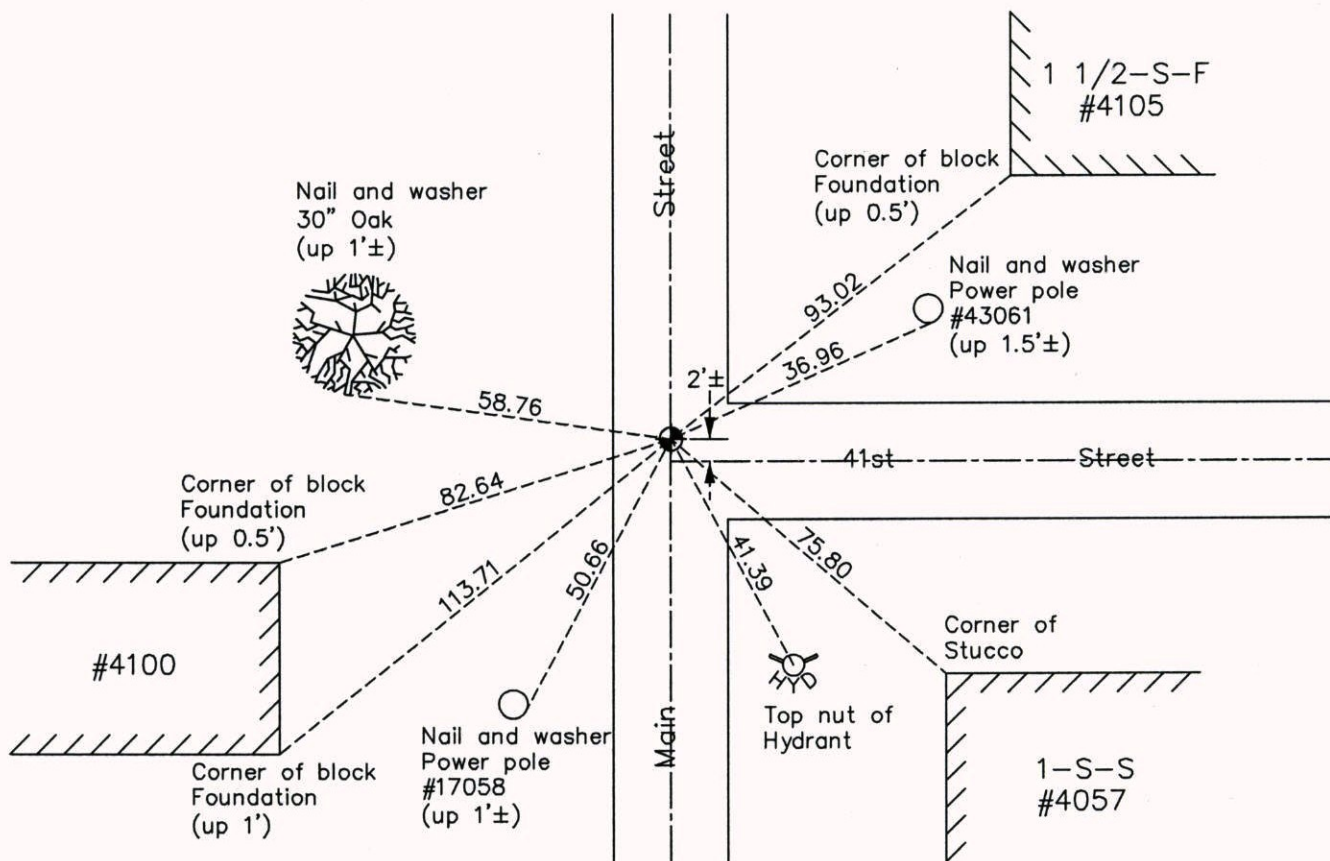
## East 1/4 Corner of Sec. 34 Township 30 Range 24

On the 31st day of July, 1961, the described corner was evidenced by a spike

and to perpetuate the location of said corner, at the exact location thereof, a permanent marker was placed consisting of a cast iron monument

AND on the 22nd day of October, 2014, said permanent marker was found and the ties were updated

Updated reference ties are as shown below.



N.A.D. 1983 Coordinates  
(1996 Adjustment)

County Project Coordinates	
Northing	102731.8536
Easting	499695.3450
Date	8/18/03

Revision Date  
3/31/15

I hereby certify that this United States public land survey monument record is correct and complete to the best of my knowledge and belief.

*Larry D. Hoium* Date 3/31/15

Larry D. Hoium, Anoka County Surveyor  
Minnesota License Number 18165