

CERTIFICATE OF LOCATION OF GOVERNMENT CORNER

County of Anoka

State of Minnesota

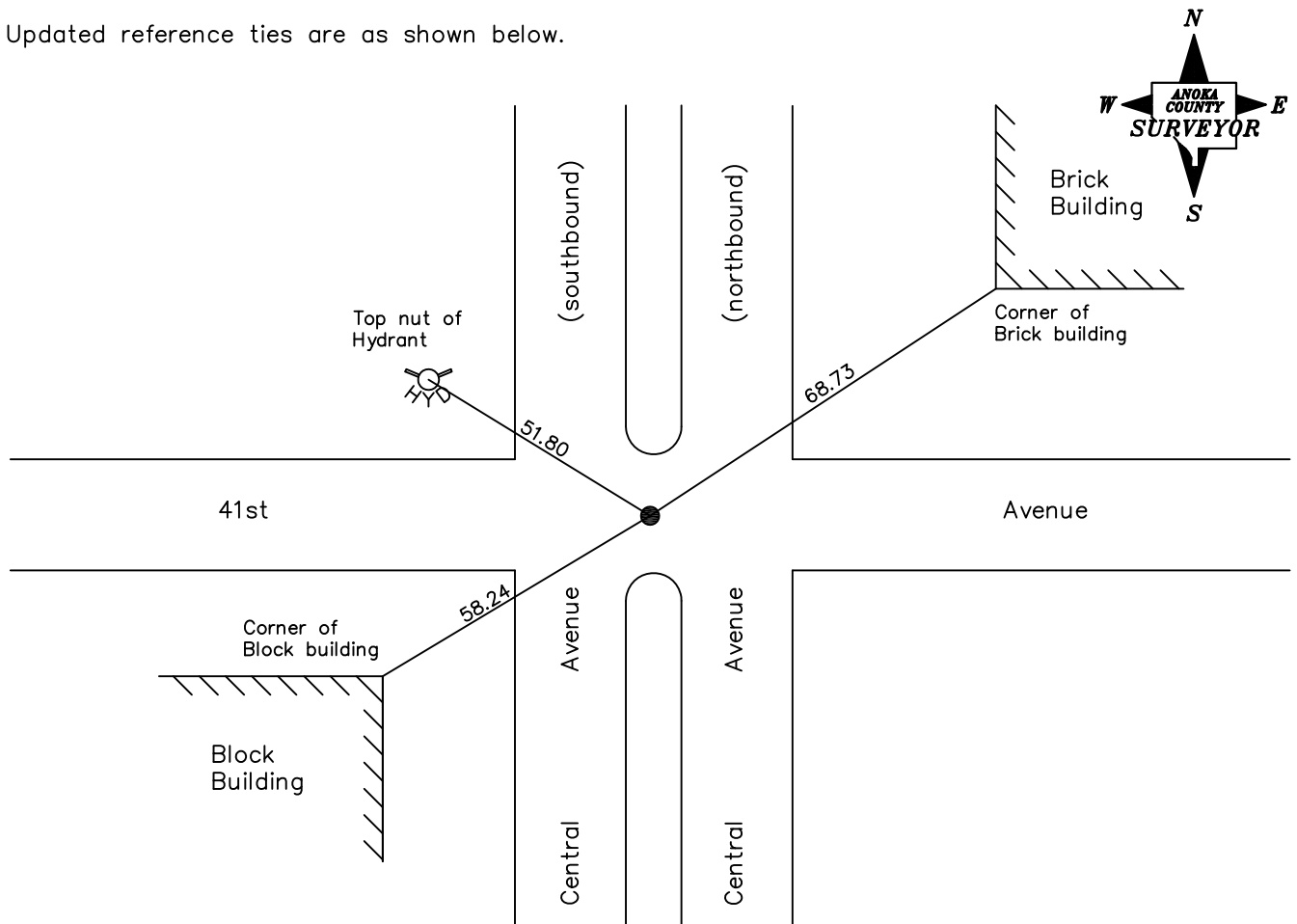
East 1/4 Corner of Sec. 35 Township 30 Range 24

On the 25th day of May, 1978, the described corner was evidenced by a brass plug set by MNDOT

and to perpetuate the location of said corner, at the exact location thereof, a permanent marker was placed consisting of the same brass plug under blacktop

AND on the ___ day of _____, _____, said permanent marker was _____

Updated reference ties are as shown below.



Revised date

8/04/89
10/24/90

N.A.D. 1983 Coordinates
(1996 Adjustment)

County Project Coordinates
Northing <u>Not available</u>
Easting _____
Date _____

I hereby certify that this United States public land survey monument record is correct and complete to the best of my knowledge and belief.

_____ Date _____
 _____, Anoka County Surveyor
 Minnesota License Number _____