

# CERTIFICATE OF LOCATION OF GOVERNMENT CORNER

County of Anoka

State of Minnesota

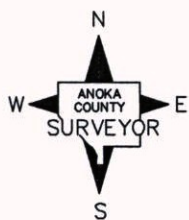
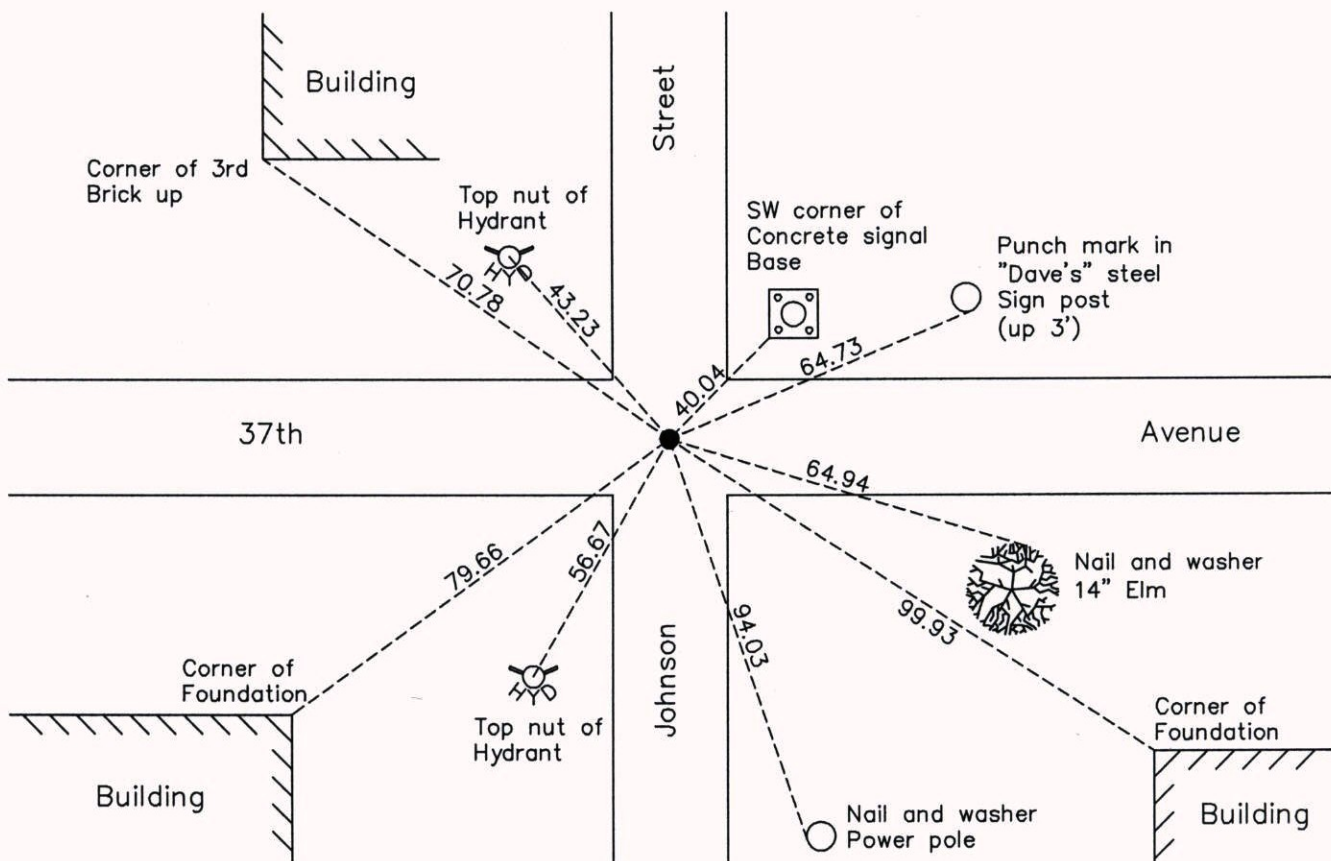
## South 1/4 Corner of Sec. 36 Township 30 Range 24

On the 25th day of May, 1978, the described corner was evidenced by a brass plate in concrete

and to perpetuate the location of said corner, at the exact location thereof, a permanent marker was placed consisting of the same brass plate in concrete set in hole down 0.5' with steel cover

AND on the 3rd day of November, 2014, said permanent marker was found. The ties were unable to be updated because the covered tube was crooked and covering monument.

Updated reference ties are as shown below.



Revision Date  
3/31/15

N.A.D. 1983 Coordinates  
(1996 Adjustment)

County Project Coordinates	
Northing	<u>100123.9263</u>
Easting	<u>507639.4979</u>
Date	<u>7/13/04</u>

I hereby certify that this United States public land survey monument record is correct and complete to the best of my knowledge and belief.

*Larry D. Hoium* Date 3/31/15

Larry D. Hoium, Anoka County Surveyor

Minnesota License Number 18165