

# CERTIFICATE OF LOCATION OF GOVERNMENT CORNER

County of Anoka

State of Minnesota

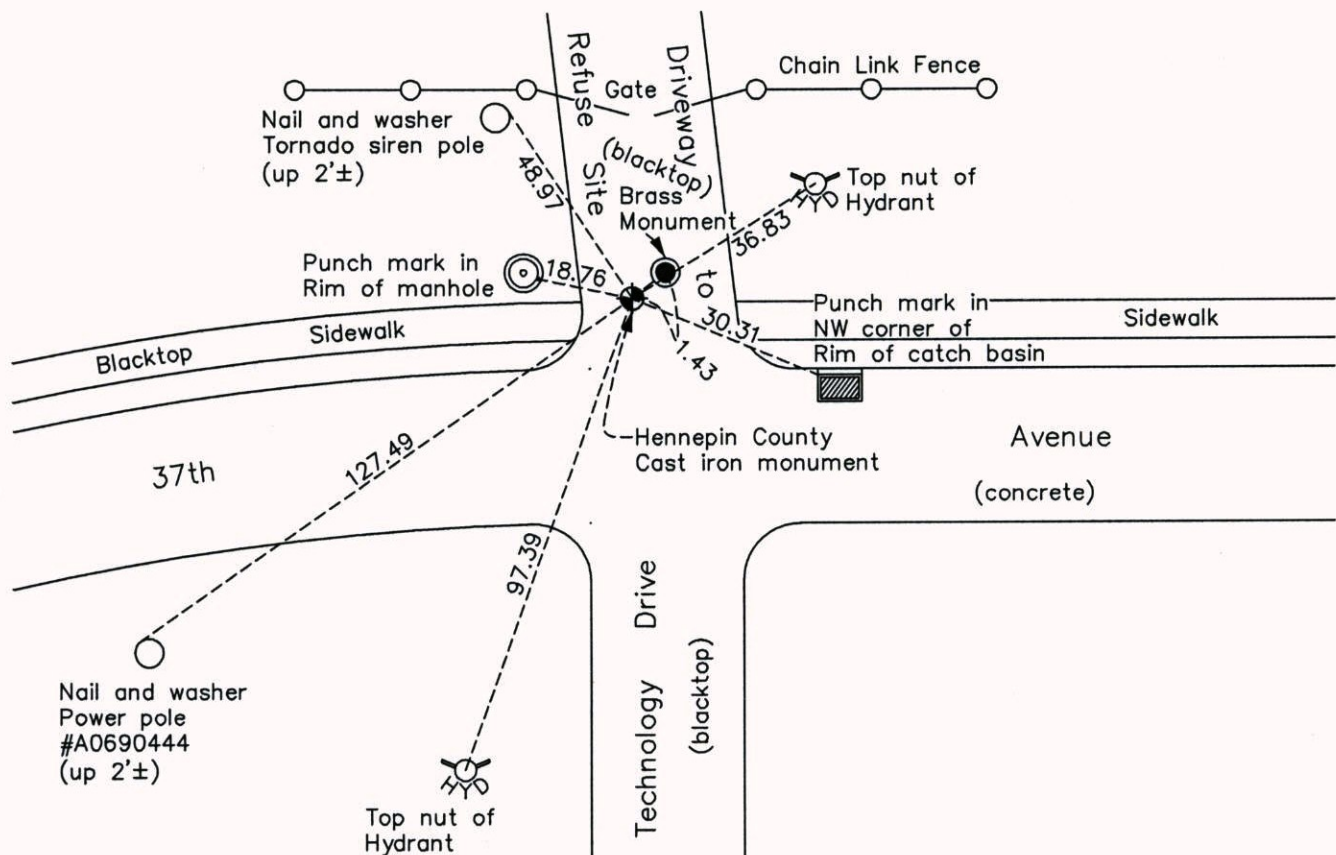
## South 1/4 Corner of Sec. 34 Township 30 Range 24

On the 15th day of September, 1960, the described corner was evidenced by a brass monument in concrete

and to perpetuate the location of said corner, at the exact location thereof, a permanent marker was placed consisting of a Hennepin County cast iron monument

AND on the 2nd day of April, 2015, said permanent marker was found flush with the surface and the ties were updated

Updated reference ties are as shown below.



(Hennepin County Cast Iron Monument)  
N.A.D. 1983 Coordinates  
(1996 Adjustment)

County Project Coordinates	
Northing	100070.0723
Easting	497106.5480
Date	2/16/05

Revision Date  
4/02/15

I hereby certify that this United States public land survey monument record is correct and complete to the best of my knowledge and belief.

*Larry D. Hoium* Date 4/02/15

Larry D. Hoium, Anoka County Surveyor

Minnesota License Number 18165