

CERTIFICATE OF LOCATION OF GOVERNMENT CORNER

County of Anoka

State of Minnesota

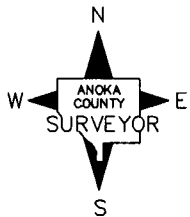
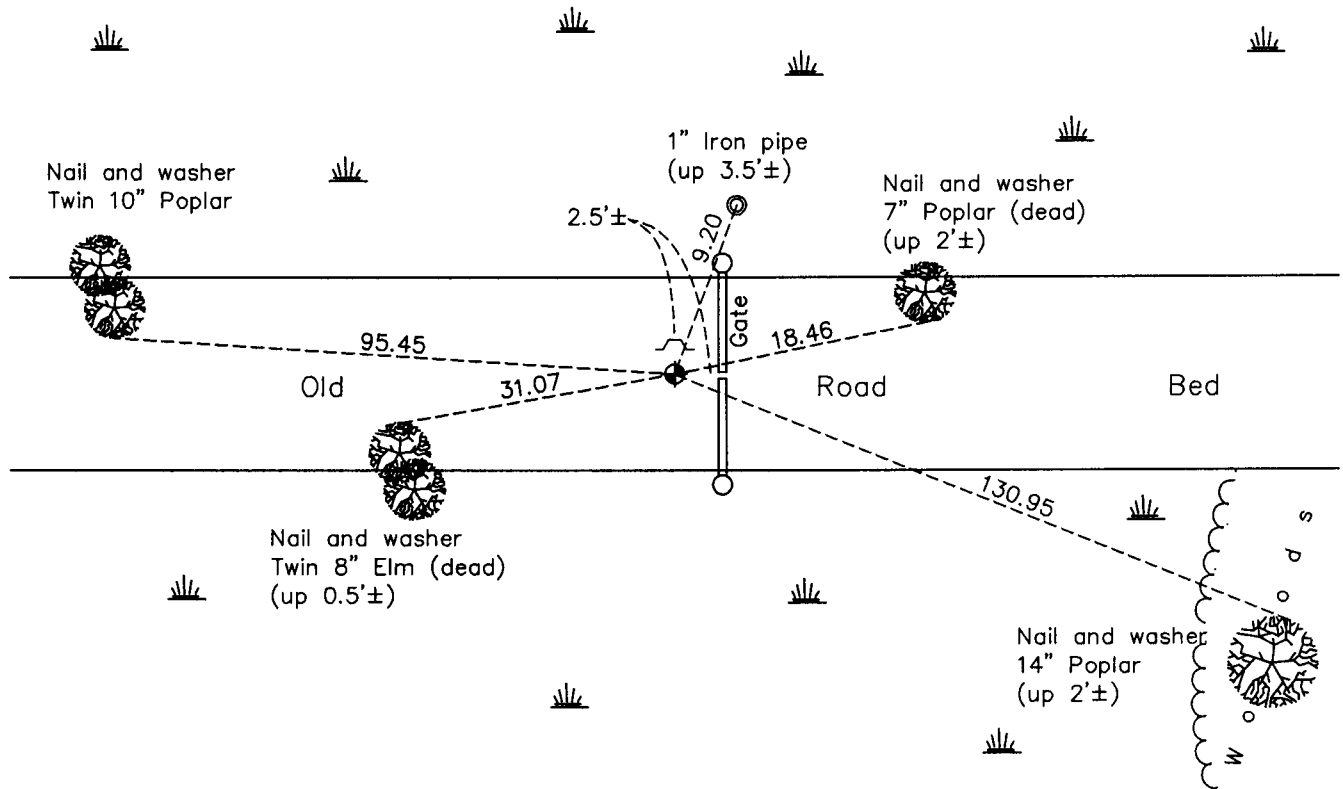
Northeast Corner of Sec. 1 Township 32 Range 24

On the 26th day of January, 1962, the described corner was evidenced by a granite monument

and to perpetuate the location of said corner, at the exact location thereof, a permanent marker was placed consisting of a cast iron monument on top of the granite monument with a sign and post on the north side

AND on the 24th day of January, 2011, said permanent marker was found and the ties were updated

Updated reference ties are as shown below.



Revision Date
3/14/11

N.A.D. 1983 Coordinates
(1996 Adjustment)

County Project Coordinates	
Northing	<u>195834.5046</u>
Easting	<u>500334.0166</u>
Date	<u>12/06/00</u>

I hereby certify that this United States public land survey monument record is correct and complete to the best of my knowledge and belief.

Larry D. Hoium Date 3/14/11

Larry D. Hoium, Anoka County Surveyor

Minnesota License Number 18165

HISTORY OF GOVERNMENT CORNER

Page No. 1

County of Anoka

State of Minnesota

Northeast Corner of Sec. 1 Township 32 Range 24

CORNER HISTORY:

January 26, 1962 - Found 8"X8"X30" granite monument in centerline of old Town Road during excavation for recovery of corner. Corner is in middle of swamp. Granite was set in 1875 (see Surveyor's record in Book 151, Page 1) . Set steel fence post on north side of granite up 1.5'±. Established ties to monument.

August 13, 1964 - Found granite monument and updated ties.

July 19, 1966, July 5, 1968 and June 13, 1972 - Corner location too wet to access.

January 23, 1974 - Found granite monument and updated ties.

January 19, 1978 - Found granite monument under ice and found ties to be good.

October 6, 1978 - Set cast iron monument on top of granite monument in centerline of old road bed. Found steel fence post on north side of monument up 0.2'±. Updated ties.

May 29, 1979 - Found cast iron monument and updated ties.

June 17, 1982 - Found cast iron monument and updated ties.

April 23, 1998 - Replaced broken cast iron monument with a new cast iron monument on top of granite monument, still good. Sign and post on north side. Updated ties.

December 6, 2000 - Found cast iron monument with sign and post on the north side and established NAD 1983 (1996 Adjustment) Anoka County Project Coordinates by Static GPS methods. Updated ties.

January 24, 2011 - Found cast iron monument and updated ties.