

CERTIFICATE OF LOCATION OF GOVERNMENT CORNER

County of Anoka

State of Minnesota

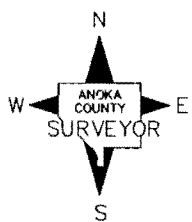
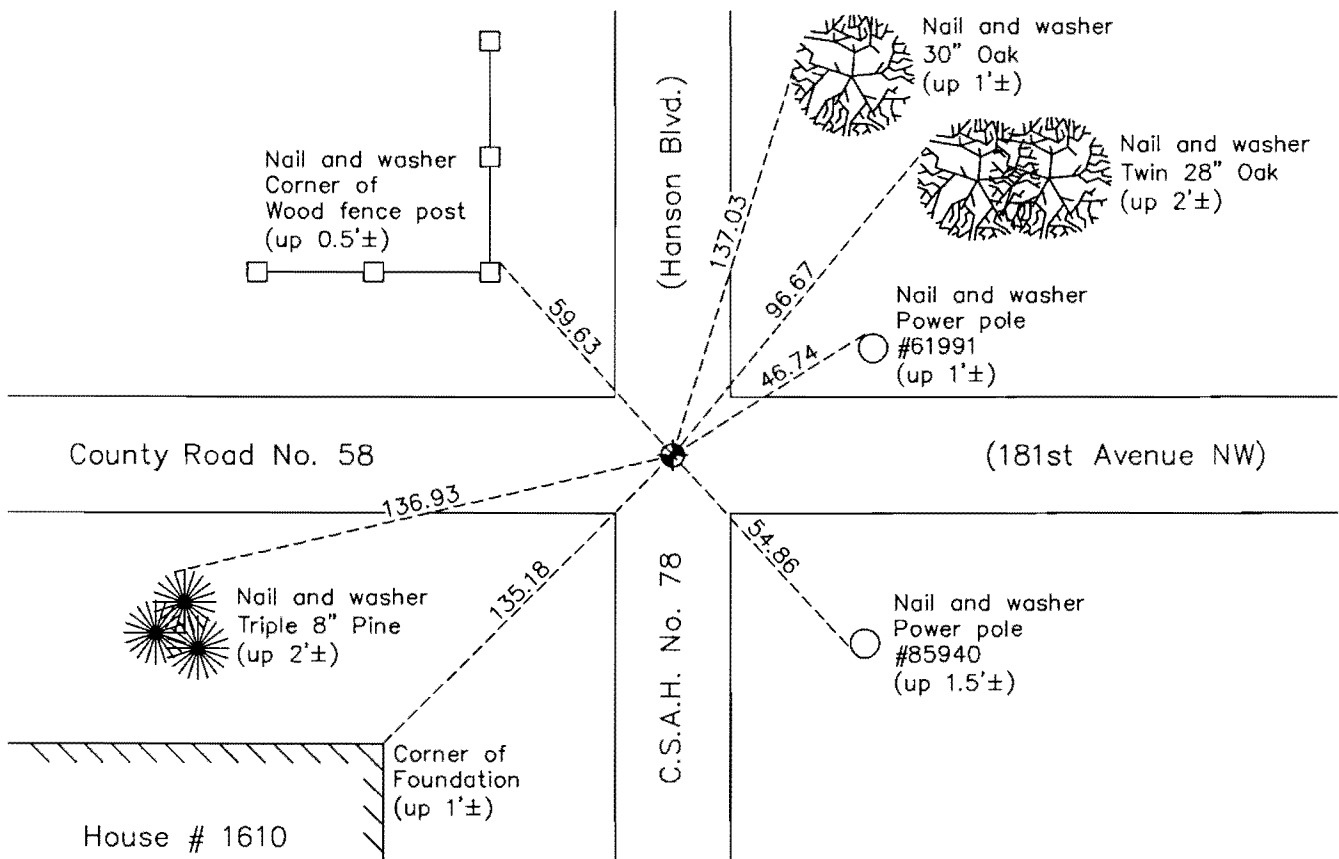
Northwest Corner of Sec. 2 Township 32 Range 24

On the 19th day of September, 1962, the described corner was evidenced by area resurvey

and to perpetuate the location of said corner, at the exact location thereof, a permanent marker was placed consisting of a cast iron monument

AND on the 16th day of June, 2015, said permanent marker was found broken and was replaced with a new cast iron monument. The ties were updated.

Updated reference ties are as shown below.



Revision Date

3/03/16

N.A.D. 1983 Coordinates
(1996 Adjustment)

County Project Coordinates	
Northing	<u>195825.3202</u>
Easting	<u>489813.2327</u>
Date	<u>7/25/00</u>

I hereby certify that this United States public land survey monument record is correct and complete to the best of my knowledge and belief.

Larry D. Hoium Date 3/03/16

Larry D. Hoium, Anoka County Surveyor

Minnesota License Number 18165

HISTORY OF GOVERNMENT CORNER

Page No.

4

County of Anoka

State of Minnesota

Northwest Corner of Sec. 2 Township 32 Range 24

CORNER HISTORY:

September 19, 1962 - Set cast iron monument using area resurvey and established ties to monument.

August 13, 1964 - Found cast iron monument and updated ties.

July 5, 1968 - Found cast iron monument and updated ties.

June 19, 1972 - Found cast iron monument and updated ties.

May 24, 1976 - Found cast iron monument and updated ties.

May 29, 1979 - Found cast iron monument and updated ties.

June 17, 1982 - Found cast iron monument and updated ties.

August 1, 1988 - Found cast iron monument and updated ties.

July 14, 1993 - Found cast iron monument and updated ties.

July 25, 2000 - Found cast iron monument and established NAD 1983 (1996 Adjustment) Anoka County Project Coordinates by Static GPS methods. Updated ties.

January 18, 2011 - Found cast iron monument and updated ties.

June 9, 2015 - Found cast iron monument broken. Reset position of corner with P.K. nail using ties and verified position by Static GPS methods.

June 16, 2015 - Replaced broken cast iron monument with a new cast iron monument. Updated ties.