

CERTIFICATE OF LOCATION OF GOVERNMENT CORNER

County of Anoka

State of Minnesota

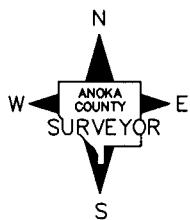
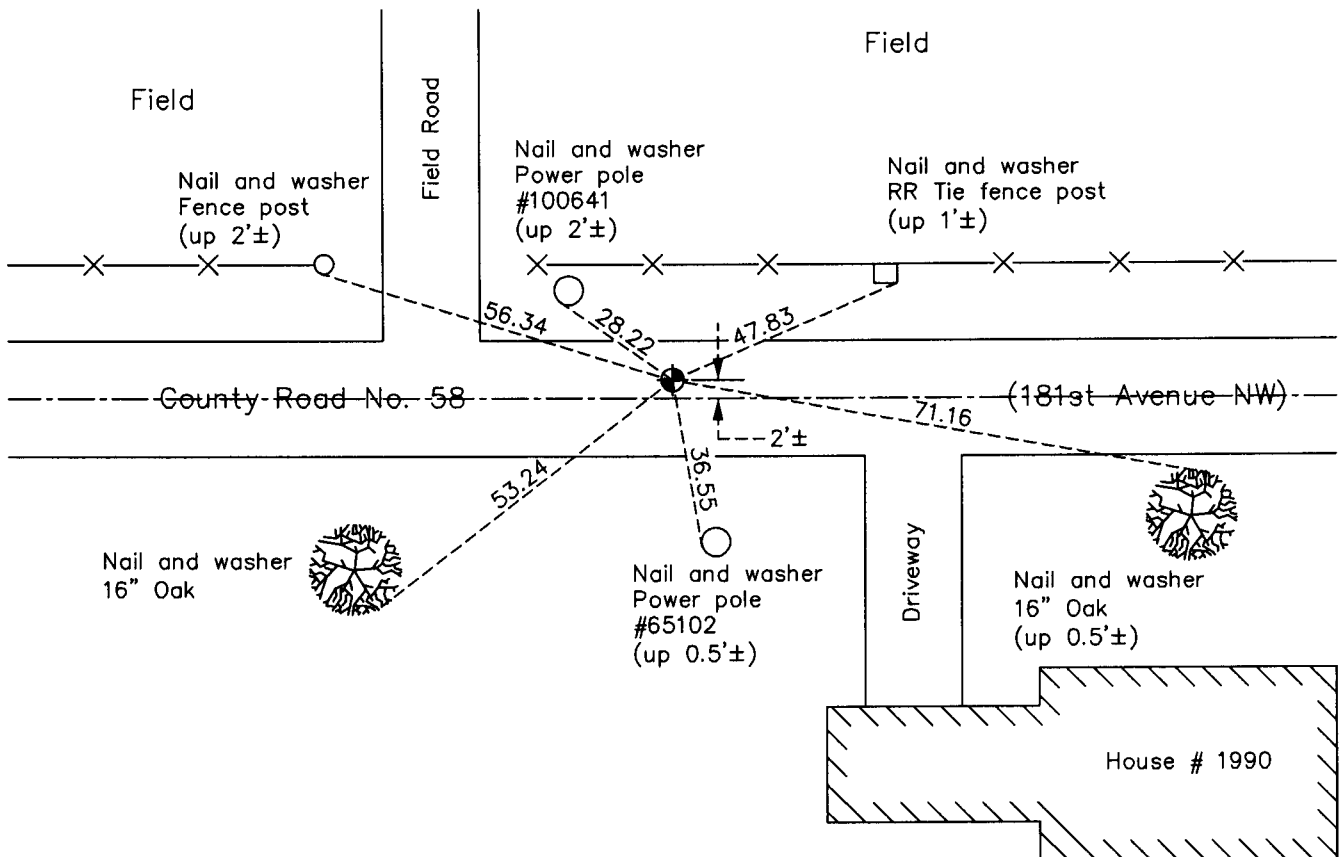
North 1/4 Corner of Sec. 3 Township 32 Range 24

On the 20th day of September, 1962, the described corner was evidenced by area resurvey

and to perpetuate the location of said corner, at the exact location thereof, a permanent marker was placed consisting of a cast iron monument

AND on the day of October, 2010, said permanent marker was found flush with the surface and the ties were updated

Updated reference ties are as shown below.



Revision Date
3/15/11

N.A.D. 1983 Coordinates
(1996 Adjustment)

County Project Coordinates	
Northing	195811.9147
Easting	487185.8897
Date	7/25/00

I hereby certify that this United States public land survey monument record is correct and complete to the best of my knowledge and belief.

Larry D. Hoium Date 3/15/11

Larry D. Hoium, Anoka County Surveyor

Minnesota License Number 18165

HISTORY OF GOVERNMENT CORNER

Page No. 5

County of Anoka

State of Minnesota

North 1/4 Corner of Sec. 3 Township 32 Range 24

CORNER HISTORY:

September 20, 1962 - Set cast iron monument using area resurvey.

August 13, 1964 - Found cast iron monument and updated ties.

July 5, 1968 - Found cast iron monument and updated ties.

June 19, 1972 - Found cast iron monument and updated ties.

May 24, 1976 - Found cast iron monument and updated ties.

May 29, 1979 - Found cast iron monument and updated ties.

June 18, 1982 - Found cast iron monument and updated ties.

May 30, 1985 - Found cast iron monument and updated ties.

August 1, 1988 - Found cast iron monument and updated ties.

July 14, 1993 - Found cast iron monument and updated ties.

May 10, 1999 - Set construction ties and removed cast iron monument prior to road construction.

May 11, 1999 - Set cast iron monument after road construction using construction ties. Updated ties.

July 25, 2000 - Found cast iron monument and established NAD 1983 (1996 Adjustment) Anoka County Project Coordinates by Static GPS methods. Updated ties.

October 2010 - Found cast iron monument set flush with the road surface and updated ties.