

# CERTIFICATE OF LOCATION OF GOVERNMENT CORNER

County of Anoka

State of Minnesota

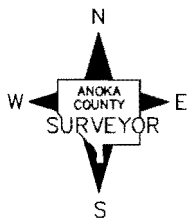
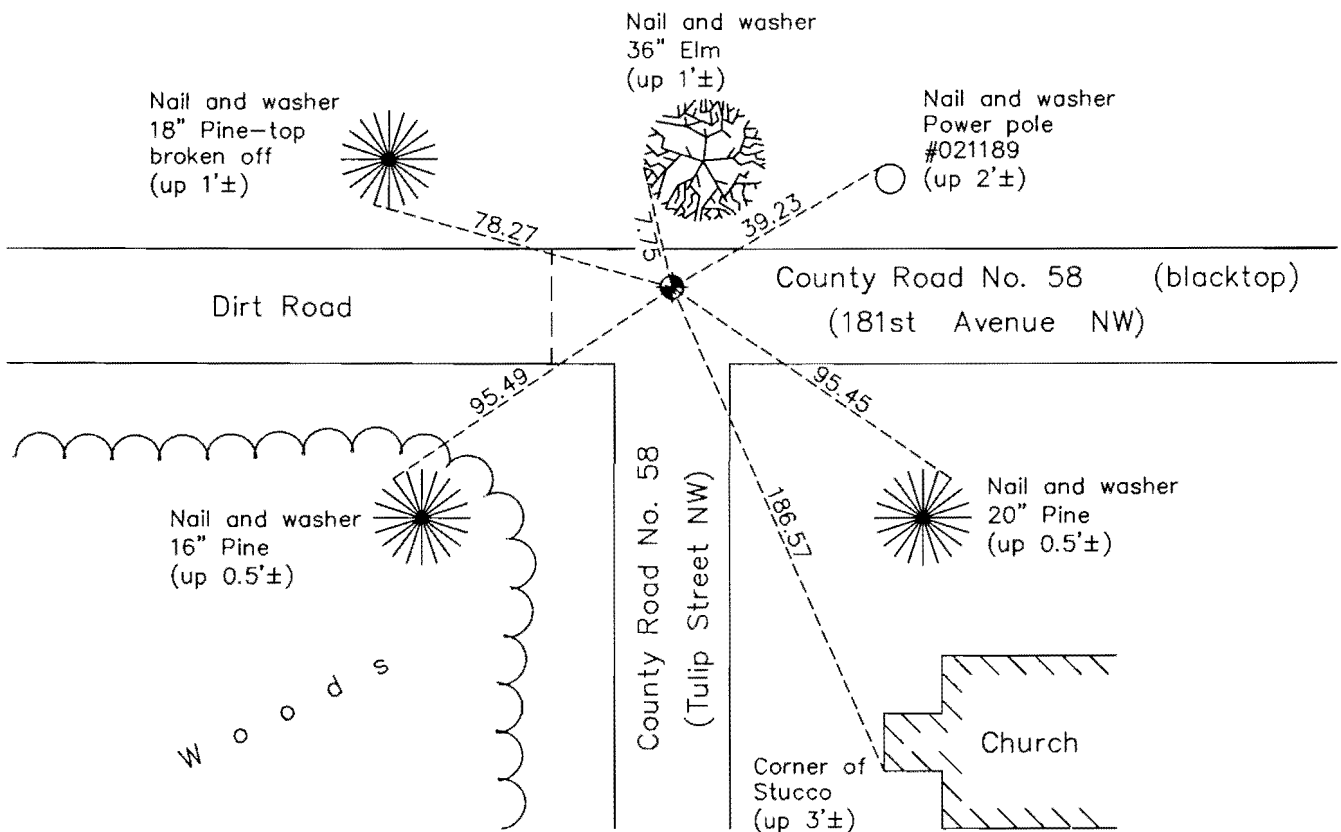
## North 1/4 Corner of Sec. 5 Township 32 Range 24

On the 31st day of May, 1963, the described corner was evidenced by a granite monument from highway ties

and to perpetuate the location of said corner, at the exact location thereof, a permanent marker was placed consisting of a cast iron monument set in concrete located on top of the granite monument

AND on the 15th day of August, 2014, said permanent marker was reset 0.8'± below surface due to new road construction and the ties were updated

Updated reference ties are as shown below.



Revision Date  
3/24/16

N.A.D. 1983 Coordinates  
(1996 Adjustment)

County Project Coordinates	
Northing	195989.3900
Easting	476675.9344
Date	10/03/00

I hereby certify that this United States public land survey monument record is correct and complete to the best of my knowledge and belief.

Date 3/24/16  
 Larry D. Hoium, Anoka County Surveyor  
 Minnesota License Number 18165

# HISTORY OF GOVERNMENT CORNER

Page No. 7A

County of Anoka

State of Minnesota

North 1/4 Corner of Sec. 5 Township 32 Range 24

## **CORNER HISTORY:**

May 31, 1963 - Found 8" granite monument set down 1' using Anoka County Highway Department ties. Set iron pipe on north side of monument and established ties to monument.

July 28, 1965 - Found 8" granite monument and updated ties.

July 3, 1968 - Found 8" granite monument and updated ties.

July 26, 1971 - Found 8" granite monument and updated ties.

July 15, 1975 - Found 8" granite monument and updated ties.

July 17, 1978 - Found 8" granite monument and updated ties.

July 15, 1987 - Found 8" granite monument and updated ties.

July 9, 1992 - Found 8" granite monument and updated ties.

November 22, 1993 - Found 8" granite monument and set a partial cast iron monument in concrete on top of granite monument. Updated ties.

October 3, 2000 - Found cast iron monument and established NAD 1983 (1996 Adjustment) Anoka County Project Coordinates by Static GPS methods. Updated ties.

December 22, 2010 - Found cast iron monument flush with the road surface and updated ties.

June 3, 2014 - Set construction ties and removed cast iron monument prior to road construction. Left granite monument 0.8'± below surface.

August 15, 2014 - Set cast iron monument 0.8'± below surface due to road construction using construction ties. Verified location of corner by VRS GPS methods. Updated ties.