

CERTIFICATE OF LOCATION OF GOVERNMENT CORNER

County of Anoka

State of Minnesota

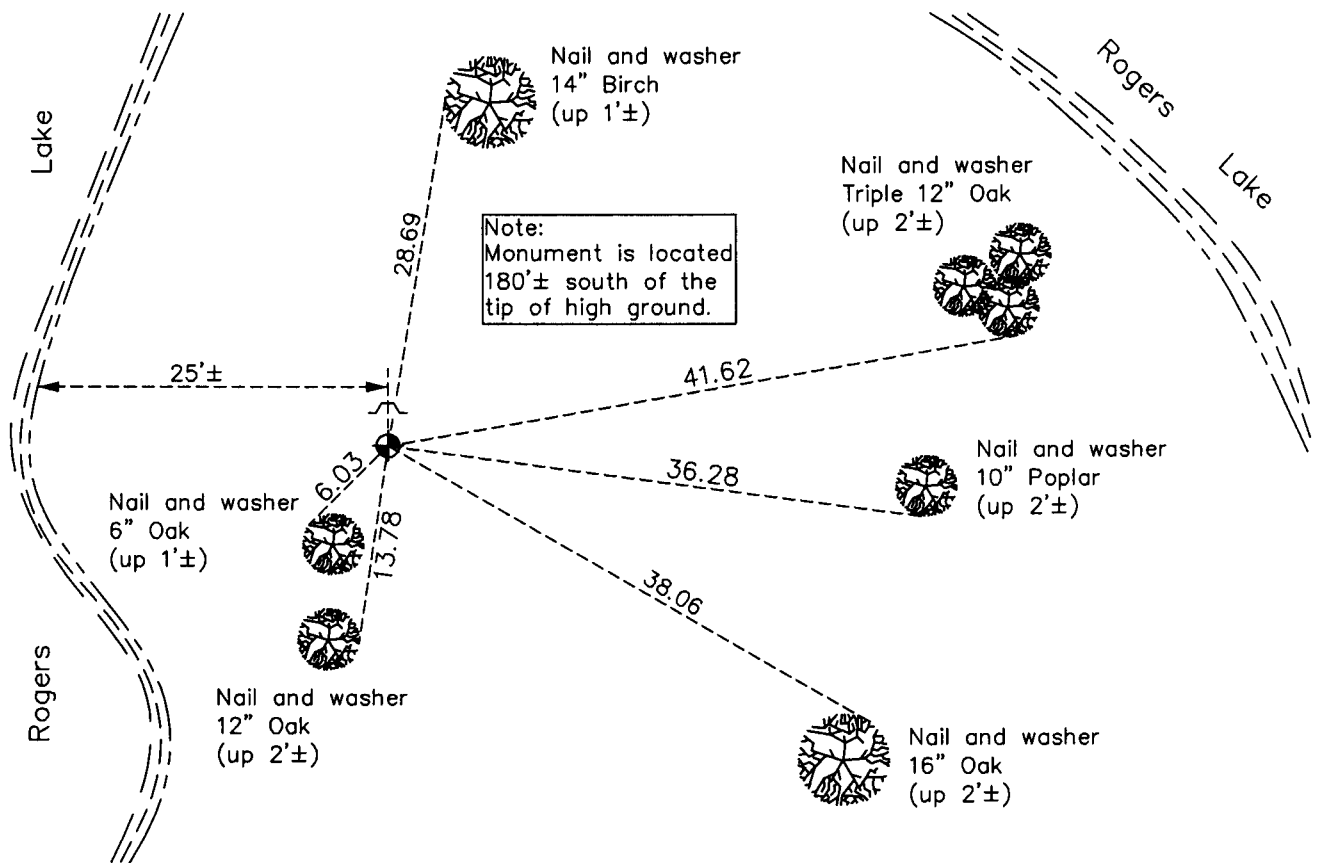
Witness Corner of Sec. 6 Township 32 Range 24
 (on north line of section)

On the 22nd day of December, 1988, the described corner was evidenced by area resurvey

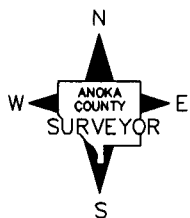
and to perpetuate the location of said corner, at the exact location thereof, a permanent marker was placed consisting of a cast iron monument with a sign and post on the north side

AND on the 4th day of January, 2011, said permanent marker was found flush with the surface and the ties were updated

Updated reference ties are as shown below.



Note:
Monument is located
180'± south of the
tip of high ground.



Revision Date

4/04/11

N.A.D. 1983 Coordinates
(1996 Adjustment)

County Project Coordinates	
Northing	196130.1730
Easting	468896.6920
Date	1/04/01

I hereby certify that this United States public land survey monument record is correct and complete to the best of my knowledge and belief.

Larry D. Hoium Date 4/04/11

Larry D. Hoium, Anoka County Surveyor
Minnesota License Number 18165

HISTORY OF GOVERNMENT CORNER

Page No. 9

County of Anoka

State of Minnesota

Witness Corner of Sec. 6 Township 32 Range 24
(on north line of section)

CORNER HISTORY:

December 22, 1965 - Set bridge spike using area resurvey. Corner is west of N1/4 of Section 6.

1966 - Replaced bridge spike with a cast iron monument. Updated ties.

July 8, 1968 - Found cast iron monument and updated ties.

July 7, 1972 - Found cast iron monument and updated ties.

May 25, 1976 - Found cast iron monument and updated ties.

May 31, 1979 - Found cast iron monument and updated ties.

July 7, 1982 - Found cast iron monument and updated ties.

August 11, 1988 - Found cast iron monument and updated ties.

January 4, 2001 - Found cast iron monument with a sign and post on the north side and established NAD 1983 (1996 Adjustment) Anoka County Project Coordinates by Static GPS methods. Updated ties.

January 4, 2011 - Found cast iron monument flush with the surface and with a sign and post on the north side. Updated ties.