

CERTIFICATE OF LOCATION OF GOVERNMENT CORNER

County of Anoka

State of Minnesota

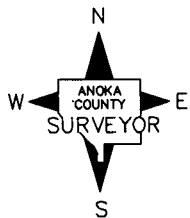
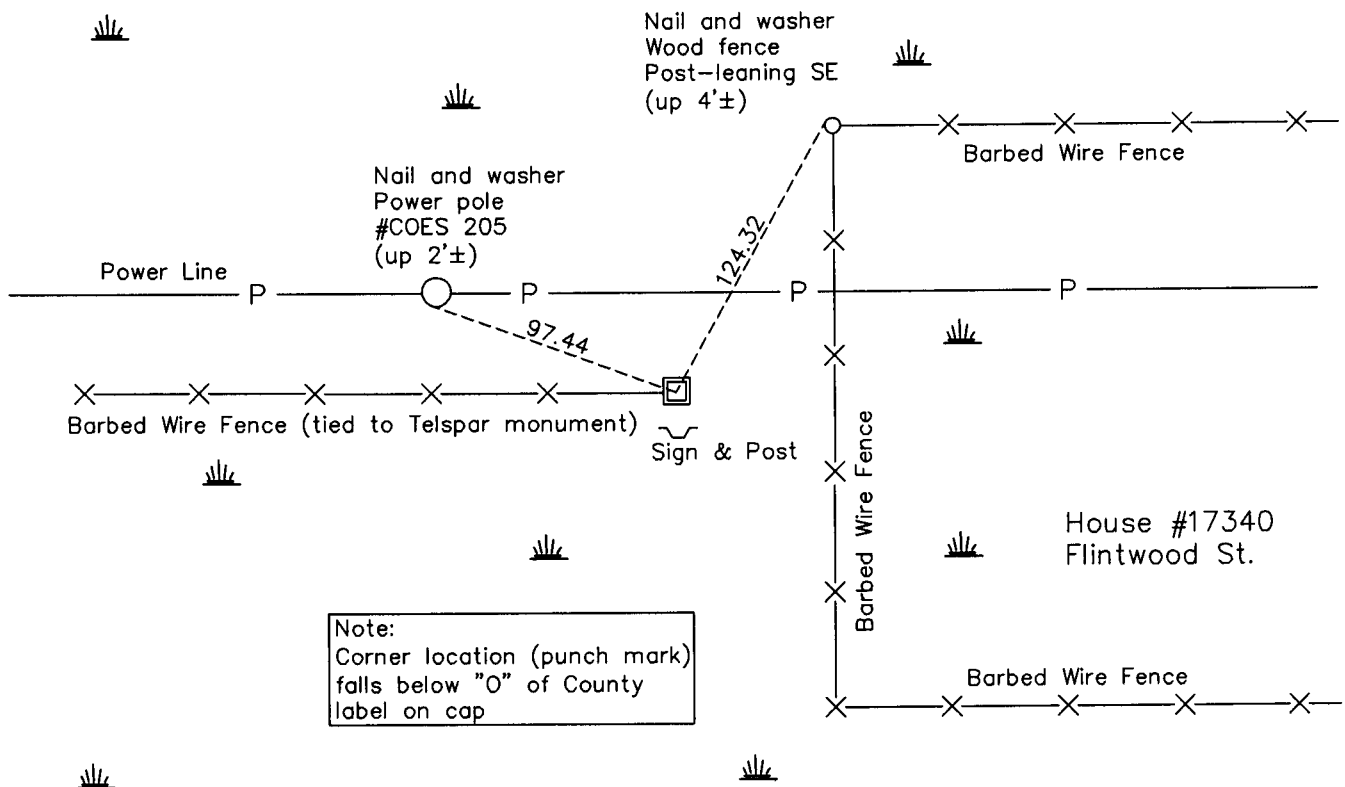
South 1/4 Corner of Sec. 1 Township 32 Range 24

On the 8th day of February, 1963, the described corner was evidenced by area resurvey

and to perpetuate the location of said corner, at the exact location thereof, a permanent marker was placed consisting of a red & white 2" square steel Telspar monument

AND on the 17th day of March, 2011, said permanent marker was replaced with a new red & white 2" square steel Telspar monument with a 'County Surveyor' cap up 0.5'±

Updated reference ties are as shown below.



Revision Date

4/06/11

N.A.D. 1983 Coordinates
(1996 Adjustment)

County Project Coordinates	
Northing	<u>190600.5036</u>
Easting	<u>497778.1632</u>
Date	<u>12/06/00</u>

I hereby certify that this United States public land survey monument record is correct and complete to the best of my knowledge and belief.

Larry D. Hoium Date 4/06/11

Larry D. Hoium, Anoka County Surveyor

Minnesota License Number 18165

HISTORY OF GOVERNMENT CORNER

Page No. 17

County of Anoka

State of Minnesota

South 1/4 Corner of Sec. 1 Township 32 Range 24

CORNER HISTORY:

February 8, 1963 - Set 1" X 9' iron pipe up 4' in swamp painted with 6" red and white stripes using area resurvey. No available features in close proximity to establish ties to monument.

August 13, 1964 - Found 1" iron pipe.

Summer 1968 - Too wet to access corner.

June 12, 1972 - Found 1" iron pipe and established ties to monument.

February 13, 1978 - Found 1" iron pipe and updated ties.

May 30, 1979 - Found 1" iron pipe and updated ties.

January 4, 1980 - Found 1" iron pipe missing.

February 20, 1980 - Reset position of corner with red and white iron pipe up 3'± with a sign attached using area resurvey. Established ties to monument.

June 22, 1982 - Found red and white iron pipe and updated ties.

June 4, 1985 - Found red and white iron pipe and updated ties.

August 12, 1988 - Found red and white iron pipe and updated ties.

July 27, 1993 - Found red and white iron pipe and updated ties.

December 6, 2000 - Found red and white iron pipe and established NAD 1983 (1996 Adjustment) Anoka County Project Coordinates by Static GPS methods. Updated ties.

January 25, 2011 - Found red and white 2" square steel Telspar monument up 5'± (date set unknown) and leaning 1'± west. Updated ties (measured to base of monument) .

February 25, 2011 - Found leaning red and white Telspar monument and verified position of base of monument by Static GPS methods.

March 17, 2011 - Replaced leaning red and white Telspar monument with a new 8' long red and white 2" square steel Telspar monument set up 0.5' with a 'County Surveyor' cap and punchmark at location of corner. Punchmark is below "o" of the word "County" on cap. Set sign and post on south side of monument and updated ties.