

CERTIFICATE OF LOCATION OF GOVERNMENT CORNER

County of Anoka

State of Minnesota

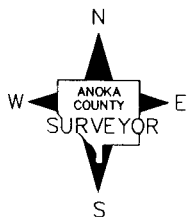
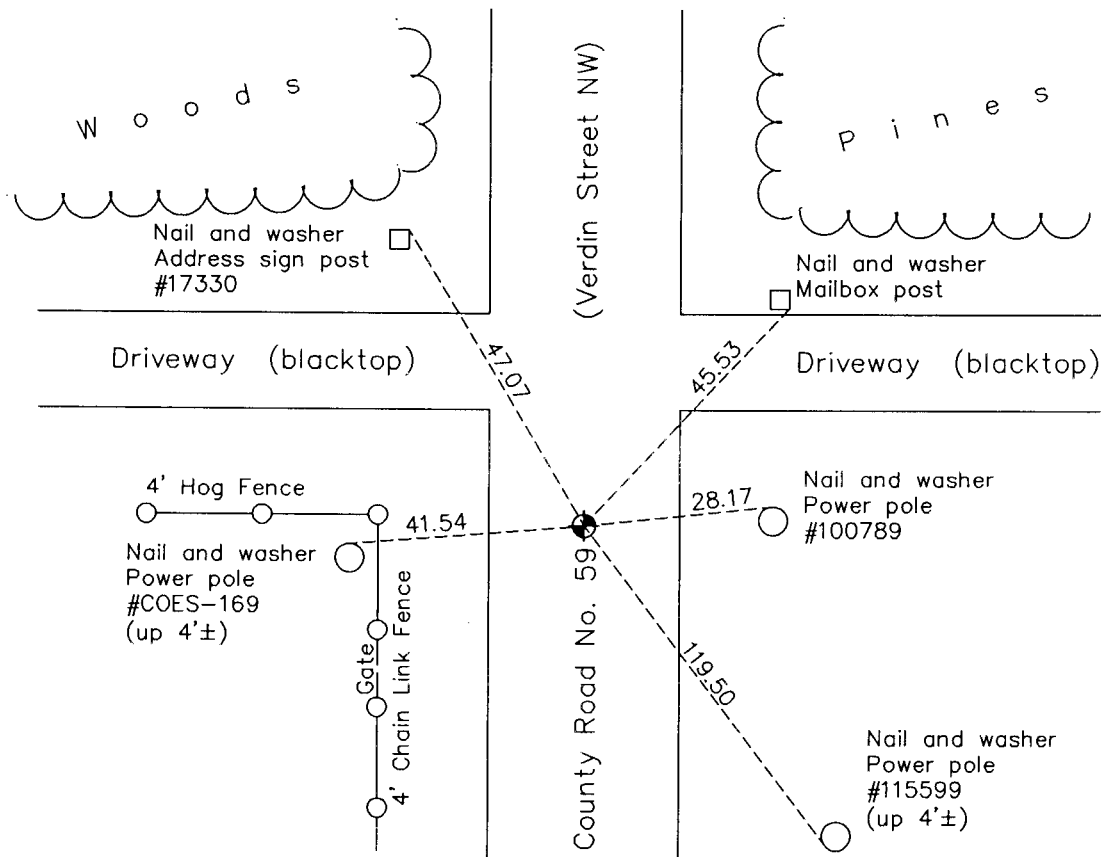
Southeast Corner of Sec. 4 Township 32 Range 24

On the 3rd day of November, 1961, the described corner was evidenced by area resurvey

and to perpetuate the location of said corner, at the exact location thereof, a permanent marker was placed consisting of a cast iron monument

AND on the 17th day of August, 2012, said permanent marker was raised to the surface after overlay of road was completed

Updated reference ties are as shown below.



N.A.D. 1983 Coordinates
(1996 Adjustment)

County Project Coordinates	
Northing	190756.5086
Easting	484630.8647
Date	7/13/00

Revision Date
12/17/12

I hereby certify that this United States public land survey monument record is correct and complete to the best of my knowledge and belief.

Larry D. Hoium Date 12/17/12

Larry D. Hoium, Anoka County Surveyor

Minnesota License Number 18165

HISTORY OF GOVERNMENT CORNER

Page No. 22

County of Anoka

State of Minnesota

Southeast Corner of Sec. 4 Township 32 Range 24

CORNER HISTORY:

September 27, 1961 - Set cast iron monument using old survey distances from the north and east. Monument is 5'± south of pole line. Established ties to monument.

November 3, 1961 - Found cast iron monument and updated ties.

August 19, 1964 - Found cast iron monument and updated ties.

July 10, 1968 - Found cast iron monument and updated ties.

June 20, 1972 - Set extendible cast iron monument with P.K. nails set 2.00' north and east.

May 27, 1976 - Added spacer/s and replaced top of cast iron monument. Monument is flush with surface. Updated ties.

May 30, 1979 - Found cast iron monument and updated ties.

July 29, 1988 - Found cast iron monument and updated ties.

July 26, 1993 - Found cast iron monument and updated ties.

May 12, 1997 - Found cast iron monument and updated ties.

July 13, 2000 - Found cast iron monument and established NAD 1983 (1996 Adjustment) Anoka County Project Coordinates by Static GPS methods. Updated ties.

October 18, 2010 - Found cast iron monument flush with the surface and updated ties.

July 12, 2012 - Found cast iron monument broken. Verified position of broken monument using fins by Static GPS methods.

July 16, 2012 - Replaced broken cast iron monument with a new cast iron monument. Updated ties.

August 17, 2012 - Added spacer/s and replaced top of cast iron monument after road surface overlay. Monument is flush with surface. Updated ties.