

CERTIFICATE OF LOCATION OF GOVERNMENT CORNER

County of Anoka

State of Minnesota

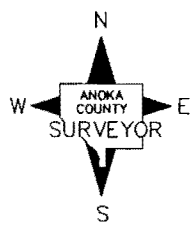
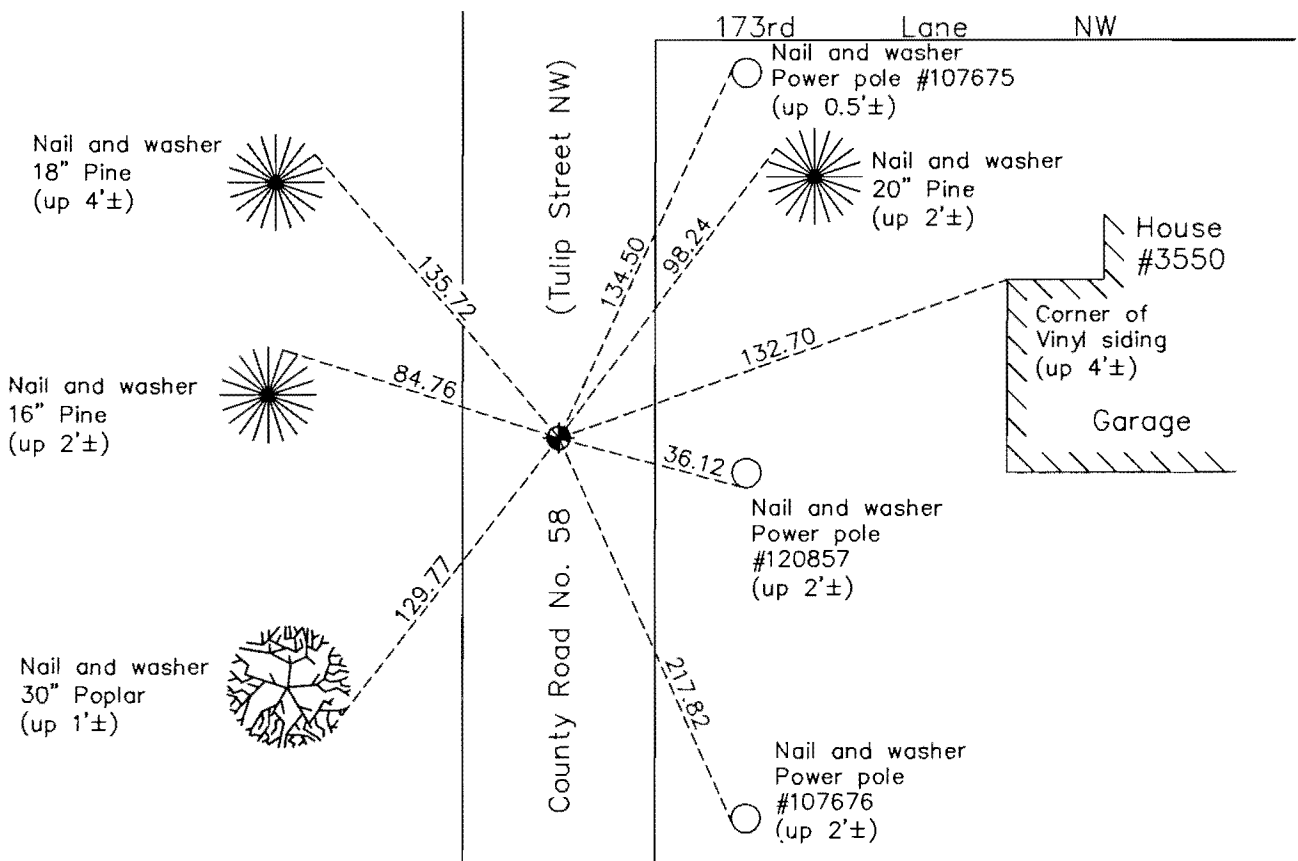
South 1/4 Corner of Sec. 5 Township 32 Range 24

On the 9th day of July, 1968, the described corner was evidenced by a 1/2" iron pipe

and to perpetuate the location of said corner, at the exact location thereof, a permanent marker was placed consisting of a cast iron monument

AND on the day of June, 2014, said permanent marker was raised to flush with the surface after road construction and the ties were updated

Updated reference ties are as shown below.



Revision Date
3/24/16

N.A.D. 1983 Coordinates
(1996 Adjustment)

County Project Coordinates	
Northing	<u>190908.1924</u>
Easting	<u>476712.4436</u>
Date	<u>10/03/00</u>

I hereby certify that this United States public land survey monument record is correct and complete to the best of my knowledge and belief.

Larry D. Hoium Date 3/24/16

Larry D. Hoium, Anoka County Surveyor

Minnesota License Number 18165

HISTORY OF GOVERNMENT CORNER

Page No. 25

County of Anoka

State of Minnesota

South 1/4 Corner of Sec. 5 Township 32 Range 24

CORNER HISTORY:

May 1960 - Dug for but could not find granite monument shown on Anoka County Highway Department notes.

July 9, 1968 - Found 1/2" iron pipe set by N.C. Hoium. Replaced iron pipe with cast iron monument and set P.K. nails 2.00' north and east of monument. Established ties to monument.

June 19, 1972 - Found cast iron monument and updated ties.

May 26, 1976 - Found cast iron monument and updated ties.

May 31, 1979 - Found cast iron monument and updated ties.

June 21, 1982 - Found cast iron monument and updated ties.

June 4, 1985 - Found cast iron monument and updated ties.

August 12, 1988 - Found cast iron monument and updated ties.

July 14, 1993 - Found cast iron monument and updated ties.

October 3, 2000 - Found cast iron monument and established NAD 1983 (1996 Adjustment) Anoka County Project Coordinates by Static GPS methods. Updated ties.

December 21, 2010 - Found cast iron monument down 0.2'± and updated ties.

May 30, 2014 - Loosened top of cast iron monument prior to overlaying road surface.

June 2014 - Raised cast iron monument to flush with the surface after road construction and updated ties.