

CERTIFICATE OF LOCATION OF GOVERNMENT CORNER

County of Anoka

State of Minnesota

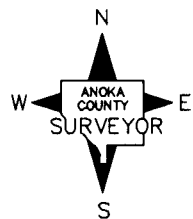
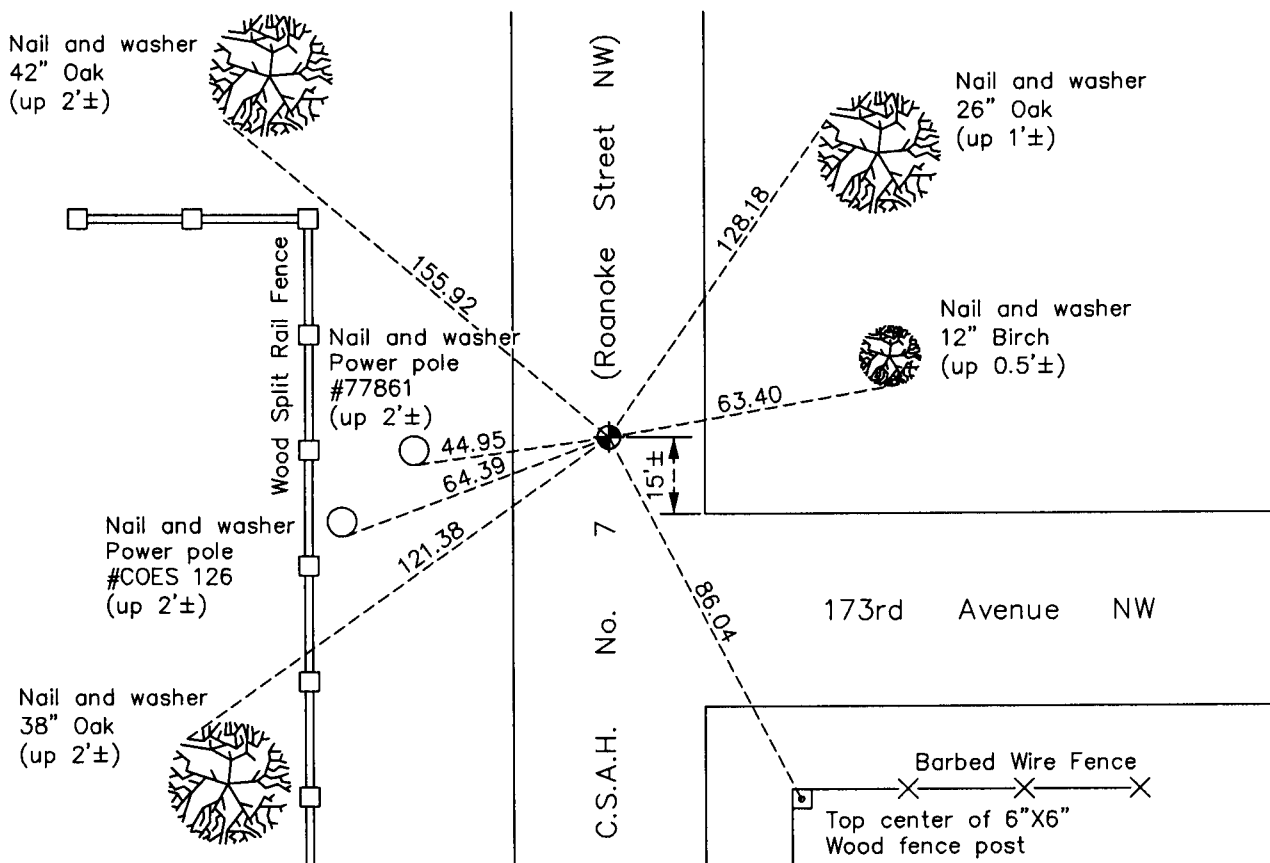
Southwest Corner of Sec. 6 Township 32 Range 24

On the 13th day of December, 1965, the described corner was evidenced by area resurvey

and to perpetuate the location of said corner, at the exact location thereof, a permanent marker was placed consisting of a cast iron monument

AND on the 6th day of January, 2011, said permanent marker was found flush with the surface and the ties were updated

Updated reference ties are as shown below.



Revision Date

4/18/11

N.A.D. 1983 Coordinates
(1996 Adjustment)

County Project Coordinates	
Northing	190902.2367
Easting	468631.0899
Date	9/07/99

I hereby certify that this United States public land survey monument record is correct and complete to the best of my knowledge and belief.

Larry D. Hoium Date 4/18/11

Larry D. Hoium, Anoka County Surveyor

Minnesota License Number 18165

HISTORY OF GOVERNMENT CORNER

County of Anoka

State of Minnesota

Southwest Corner of Sec. 6 Township 32 Range 24

CORNER HISTORY:

December 13, 1965 - Set P.K. nail using area resurvey and set P.K. nails 2.00' north and east of corner location. Established ties to monument.

May 27, 1966 - Replaced P.K. nail with a cast iron monument and updated ties.

July 8, 1968 - Found cast iron monument and updated ties.

June 29, 1972 - Found cast iron monument and updated ties.

May 26, 1976 - Found cast iron monument and updated ties.

June 21, 1982 - Found cast iron monument and updated ties.

May 29, 1985 - Found cast iron monument and updated ties.

July 15, 1988 - Found cast iron monument and updated ties.

August 30, 1990 - Raised cast iron monument up to flush with surface. Updated ties.

July 15, 1993 - Found cast iron monument and updated ties.

September 7, 1999 - Found cast iron monument and established NAD 1983 (1996 Adjustment) Anoka County Project Coordinates by Static GPS methods. Updated ties.

January 6, 2011 - Found cast iron monument flush with the surface and updated ties.