

# CERTIFICATE OF LOCATION OF GOVERNMENT CORNER

County of Anoka

State of Minnesota

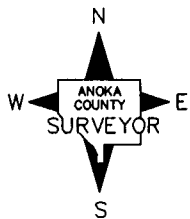
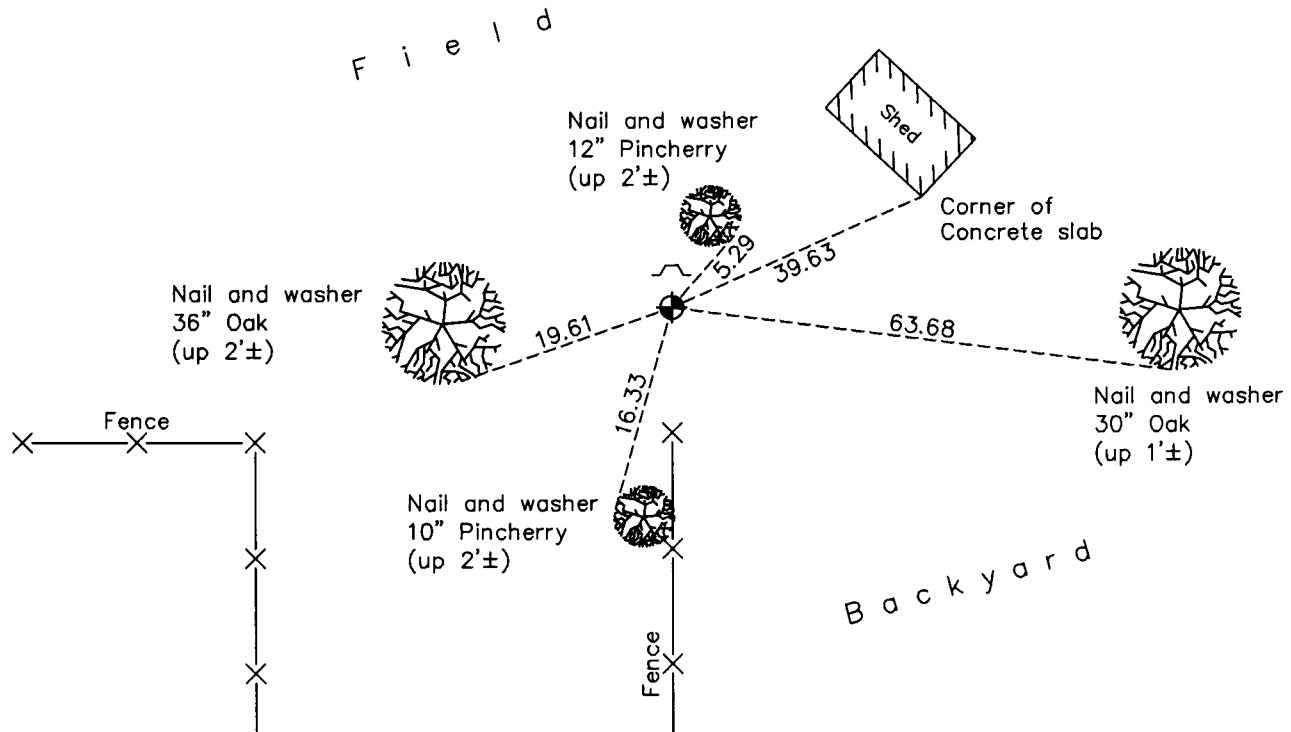
## East 1/4 Corner of Sec. 12 Township 32 Range 24

On the 14th day of August, 1964, the described corner was evidenced by a 1 1/4" iron pipe

and to perpetuate the location of said corner, at the exact location thereof, a permanent marker was placed consisting of a cast iron monument with a sign and post on the north side

AND on the 25th day of January, 2011, said permanent marker was found and the ties were updated

Updated reference ties are as shown below.



Revision Date  
4/19/11

N.A.D. 1983 Coordinates  
(1996 Adjustment)

County Project Coordinates	
Northing	<u>187931.1731</u>
Easting	<u>500387.8424</u>
Date	<u>12/01/00</u>

I hereby certify that this United States public land survey monument record is correct and complete to the best of my knowledge and belief.

*Larry D. Hoium* Date 4/19/11

Larry D. Hoium, Anoka County Surveyor

Minnesota License Number 18165

# HISTORY OF GOVERNMENT CORNER

Page No. 36

County of Anoka

State of Minnesota

## East 1/4 Corner of Sec. 12 Township 32 Range 24

### **CORNER HISTORY:**

August 14, 1964 - Found 1 1/4" iron pipe up 0.3'± using 1960 ties by N.C. Hoium. Corner is under north - south fence line. Established ties to monument.

July 22, 1966 - Found 1 1/4" iron pipe and updated ties.

July 24, 1968 - Replaced 1 1/4" iron pipe with a cast iron monument set up 0.1'±. Updated ties.

June 21, 1972 - Found cast iron monument and updated ties.

May 27, 1976 - Found cast iron monument and updated ties.

June 1, 1979 - Found cast iron monument and updated ties.

June 30, 1982 - Found cast iron monument and updated ties.

June 10, 1985 - Found cast iron monument and updated ties.

August 15, 1988 - Found cast iron monument with sign and post on north side of monument ( date set unknown) and updated ties.

December 1, 2000 - Found cast iron monument and established NAD 1983 ( 1996 Adjustment) Anoka County Project Coordinates by Static GPS methods. Updated ties.

January 25, 2011 - Found cast iron monument with sign and post on north side of monument and updated ties.