

CERTIFICATE OF LOCATION OF GOVERNMENT CORNER

County of Anoka

State of Minnesota

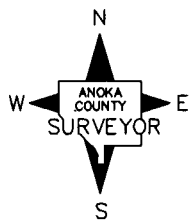
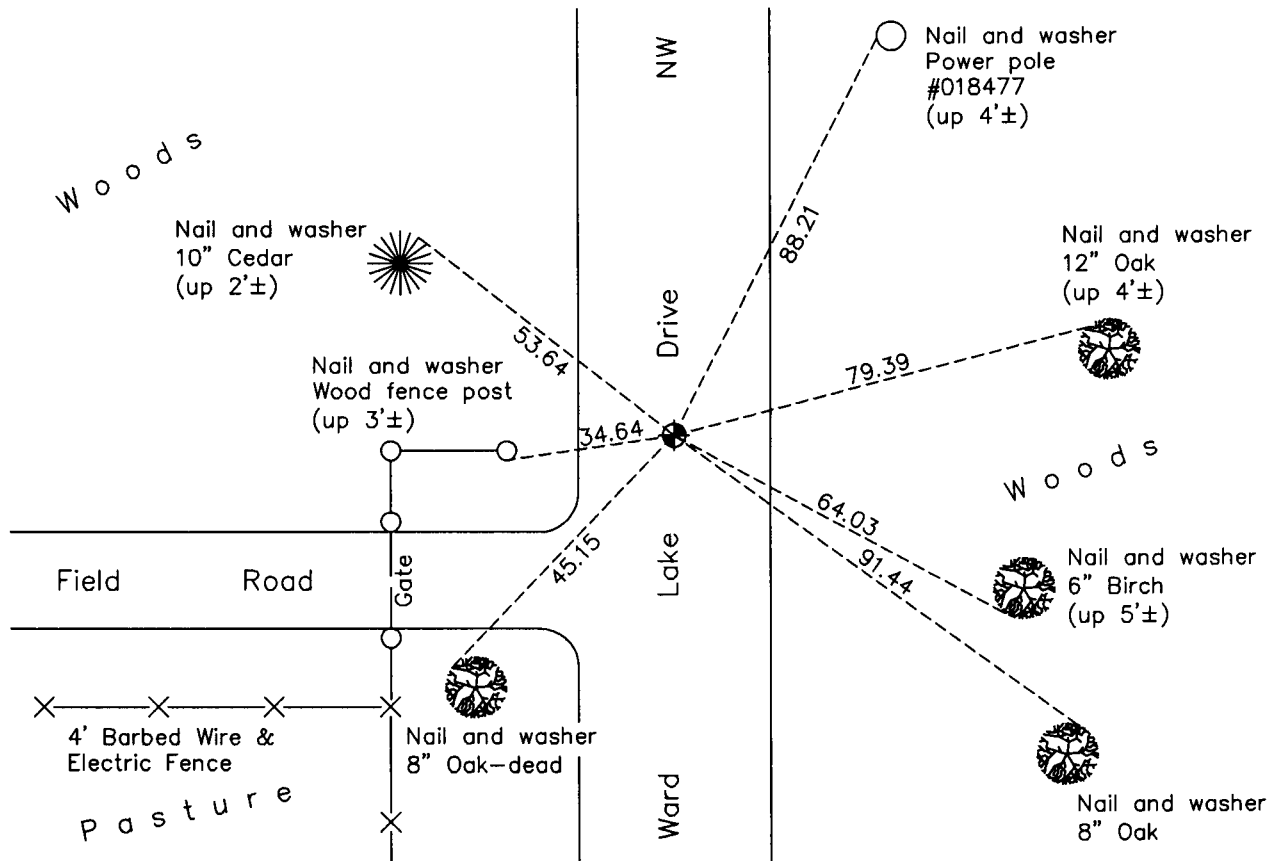
Southeast Corner of Sec. 11 Township 32 Range 24

On the 31st day of August, 1962, the described corner was evidenced by area resurvey

and to perpetuate the location of said corner, at the exact location thereof, a permanent marker was placed consisting of a cast iron monument

AND on the 13th day of October, 2010, said permanent marker was found up 0.02'± and the ties were updated

Updated reference ties are as shown below.



N.A.D. 1983 Coordinates
(1996 Adjustment)

County Project Coordinates	
Northing	<u>185373.8574</u>
Easting	<u>495140.1800</u>
Date	<u>10/12/00</u>

Revision Date
4/21/11

I hereby certify that this United States public land survey monument record is correct and complete to the best of my knowledge and belief.

Larry D. Hoium Date 4/21/11

Larry D. Hoium, Anoka County Surveyor

Minnesota License Number 18165

HISTORY OF GOVERNMENT CORNER

Page No. 39

County of Anoka

State of Minnesota

Southeast Corner of Sec. 11 Township 32 Range 24

CORNER HISTORY:

August 31, 1962 - Set cast iron monument down 0.3'± using area resurvey and established ties to monument.

August 14, 1964 - Found cast iron monument and updated ties.

May 29, 1968 - Found cast iron monument and updated ties.

June 21, 1972 - Found cast iron monument and updated ties.

May 28, 1976 - Found cast iron monument and updated ties.

May 31, 1979 - Found cast iron monument and updated ties.

June 17, 1982 - Found cast iron monument and updated ties.

June 3, 1985 - Found cast iron monument and updated ties.

August 15, 1988 - Found cast iron monument and updated ties.

July 11, 1989 - Replaced cast iron monument with a 1/2" iron pipe with "Anoka County Surveyor" cap. Updated ties.

August 21, 1989 - Replaced 1/2" iron pipe with a cast iron monument. Updated ties.

July 21, 1993 - Found cast iron monument and updated ties.

October 12, 2000 - Found cast iron monument and established NAD 1983 (1996 Adjustment) Anoka County Project Coordinates by Static GPS methods. Updated ties.

October 13, 2010 - Found cast iron monument up 0.02'± and updated ties.