

# CERTIFICATE OF LOCATION OF GOVERNMENT CORNER

County of Anoka

State of Minnesota

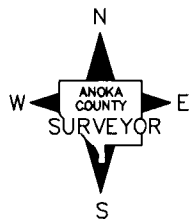
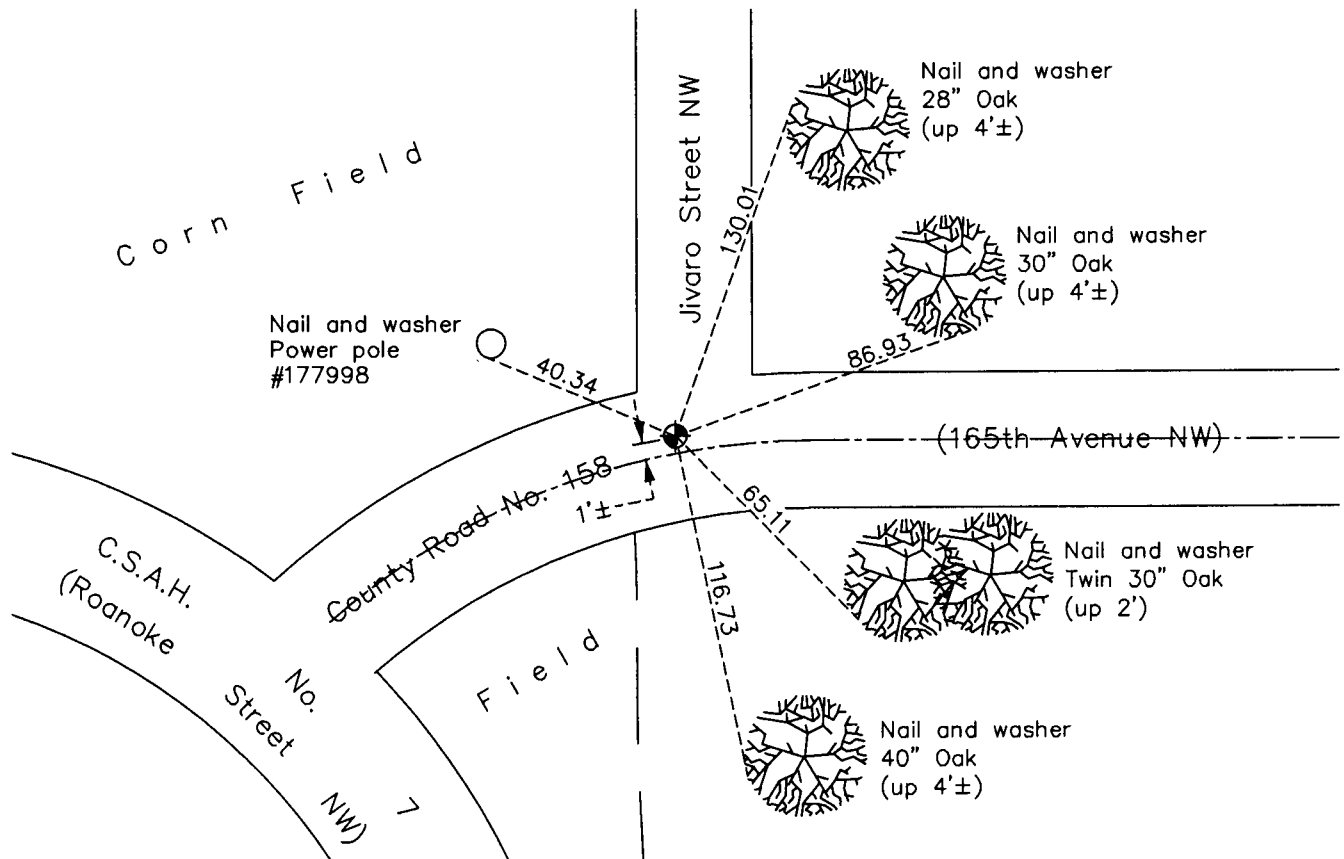
## North 1/4 Corner of Sec. 18 Township 32 Range 24

On the 2nd day of November, 1961, the described corner was evidenced by area resurvey

and to perpetuate the location of said corner, at the exact location thereof, a permanent marker was placed consisting of a cast iron monument

AND on the 27th day of October, 2010, said permanent marker was found down 0.1'± and the ties were updated

Updated reference ties are as shown below.



Revision Date  
4/26/11

N.A.D. 1983 Coordinates  
(1996 Adjustment)

County Project Coordinates	
Northing	185662.8590
Easting	471490.8010
Date	10/04/00

I hereby certify that this United States public land survey monument record is correct and complete to the best of my knowledge and belief.

*Larry D. Hoium* Date 4/26/11

Larry D. Hoium, Anoka County Surveyor

Minnesota License Number 18165

# HISTORY OF GOVERNMENT CORNER

County of Anoka

State of Minnesota

## North 1/4 Corner of Sec. 18 Township 32 Range 24

### **CORNER HISTORY:**

November 2, 1961 - Set cast iron monument down 0.4'± and established ties to monument.

August 25, 1964 - Found cast iron monument and updated ties.

July 8, 1968 - Found cast iron monument and updated ties.

June 28, 1972 - Found cast iron monument and updated ties.

June 1, 1976 - Found cast iron monument and updated ties.

October 2, 1978 - Found cast iron monument flush with the surface and updated ties.

June 4, 1979 - Found cast iron monument and updated ties.

June 21, 1982 - Found cast iron monument and updated ties.

May 29, 1985 - Found cast iron monument and updated ties.

April 28, 1987 - Found cast iron monument and updated ties.

July 28, 1988 - Found cast iron monument and updated ties.

July 15, 1993 - Found cast iron monument and updated ties.

October 4, 2000 - Found cast iron monument and established NAD 1983 ( 1996 Adjustment) Anoka County Project Coordinates by Static GPS methods. Updated ties.

October 27, 2010 - Found cast iron monument down 0.1'± and updated ties.