

# CERTIFICATE OF LOCATION OF GOVERNMENT CORNER

County of Anoka

State of Minnesota

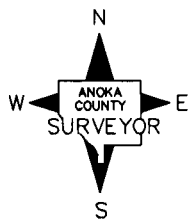
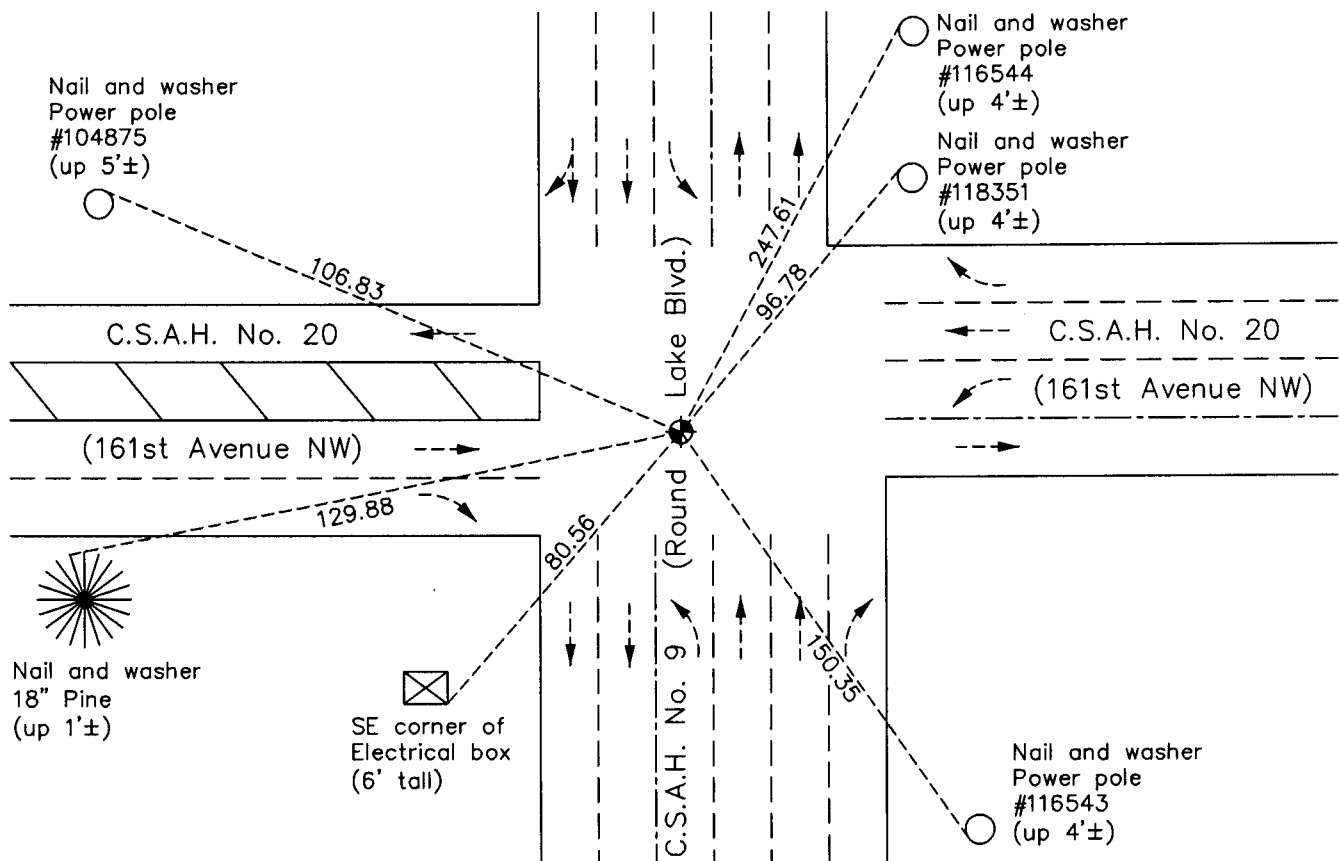
## West 1/4 Corner of Sec. 16 Township 32 Range 24

On the 22nd day of August, 1964, the described corner was evidenced by a 1/2" iron pipe from N.C. Hoium ties

and to perpetuate the location of said corner, at the exact location thereof, a permanent marker was placed consisting of a cast iron monument

AND on the 10th day of December, 2010, said permanent marker was found flush with the surface and the ties were updated

Updated reference ties are as shown below.



Revision Date  
4/27/11

N.A.D. 1983 Coordinates  
(1996 Adjustment)

County Project Coordinates	
Northing	182939.4741
Easting	479368.0930
Date	10/02/00

I hereby certify that this United States public land survey monument record is correct and complete to the best of my knowledge and belief.

*Larry D. Hoium* Date 4/27/11

Larry D. Hoium, Anoka County Surveyor  
Minnesota License Number 18165

# HISTORY OF GOVERNMENT CORNER

Page No. 52

County of Anoka

State of Minnesota

## West 1/4 Corner of Sec. 16 Township 32 Range 24

### **CORNER HISTORY:**

Date unknown - N.C. Hoium set iron pipe on a straight line and equal distance between the northwest corner and the southwest corner of Section 16 and established ties to monument.

August 22, 1964 - Found 1/2" iron pipe down 0.1' using N.C. Hoium ties. Established ties to monument.

June 3, 1965 - Replaced 1/2" iron pipe with a cast iron monument. Updated ties.

July 9, 1968 - Found cast iron monument and updated ties.

June 23, 1972 - Found cast iron monument and updated ties. Set P.K. nails north and east of monument.

Date unknown - Found cast iron monument and updated ties.

June 1, 1976 - Found cast iron monument and updated ties.

October 2, 1980 - Set cast iron monument after road construction and tied into section corners to north and south. Updated ties.

June 23, 1982 - Found cast iron monument and updated ties.

May 29, 1985 - Found cast iron monument and updated ties.

August 9, 1988 - Found cast iron monument and updated ties.

July 15, 1993 - Found cast iron monument and updated ties.

July 7, 1996 - Replaced cast iron monument with a new cast iron monument. Updated ties.

October 2, 2000 - Found cast iron monument and established NAD 1983 ( 1996 Adjustment) Anoka County Project Coordinates by Static GPS methods. Updated ties.

July 18, 2001 - Set construction ties and removed cast iron monument prior to road construction. Date reset after construction is unknown.

December 10, 2010 - Found cast iron monument flush with the surface and updated ties.