

# CERTIFICATE OF LOCATION OF GOVERNMENT CORNER

County of Anoka

State of Minnesota

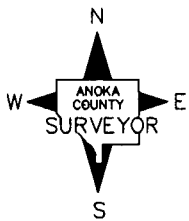
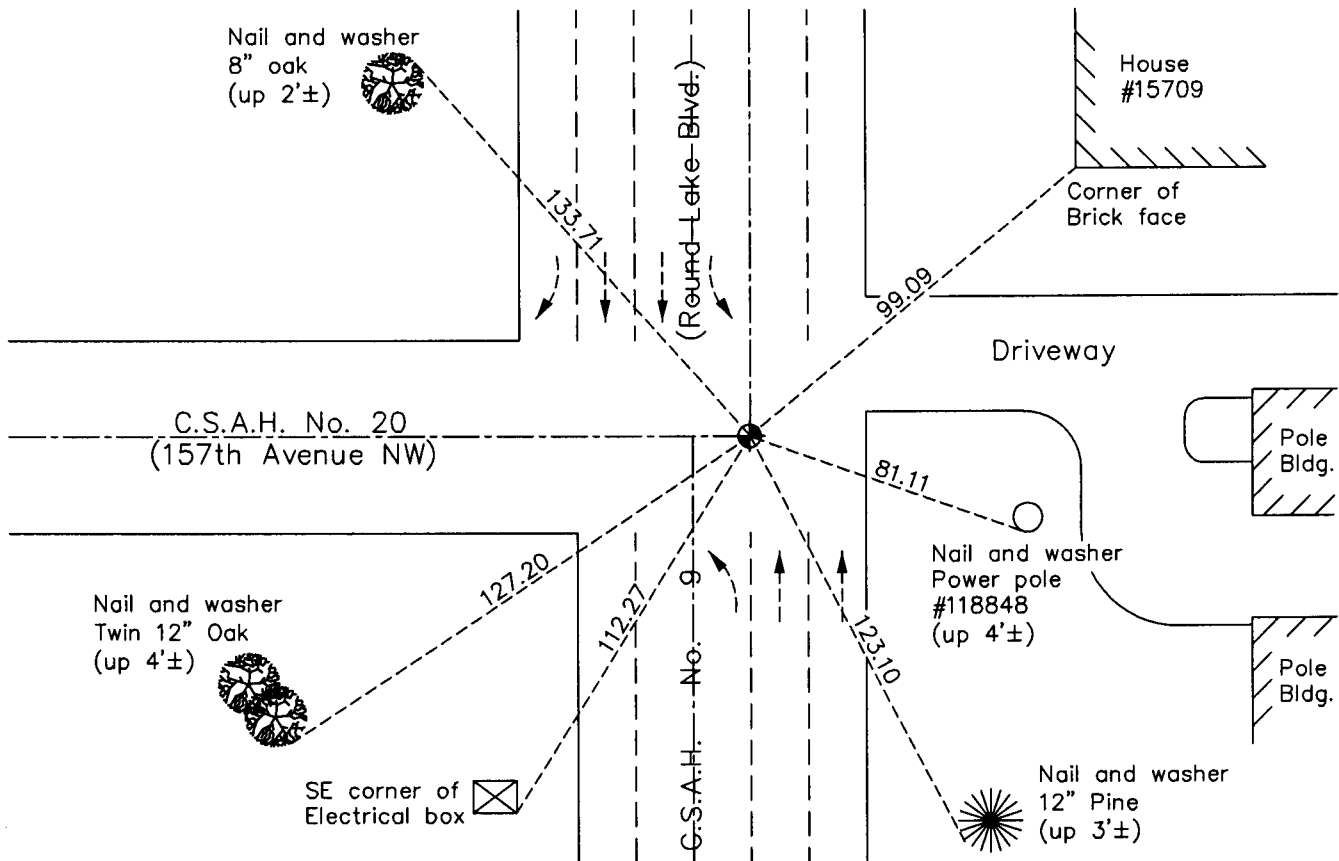
## Southwest Corner of Sec. 16 Township 32 Range 24

On the 7th day of June, 1962, the described corner was evidenced by a granite monument

and to perpetuate the location of said corner, at the exact location thereof, a permanent marker was placed consisting of a cast iron monument

AND on the 10th day of December, 2010, said permanent marker was found flush with the surface and the ties were updated

Updated reference ties are as shown below.



Revision Date  
5/03/11

N.A.D. 1983 Coordinates  
(1996 Adjustment)

County Project Coordinates	
Northing	<u>180302.9553</u>
Easting	<u>479390.7218</u>
Date	<u>10/09/00</u>

I hereby certify that this United States public land survey monument record is correct and complete to the best of my knowledge and belief.

*Larry D. Hoium* Date 5/03/11

Larry D. Hoium, Anoka County Surveyor

Minnesota License Number 18165

# HISTORY OF GOVERNMENT CORNER

County of Anoka

State of Minnesota

## Southwest Corner of Sec. 16 Township 32 Range 24

### **CORNER HISTORY:**

June 7, 1962 - Found granite monument missing. It had been removed during road construction. Reset position of corner with a cast iron monument using ties.

August 22, 1964 - Found cast iron monument and updated ties.

July 10, 1968 - Found cast iron monument and updated ties.

June 28, 1972 - Found cast iron monument and updated ties.

June 2, 1976 - Found cast iron monument and updated ties.

July 27, 1978 - Found cast iron monument and updated ties.

June 5, 1979 - Found cast iron monument and updated ties.

October 2, 1980 - Reset cast iron monument after road construction and verified position using distances to corners north and south. Updated ties.

June 25, 1982 - Found cast iron monument and updated ties.

May 28, 1985 - Found cast iron monument and updated ties.

August 9, 1988 - Found cast iron monument and updated ties.

July 19, 1993 - Found cast iron monument and updated ties.

April 16, 1999 - Found cast iron monument and updated ties.

October 9, 2000 - Found cast iron monument and established NAD 1983 ( 1996 Adjustment) Anoka County Project Coordinates by Static GPS methods. Updated ties.

July 3, 2001 - Set construction ties and removed cast iron monument prior to road construction.

December 10, 2010 - Found cast iron monument flush with surface and updated ties.