

CERTIFICATE OF LOCATION OF GOVERNMENT CORNER

County of Anoka

State of Minnesota

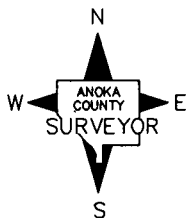
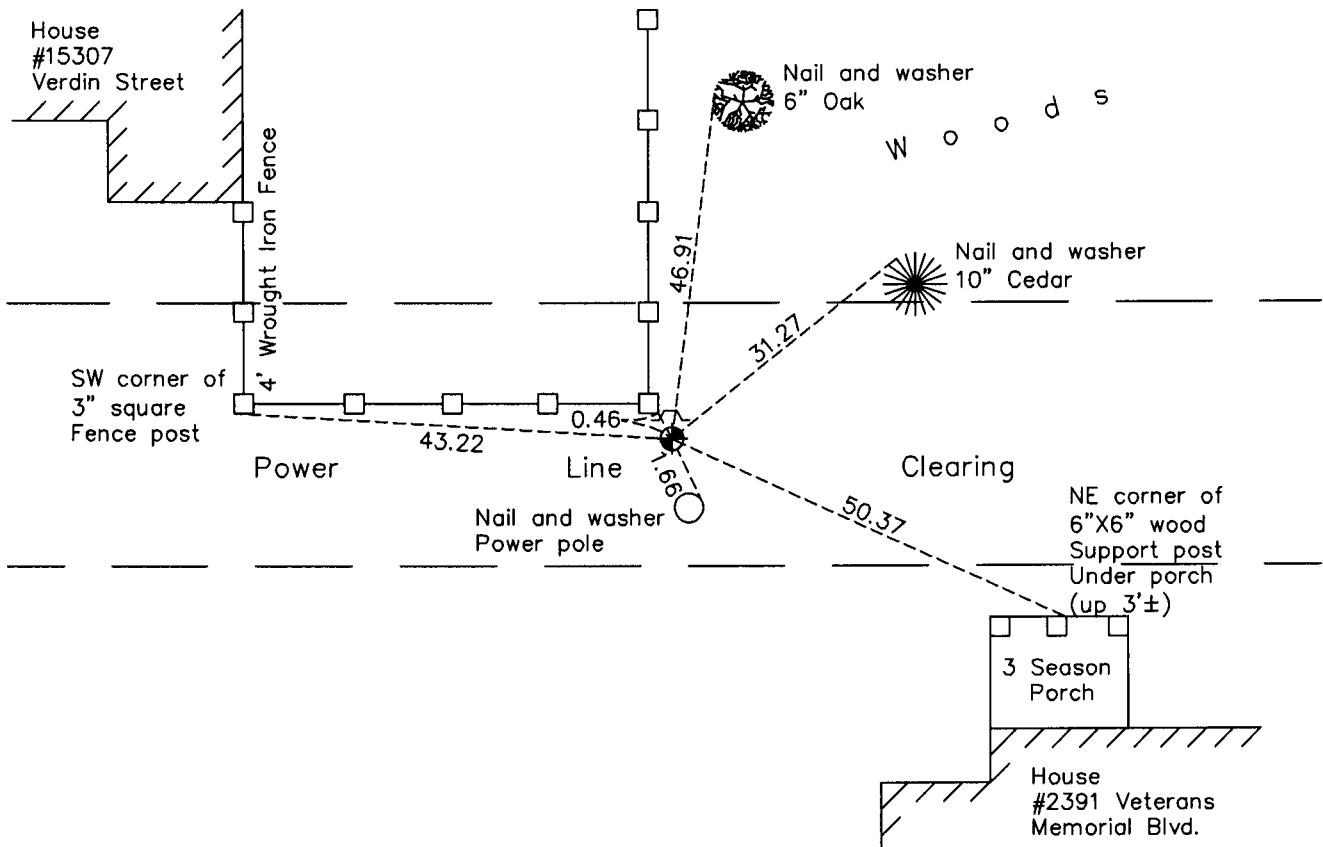
West 1/4 Corner of Sec. 22 Township 32 Range 24

On the 5th day of August, 1968, the described corner was evidenced by a 3" x 5" fieldstone and 3/4" iron pipe

and to perpetuate the location of said corner, at the exact location thereof, a permanent marker was placed consisting of a cast iron monument

AND on the 5th day of October, 2010, said permanent marker was found flush with the surface and the ties were updated. A sign and post was set on the north side of monument.

Updated reference ties are as shown below.



Revision Date

5/11/11

N.A.D. 1983 Coordinates
(1996 Adjustment)

County Project Coordinates	
Northing	<u>177751.1978</u>
Easting	<u>484652.5229</u>
Date	<u>2/06/01</u>

I hereby certify that this United States public land survey monument record is correct and complete to the best of my knowledge and belief.

Larry D. Hoium Date 5/11/11

Larry D. Hoium, Anoka County Surveyor

Minnesota License Number 18165

HISTORY OF GOVERNMENT CORNER

Page No. 73

County of Anoka

State of Minnesota

West 1/4 Corner of Sec. 22 Township 32 Range 24

CORNER HISTORY:

August 9, 1960 - Found stone monument with iron pipe 0.20' south of center of stone. Established ties to monument. The stone is a 3" X 5" field stone.

August 19, 1964 - Found stone monument with iron pipe and updated ties.

July 24, 1968 - Could not find stone monument. Found 1" iron pipe with pin in end.

August 5, 1968 - Replaced 3" X 5" stone monument (previously unable to find) and 3/4" iron pipe with a cast iron monument set up 0.1'±. Verified position of monument using ties. Updated ties.

June 3, 1976 - Found cast iron monument and updated ties.

June 6, 1979 - Found cast iron monument and updated ties.

June 28, 1982 - Found cast iron monument and updated ties.

August 12, 1988 - Found cast iron monument and updated ties.

July 21, 1993 - Found cast iron monument and updated ties.

February 6, 2001 - Found cast iron monument and established NAD 1983 (1996 Adjustment) Anoka County Project Coordinates by Static GPS methods. Updated ties.

October 5, 2010 - Found cast iron monument flush with the surface and updated ties. Set sign and post on north side of monument.