

CERTIFICATE OF LOCATION OF GOVERNMENT CORNER

County of Anoka

State of Minnesota

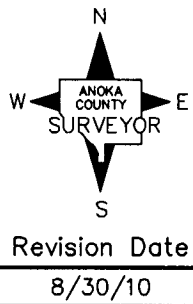
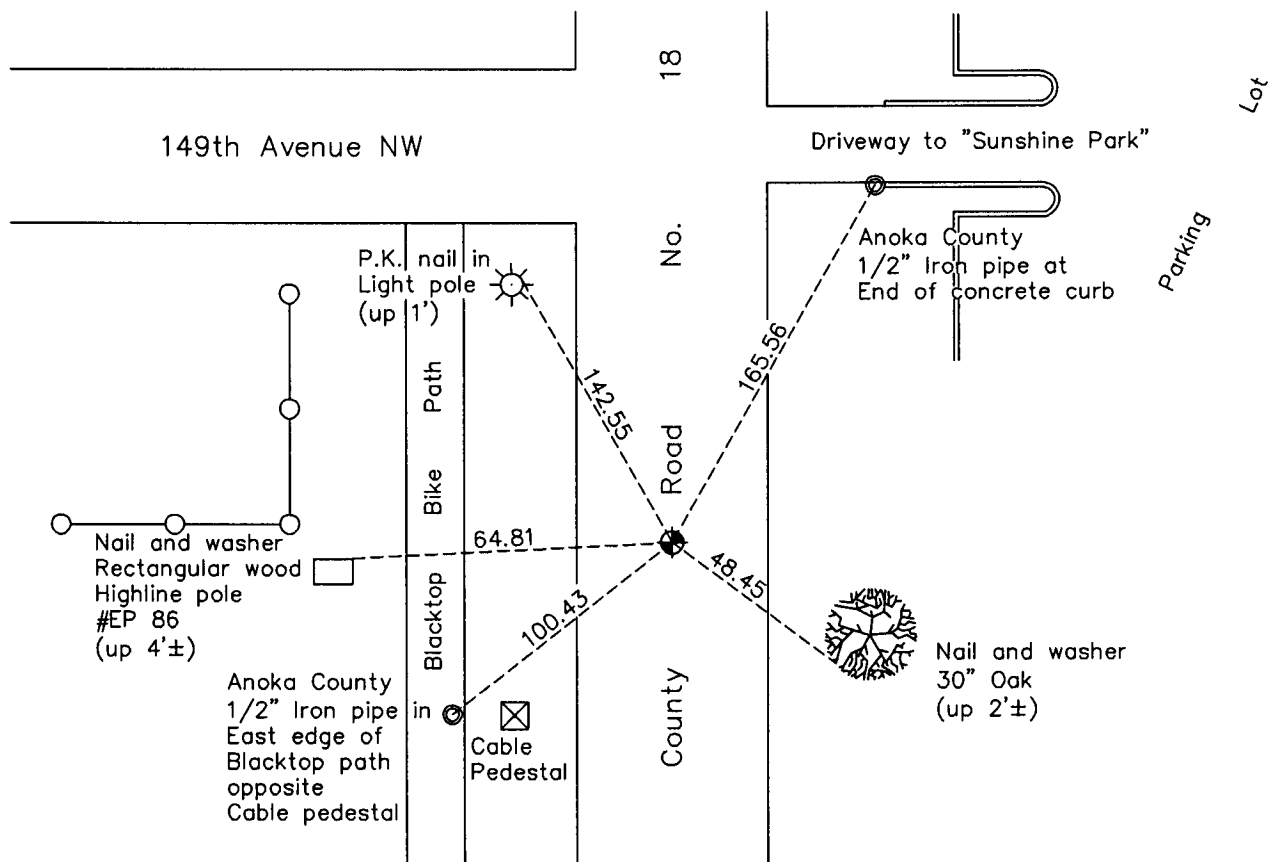
North $\frac{1}{4}$ Corner of Sec. 27 Township 32 Range 24

On the 11th day of June, 1959, the described corner was evidenced by a $\frac{1}{4}$ " solid iron rod

and to perpetuate the location of said corner, at the exact location thereof, a permanent marker was placed consisting of a cast iron monument

AND on the 15th day of July, 2010, said permanent marker was found, raised to surface after construction and the ties were updated

Updated reference ties are as shown below.



N.A.D. 1983 Coordinates
(1996 Adjustment)

County Project Coordinates	
Northing	175059.9222
Easting	487219.3196
Date	7/31/00

I hereby certify that this United States public land survey monument record is correct and complete to the best of my knowledge and belief.

Date 8/30/10

Larry D. Hoium, Anoka County Surveyor
 Minnesota License Number 18165

HISTORY OF GOVERNMENT CORNER

County of Anoka

State of Minnesota

North 1/4 Corner of Sec. 27 Township 32 Range 24

CORNER HISTORY:

June 11, 1959 - Found 1/4" rod flush with the surface. Established ties to monument.

August 20, 1964 - Found 1/4" rod and updated ties.

July 26, 1968 - Replaced 1/4" rod with a cast iron monument set flush with the surface. Set P.K. nails 2.00' north and east of monument and updated ties.

June 30, 1972 - Found cast iron monument and updated ties.

June 7, 1976 - Found cast iron monument and updated ties.

June 6, 1979 - Found cast iron monument and updated ties.

June 25, 1982 - Found cast iron monument and updated ties.

June 6, 1985 - Found cast iron monument and updated ties.

July 29, 1988 - Found cast iron monument and updated ties.

July 21, 1993 - Found cast iron monument and updated ties.

October 4, 1993 - Found cast iron monument and updated ties.

July 31, 2000 - Found cast iron monument and established NAD 1983 (1996 Adjustment) Anoka County Project Coordinates by Static GPS methods. Updated ties.

April 30, 2010 - Updated ties prior to road construction. Left cast iron monument in place.

July 15, 2010 - Added spacer/s and replaced top of cast iron monument. Monument is flush with surface. Updated ties.