

CERTIFICATE OF LOCATION OF GOVERNMENT CORNER

County of Anoka

State of Minnesota

Witness Corner of Sec. 20 Township 32 Range 24

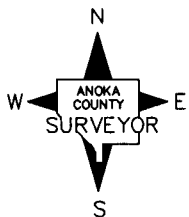
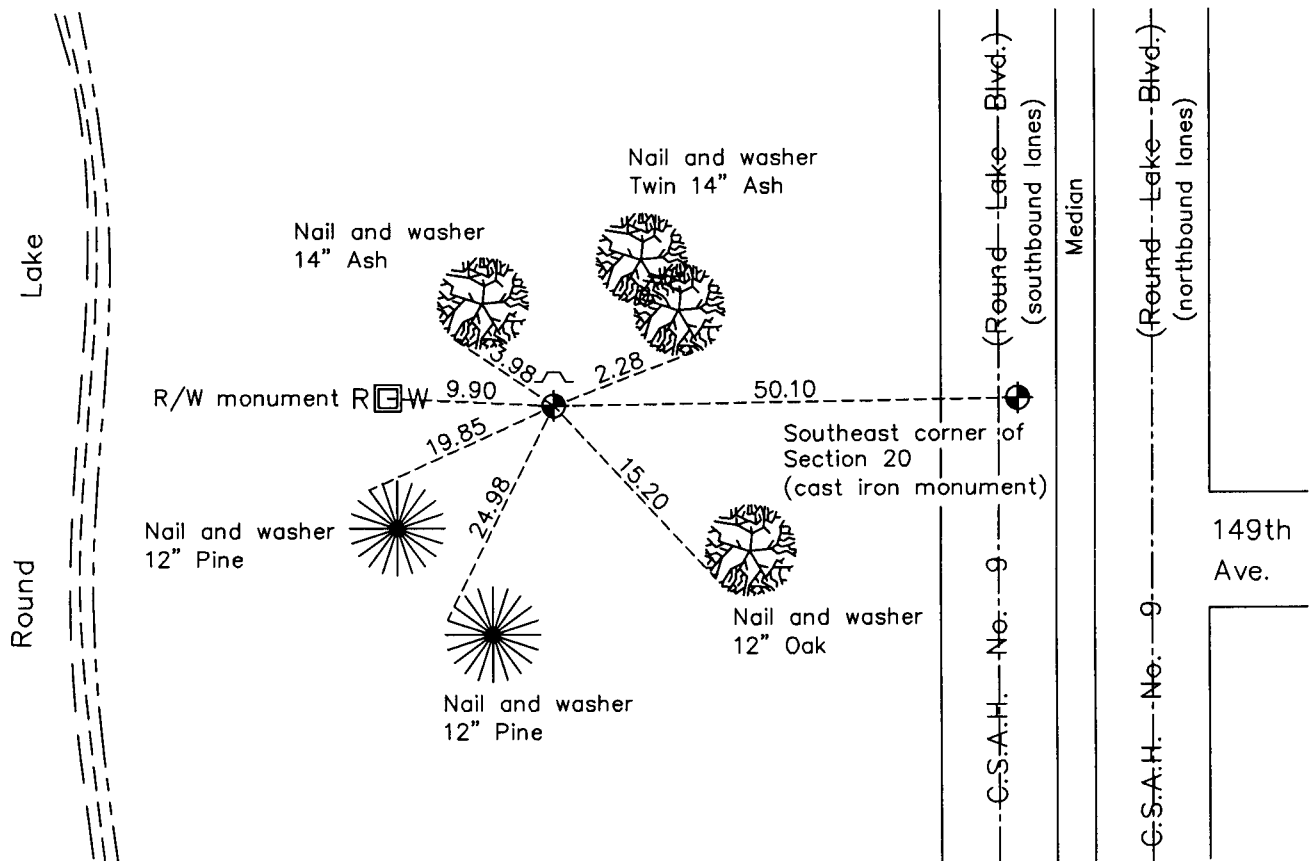
(East side of Round Lake)

On the 2nd day of July, 1963, the described corner was evidenced by area resurvey

and to perpetuate the location of said corner, at the exact location thereof, a permanent marker was placed consisting of a cast iron monument with a sign and post on the north side

AND on the ___ day of _____, _____, said permanent marker was _____

Updated reference ties are as shown below.



Revision Date

12/10/10

N.A.D. 1983 Coordinates
(1996 Adjustment)

County Project Coordinates	
Northing	N/A
Easting	_____
Date	_____

I hereby certify that this United States public land survey monument record is correct and complete to the best of my knowledge and belief.

Larry D. Hoium Date 12/10/10

Larry D. Hoium, Anoka County Surveyor

Minnesota License Number 18165

HISTORY OF GOVERNMENT CORNER

County of Anoka

State of Minnesota

Witness Corner of Sec. 20 Township 32 Range 24
(East side of Round Lake)

CORNER HISTORY:

July 2, 1963 - Set cast iron monument up 0.2'± using area resurvey and established ties to monument.

August 25, 1964 - Found cast iron monument and updated ties.

July 22, 1968 - Found cast iron monument and updated ties.

July 5, 1972 - Found cast iron monument and updated ties.

June 8, 1976 - Found cast iron monument and updated ties.

June 21, 1982 - Found cast iron monument and updated ties.

May 28, 1985 - Found cast iron monument and updated ties.

August 10, 1988 - Found cast iron monument with sign and post on north side (date set unknown) and updated ties.

July 19, 1993 - Found cast iron monument and updated ties.