

CERTIFICATE OF LOCATION OF GOVERNMENT CORNER

County of Anoka

State of Minnesota

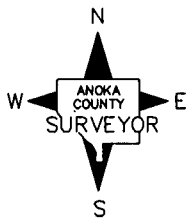
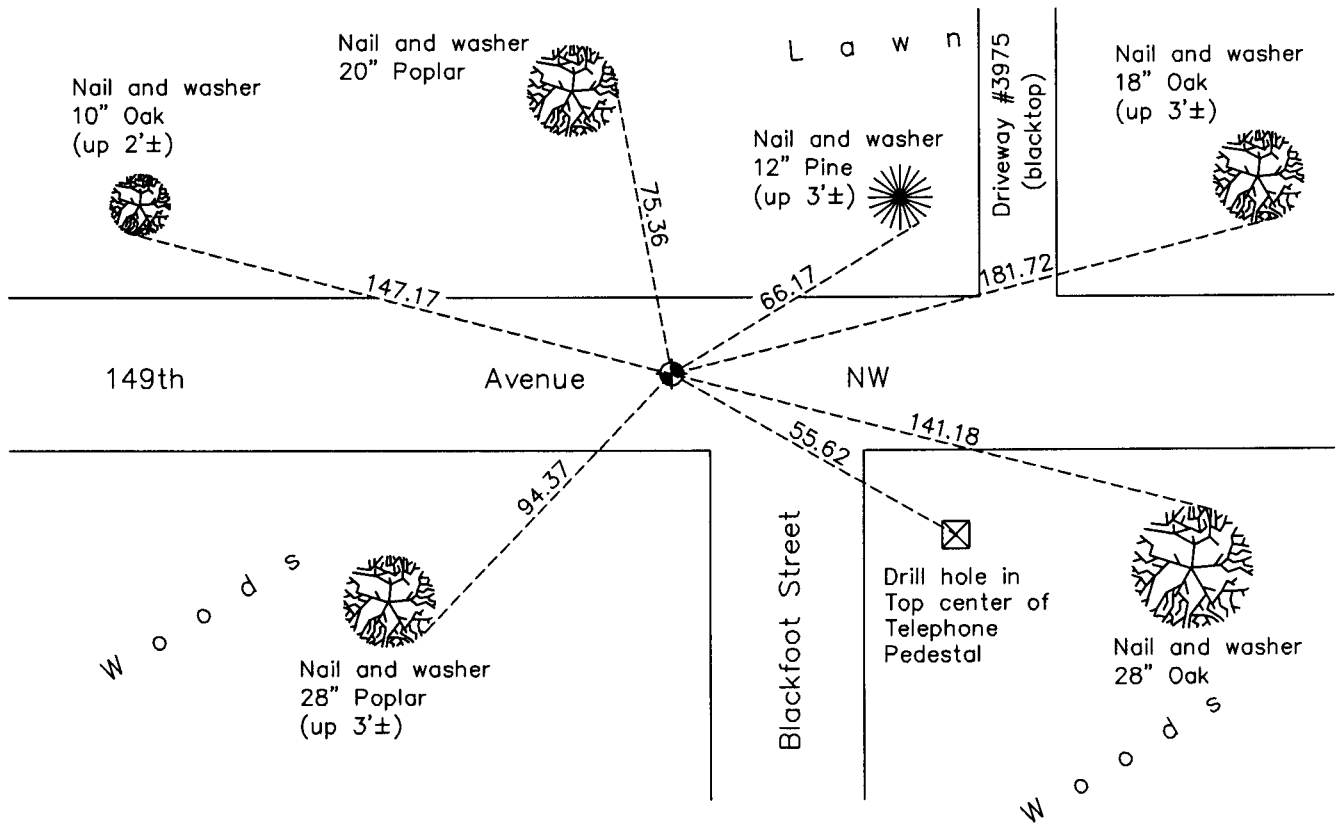
Southeast Corner of Sec. 19 Township 32 Range 24

On the 1st day of July, 1963, the described corner was evidenced by area resurvey

and to perpetuate the location of said corner, at the exact location thereof, a permanent marker was placed consisting of a cast iron monument

AND on the 29th day of October, 2010, said permanent marker was found flush with the surface and the ties were updated

Updated reference ties are as shown below.



Revision Date

5/24/11

N.A.D. 1983 Coordinates
(1996 Adjustment)

County Project Coordinates	
Northing	<u>175121.0787</u>
Easting	<u>474048.5245</u>
Date	<u>12/15/00</u>

I hereby certify that this United States public land survey monument record is correct and complete to the best of my knowledge and belief.

Larry D. Hoium Date 5/24/11

Larry D. Hoium, Anoka County Surveyor

Minnesota License Number 18165

HISTORY OF GOVERNMENT CORNER

County of Anoka

State of Minnesota

Southeast Corner of Sec. 19 Township 32 Range 24

CORNER HISTORY:

July 1, 1963 - Set cast iron monument flush with the surface using area resurvey and established ties to monument.

August 25, 1964 - Replaced broken cast iron monument with a new cast iron monument set down 0.2'±. Updated ties.

July 22, 1968 - Found cast iron monument and updated ties.

July 5, 1972 - Found cast iron monument and updated ties.

June 3, 1976 - Found cast iron monument and updated ties.

August 17, 1977 - Reset cast iron monument using Lund Round Lake Estates plat after all ties and monument were removed for road construction. Updated ties.

June 7, 1979 - Found cast iron monument and updated ties.

June 30, 1982 - Found cast iron monument and updated ties.

August 19, 1988 - Reset cast iron monument and updated ties.

July 15, 1993 - Found cast iron monument and updated ties.

December 15, 2000 - Found cast iron monument and established NAD 1983 (1996 Adjustment) Anoka County Project Coordinates by Static GPS methods. Updated ties.

October 29, 2010 - Found cast iron monument flush with the surface and updated ties.