

# CERTIFICATE OF LOCATION OF GOVERNMENT CORNER

County of Anoka

State of Minnesota

## Witness Corner of Sec. 29 Township 32 Range 24

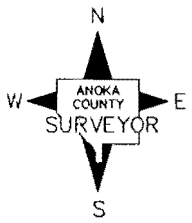
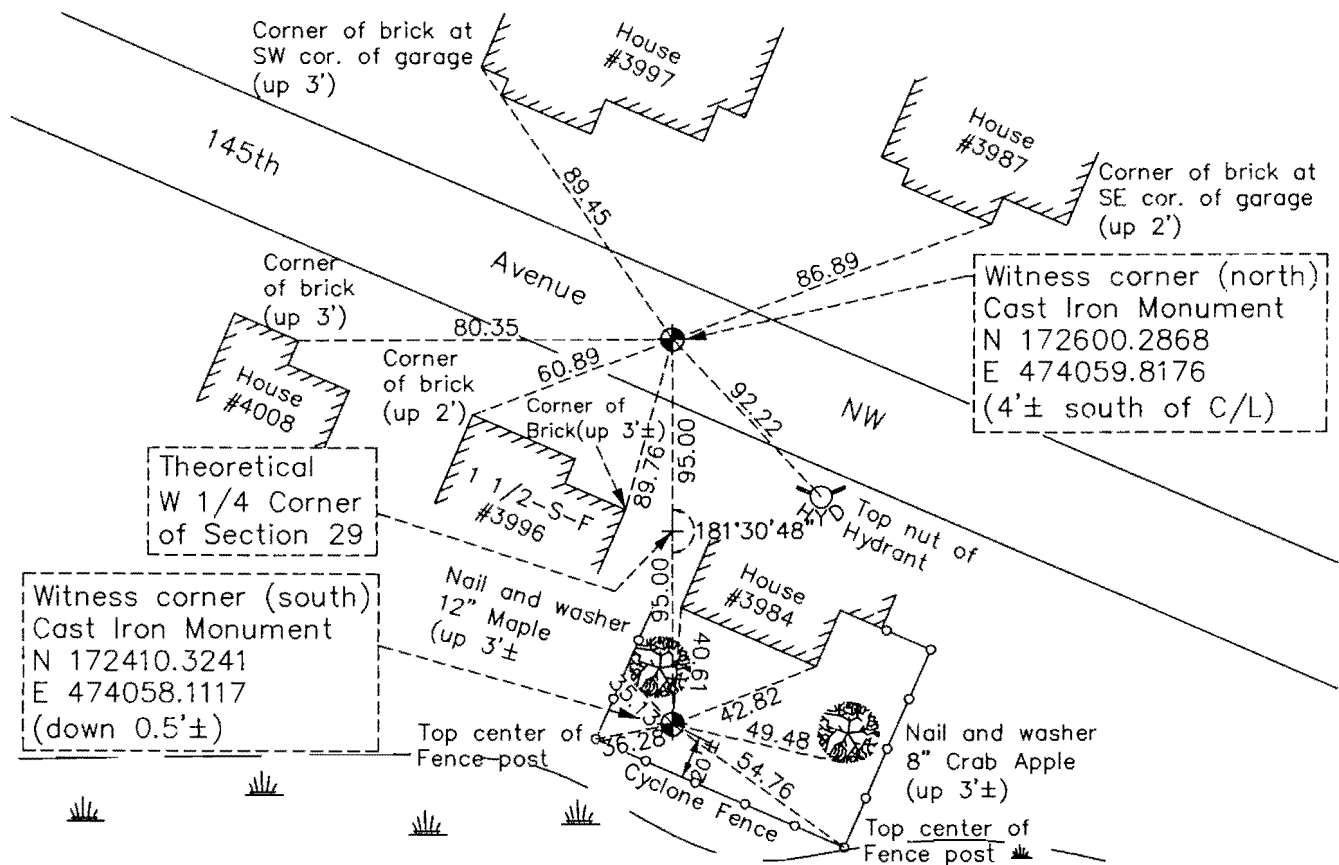
(Witness corners to W 1/4 Sec. 29)

On the 22nd day of September, 1992, the described corner was evidenced by area resurvey

and to perpetuate the location of said corner, at the exact location thereof, a permanent marker was placed consisting of cast iron monuments at both witness corners

AND on the 15th day of July, 2015, said permanent marker was replaced with a new cast iron monument after road construction and the ties were updated (north corner only)

Updated reference ties are as shown below.



Revision Date  
3/03/16

N.A.D. 1983 Coordinates  
(1996 Adjustment)

County Project Coordinates	
Northing	See above
Easting	_____
Date	_____

I hereby certify that this United States public land survey monument record is correct and complete to the best of my knowledge and belief.

*Larry D. Hoium* Date 3/03/16

Larry D. Hoium, Anoka County Surveyor  
Minnesota License Number 18165

# HISTORY OF GOVERNMENT CORNER

Page No. 94

County of Anoka

State of Minnesota

Witness Corner of Sec. 29 Township 32 Range 24  
(Witness corners to W 1/4 Sec. 29)

## **CORNER HISTORY:**

November 15, 1962 - Found 1" iron pipe down 1' in south rut of east-west trail across field. Set 3/4" iron pipe above 1" iron pipe and flush with trail. Also set steel snow fence post 1'± south of iron pipe. Established ties to monument.

November 12, 1964 - Replaced 1" iron pipe with a cast iron monument set flush with the surface. No ties available in the area. Set steel fence posts 0.5' east and west of monument.

July 19, 1972 - Found cast iron monument down 0.2'± and updated ties. Set steel fence post 1.5' north of monument.

June 9, 1976 - Found cast iron monument and updated ties.

June 11, 1979 - Found cast iron monument and updated ties.

June 21, 1982 - Found cast iron monument and updated ties.

August 11, 1988 - Found cast iron monument and updated ties.

September 22, 1992 and November 30, 1992 - Set cast iron monuments as Witness corners to the West Quarter corner of Section 29 using area resurvey. Position of W1/4 corner falls in house. Witness corners are north and south of W<sup>1</sup>/<sub>4</sub> corner. Set sign and post on south side of southerly monument and established ties to monuments.

July 30, 1993 - Found cast iron monument Witness corners and updated ties.

January 14, 2011 - Found cast iron monument Witness corners and updated ties. North Witness corner is 4'± south of centerline of 145th Avenue NW and south Witness corner is down 0.5'± and in backyard of House No. 3984.

May 12, 2015 - Set construction ties and removed cast iron monument prior to road construction ( north witness corner only) .

July 15, 2015 - Set cast iron monument flush with surface after road construction using construction ties and updated ties ( north witness corner only) .