

# CERTIFICATE OF LOCATION OF GOVERNMENT CORNER

County of Anoka

State of Minnesota

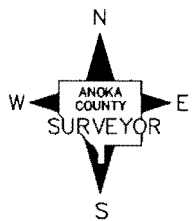
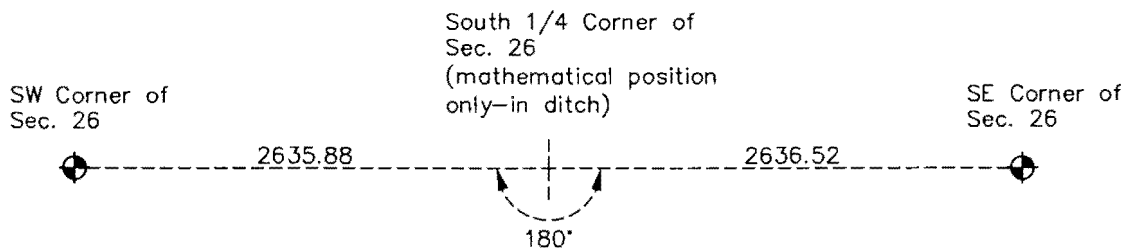
## South 1/4 Corner of Sec. 26 Township 32 Range 24

On the 19th day of January, 1978, the described corner was evidenced by area resurvey

and to perpetuate the location of said corner, at the exact location thereof, a permanent marker was placed consisting of a mathematical position. The corner could not be set because the position falls in a ditch.

AND on the \_\_\_ day of \_\_\_\_\_, \_\_\_\_\_, said permanent marker was \_\_\_\_\_

Updated reference ties are as shown below.



Revision Date

4/11/16

N.A.D. 1983 Coordinates  
(1996 Adjustment)

County Project Coordinates	
Northing	N/A
Easting	_____
Date	_____

I hereby certify that this United States public land survey monument record is correct and complete to the best of my knowledge and belief.

*Larry D. Hoium* Date 4/11/16

Larry D. Hoium, Anoka County Surveyor

Minnesota License Number 18165

# HISTORY OF GOVERNMENT CORNER

County of Anoka

State of Minnesota

## South 1/4 Corner of Sec. 26 Township 32 Range 24

### **CORNER HISTORY:**

February 7, 1963 - Found steel fence post set by N.C. Hoium. Replaced with 1" X 9' iron pipe up 3.5'± above water with 6" red and white painted bands.

July 18, 1972 - Found 1" iron pipe and updated ties.

November 9, 1973 - Unable to access monument due to water.

January 19, 1978 - Found 1" iron pipe missing. Creek had been dredged.

June 14, 1978 - Reset position of corner with 1-1/2" iron pipe up 1.5'± in center of Coon Creek using area resurvey and established ties to monument.

June 14, 1979 - Found 1-1/2" iron pipe and updated ties.

October 24, 1988 - Found 1-1/2" iron pipe missing. Unable to reset monument in corner position because of ditch. Position determined mathematically only.

April 11, 2016 - Proportionally adjusted distances using GPS locations of southwest corner and southeast corner of Section 26. Position determined mathematically only.