

CERTIFICATE OF LOCATION OF GOVERNMENT CORNER

County of Anoka

State of Minnesota

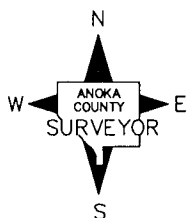
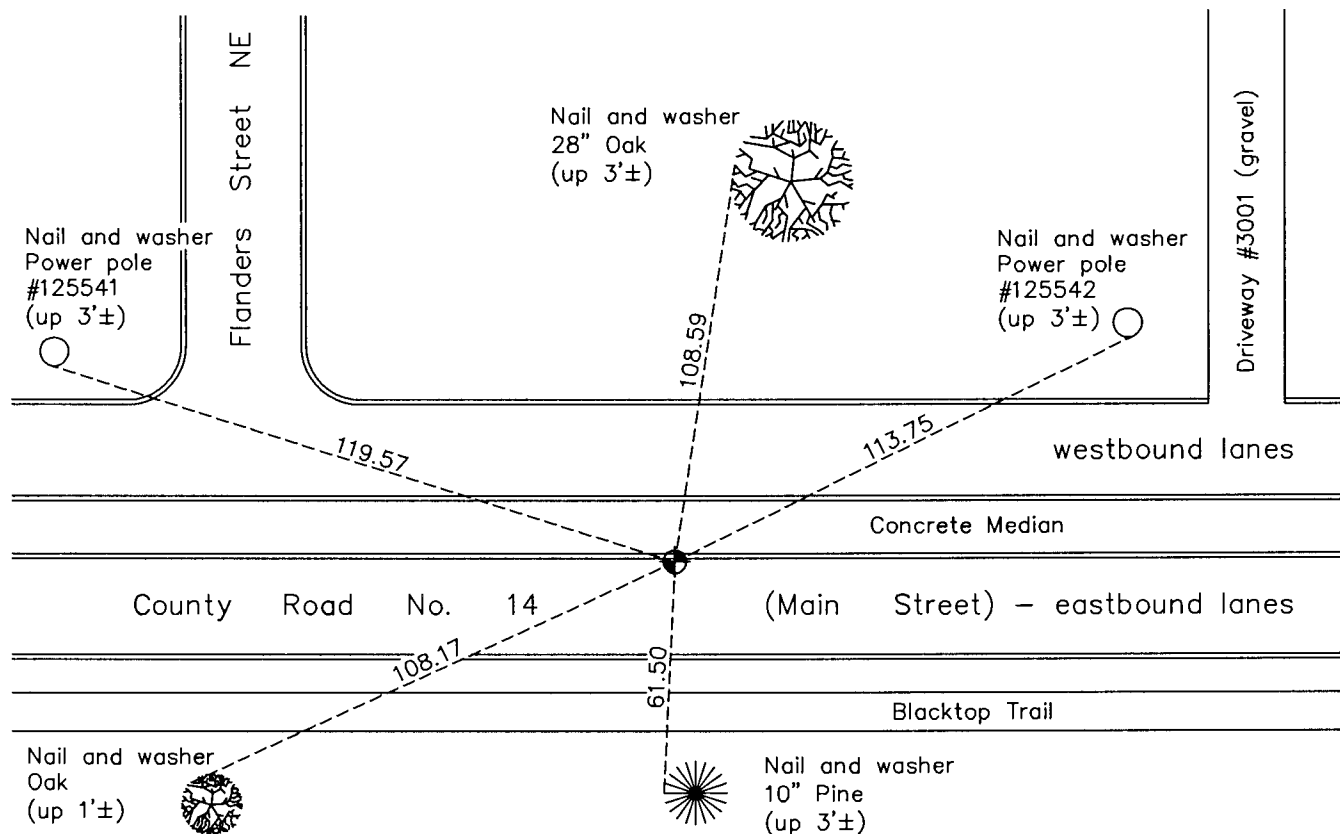
North $\frac{1}{4}$ Corner of Sec. 10 Township 31 Range 23

On the 20th day of November, 1964, the described corner was evidenced by area resurvey

and to perpetuate the location of said corner, at the exact location thereof, a permanent marker was placed consisting of a cast iron monument

AND on the 14th day of November, 2016, said permanent marker was replaced with a cast iron monument after road construction and the ties were updated. CIM falls in concrete curb.

Updated reference ties are as shown below.



Revision Date
12/22/16

N.A.D. 1983 Coordinates
(1996 Adjustment)

County Project Coordinates	
Northing	158978.4089
Easting	518845.0189
Date	9/03/98

I hereby certify that this United States public land survey monument record is correct and complete to the best of my knowledge and belief.

Larry D. Hoium Date 12/22/16

Larry D. Hoium, Anoka County Surveyor

Minnesota License Number 18165