

CERTIFICATE OF LOCATION OF GOVERNMENT CORNER

County of Anoka

State of Minnesota

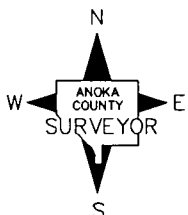
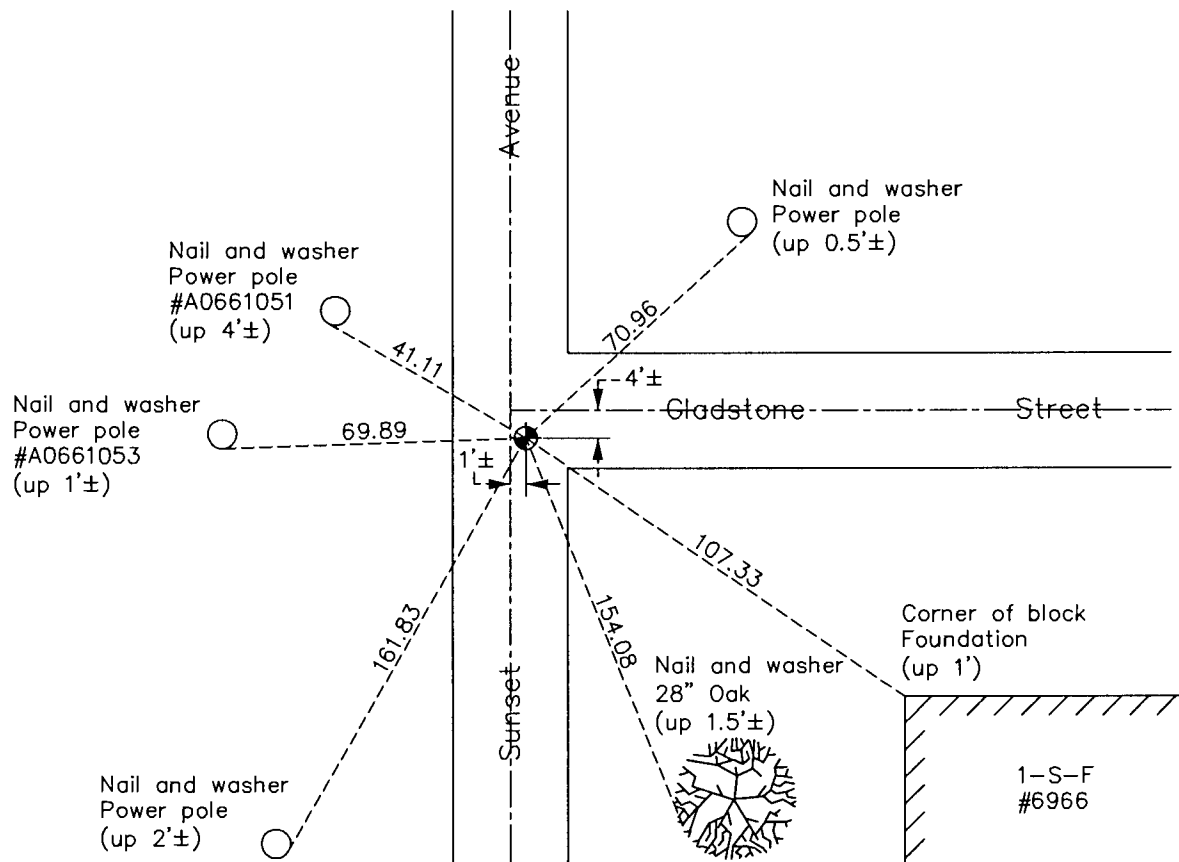
East 1/4 Corner of Sec. 24 Township 31 Range 23

On the 18th day of September, 1959, the described corner was evidenced by a bent iron pipe

and to perpetuate the location of said corner, at the exact location thereof, a permanent marker was placed consisting of a cast iron monument

AND on the 18th day of October, 2016, said permanent marker was reset after road construction and the ties were updated.

Updated reference ties are as shown below.



Revision Date
12/06/16

N.A.D. 1983 Coordinates
(1996 Adjustment)

County Project Coordinates	
Northing	145572.8399
Easting	531938.2376
Date	6/11/98

I hereby certify that this United States public land survey monument record is correct and complete to the best of my knowledge and belief.

Larry D. Hoium Date 12/06/16

Larry D. Hoium, Anoka County Surveyor
Minnesota License Number 18165