

CERTIFICATE OF LOCATION OF GOVERNMENT CORNER

County of Anoka

State of Minnesota

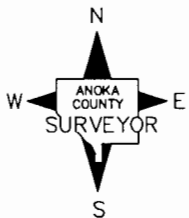
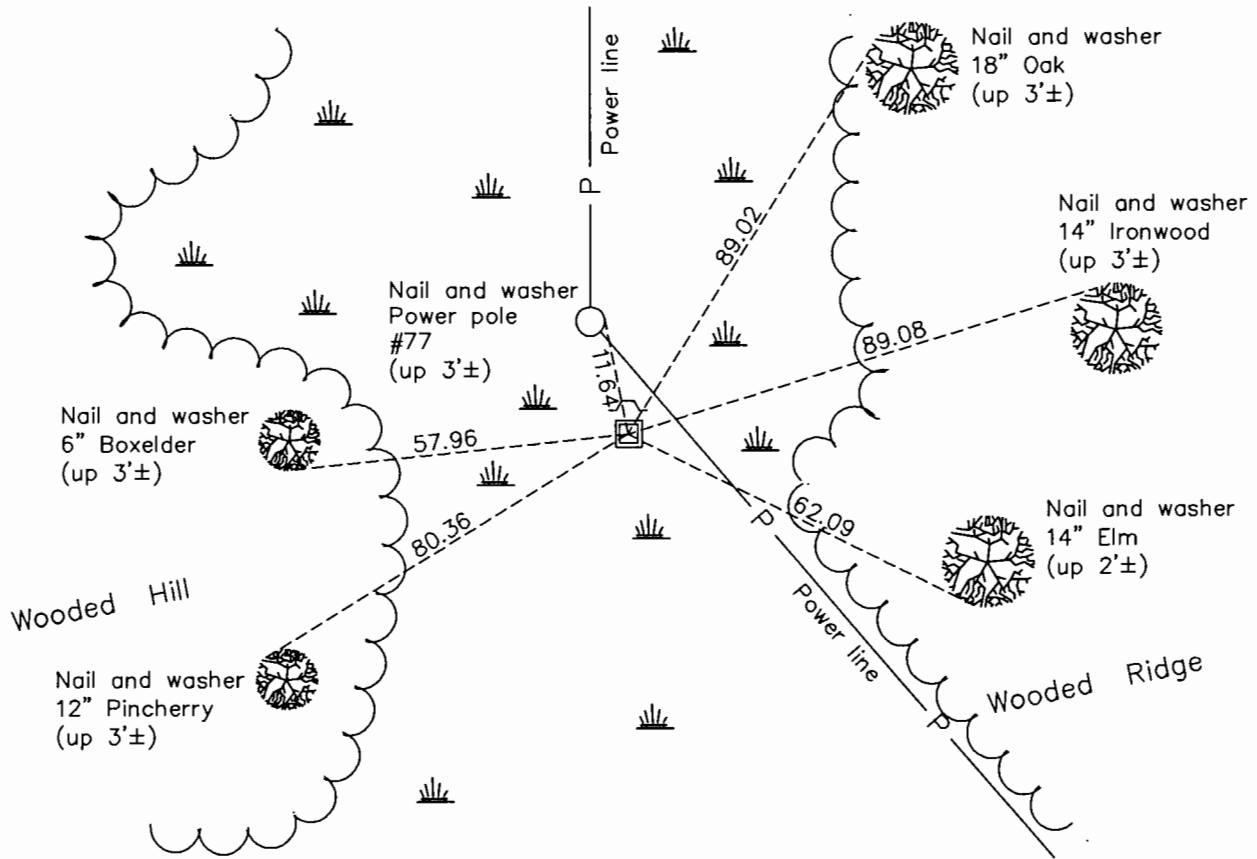
Northeast Corner of Sec. 8 Township 33 Range 22

On the 18th day of January, 1965, the described corner was evidenced by area resurvey

and to perpetuate the location of said corner, at the exact location thereof, a permanent marker was placed consisting of a red and white iron pipe

AND on the 26th day of February, 2016, said permanent marker was replaced with an 8' sq. steel Telespar monument up 1'± with punch mark in "Surveyors Cap" and sign & post on north side

Updated reference ties are as shown below.



Revision Date
12/28/16

N.A.D. 1983 Coordinates
(1996 Adjustment)

County Project Coordinates	
Northing	222204.7673
Easting	542486.5974
Date	4/12/04

I hereby certify that this United States public land survey monument record is correct and complete to the best of my knowledge and belief.

Larry D. Hoium Date 12/28/16

Larry D. Hoium, Anoka County Surveyor

Minnesota License Number 18165