

CERTIFICATE OF LOCATION OF GOVERNMENT CORNER

County of Anoka

State of Minnesota

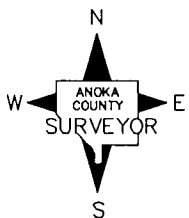
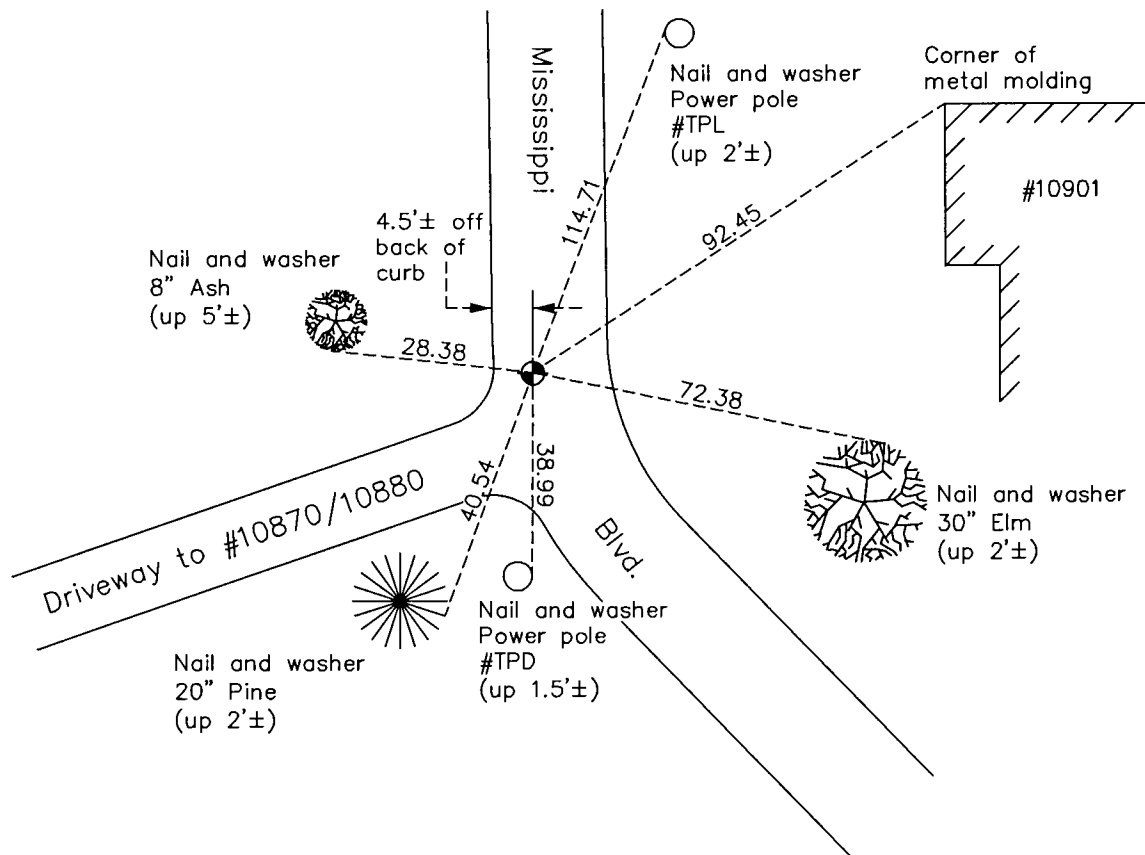
Northwest Corner of Sec. 21 Township 31 Range 24

On the 28th day of May, 1962, the described corner was evidenced by a 4"X4" concrete monument

and to perpetuate the location of said corner, at the exact location thereof, a permanent marker was placed consisting of a cast iron monument

AND on the 18th day of October, 2016, said permanent marker was replaced with a cast iron monument after road construction and the ties were updated.

Updated reference ties are as shown below.



Revision Date
12/06/16

N.A.D. 1983 Coordinates
(1996 Adjustment)

County Project Coordinates	
Northing	148608.6244
Easting	478901.4945
Date	8/06/01

I hereby certify that this United States public land survey monument record is correct and complete to the best of my knowledge and belief.

Larry D. Hoium Date 12/06/16

Larry D. Hoium, Anoka County Surveyor

Minnesota License Number 18165

HISTORY OF GOVERNMENT CORNER

Page No. 72

County of Anoka

State of Minnesota

Northwest Corner of Sec. 21 Township 31 Range 24

CORNER HISTORY:

May 26, 1944 - H.A. Cartwright found concrete monument set down 6". Established ties to monument.

March 23, 1961 - Caswell Engineering found concrete monument and updated ties.

May 28, 1962 - Found 4" square concrete monument down 0.5' with a 3/4" pinched iron pipe 2.2' west and 0.3' south of monument. Set 3/4" iron pipe on north side of and flush with monument. Updated ties.

July 14, 1966 - Found concrete monument and updated ties.

August 1, 1968 - Found concrete monument and 3/4" iron pipe 0.70' north. Updated and added ties prior to construction.

July 31, 1969 - Found concrete monument broken and leaning north with the iron pipe also leaning north. Set short cast iron monument on top of broken concrete monument set flush with the surface. Also set P.K. nails 2.00' north and east and updated ties.

July 12, 1974 - Found cast iron monument and updated ties.

June 23, 1977 - Found cast iron monument and updated ties.

June 28, 1980 - Found cast iron monument and updated ties.

August 14, 1990 - Found cast iron monument and updated ties.

August 22, 1994 - Found cast iron monument and updated ties.

April 14, 1997 - Set cast iron monument after construction and updated ties. Broken concrete monument is under cast iron monument.

August 6, 2001 - Found cast iron monument and established NAD 1983 (1996 Adjustment) Anoka County Project Coordinates by Static GPS methods. Updated ties.

March 9, 2010 - Found cast iron monument and updated ties.

April 22, 2015 - Found cast iron monument and updated ties.

July 21, 2016 - Set construction ties and removed cast iron monument and original concrete monument prior to road construction. Cast iron monument appeared to be leaning to the south which was verified by ties.

October 18, 2016 - Set cast iron monument flush with surface after road construction using ties. Construction ties were done using leaning position. Verified location of corner by Static GPS methods.