

CERTIFICATE OF LOCATION OF GOVERNMENT CORNER

County of Anoka

State of Minnesota

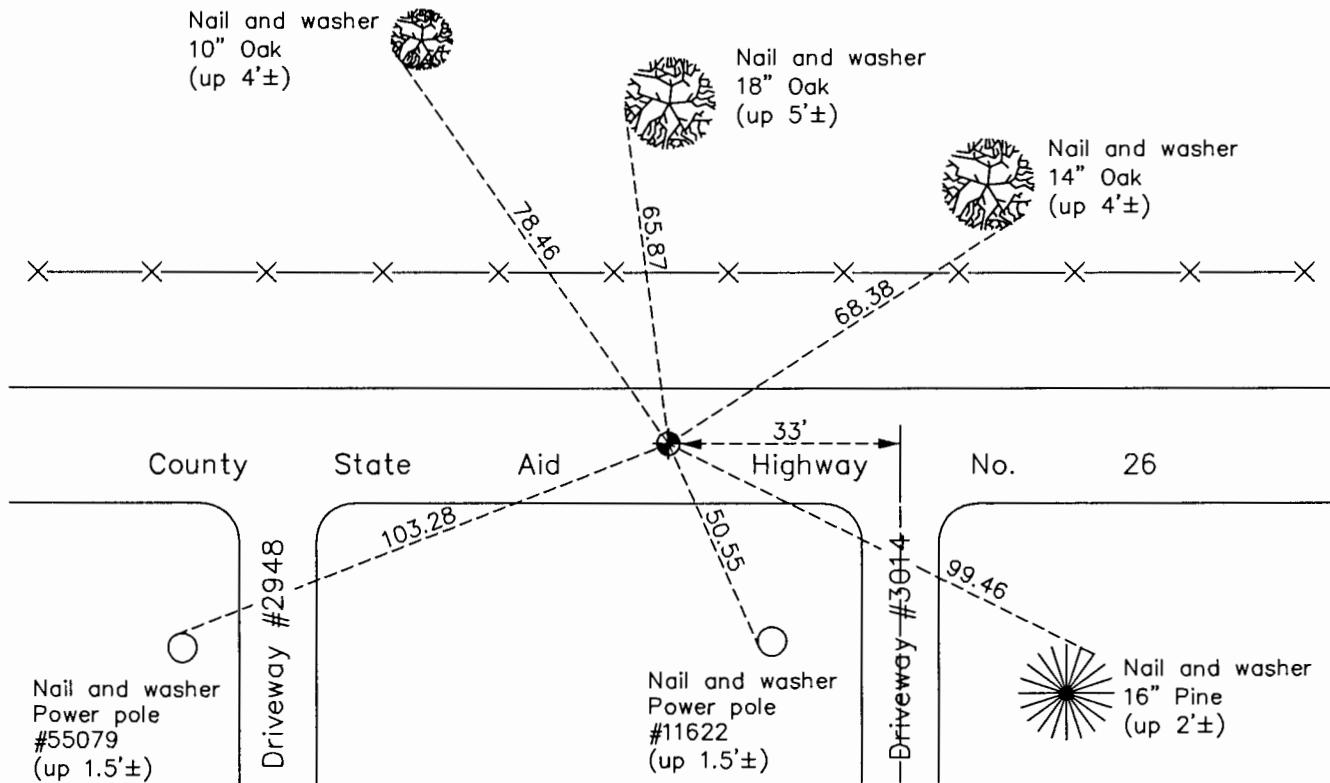
North $\frac{1}{4}$ Corner of Sec. 3 Township 33 Range 23

On the 29th day of November, 1963, the described corner was evidenced by area resurvey

and to perpetuate the location of said corner, at the exact location thereof, a permanent marker was placed consisting of a cast iron monument

AND on the day of October, 2016, said permanent marker was replaced with a cast iron monument after road construction and the ties were updated

Updated reference ties are as shown below.



N

 W ANOKA COUNTY SURVEYOR E
 S

Revision Date
12/12/16

N.A.D. 1983 Coordinates
(1996 Adjustment)

County Project Coordinates	
Northing	227567.2026
Easting	518831.9692
Date	3/26/02

I hereby certify that this United States public land survey monument record is correct and complete to the best of my knowledge and belief.

Larry D. Hoium Date 12/12/16

Larry D. Hoium, Anoka County Surveyor
 Minnesota License Number 18165