

CERTIFICATE OF LOCATION OF GOVERNMENT CORNER

County of Anoka

State of Minnesota

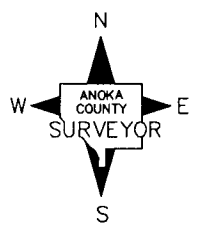
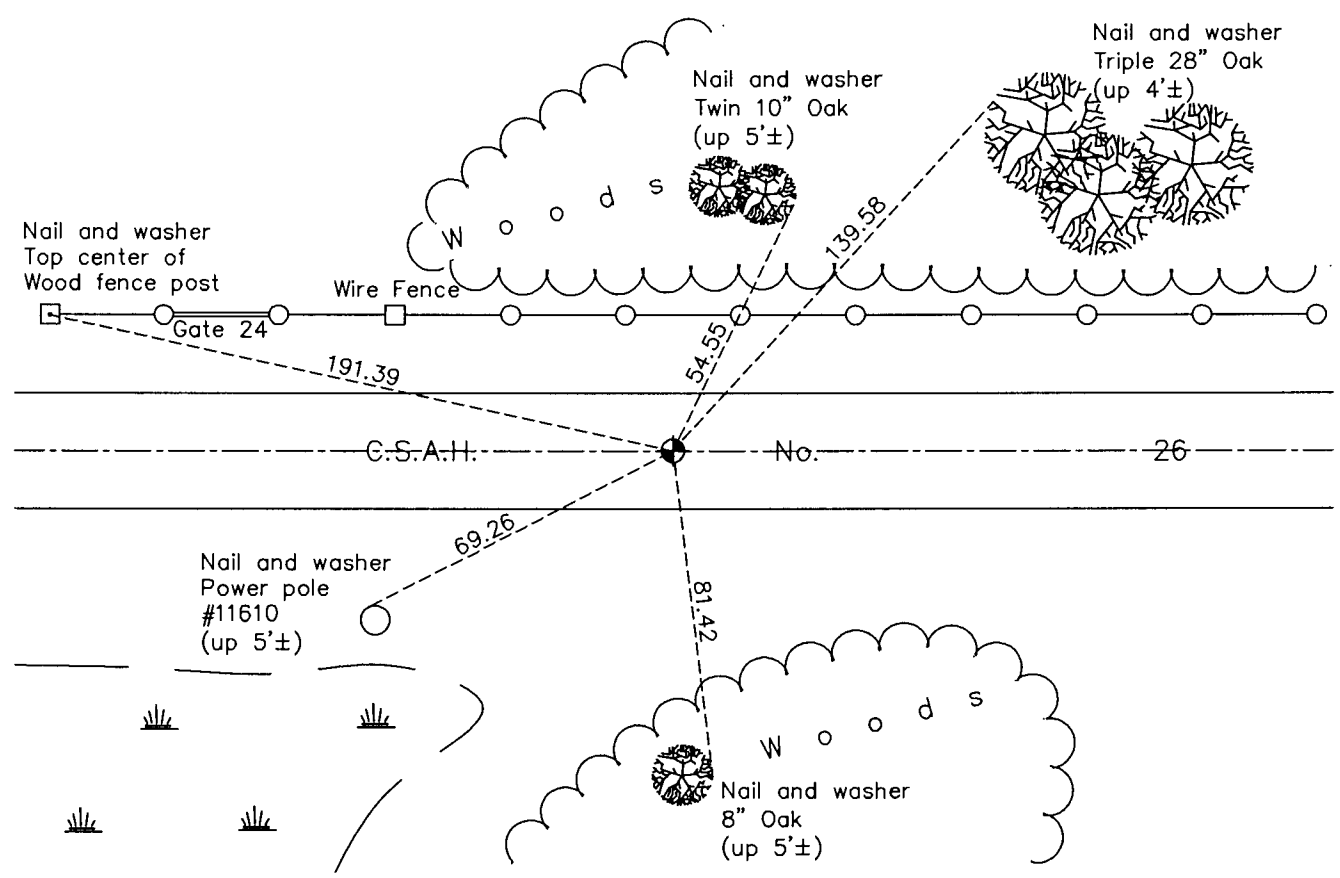
Northwest Corner of Sec. 3 Township 33 Range 23

On the 29th day of November, 1963, the described corner was evidenced by a 3/4" iron pipe

and to perpetuate the location of said corner, at the exact location thereof, a permanent marker was placed consisting of a cast iron monument on centerline

AND on the ____ day of November, 2016, said permanent marker was replaced with a cast iron monument on centerline after road construction and the ties were updated

Updated reference ties are as shown below.



Revision Date
 12/07/16

N.A.D. 1983 Coordinates
 (1996 Adjustment)

County Project Coordinates	
Northing	227559.4113
Easting	516193.3948
Date	3/26/02

I hereby certify that this United States public land survey monument record is correct and complete to the best of my knowledge and belief.

Larry D. Hoium Date 12/07/16
 Larry D. Hoium, Anoka County Surveyor
 Minnesota License Number 18165