

CERTIFICATE OF LOCATION OF GOVERNMENT CORNER

County of Anoka

State of Minnesota

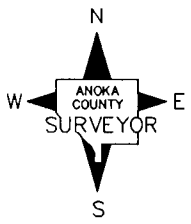
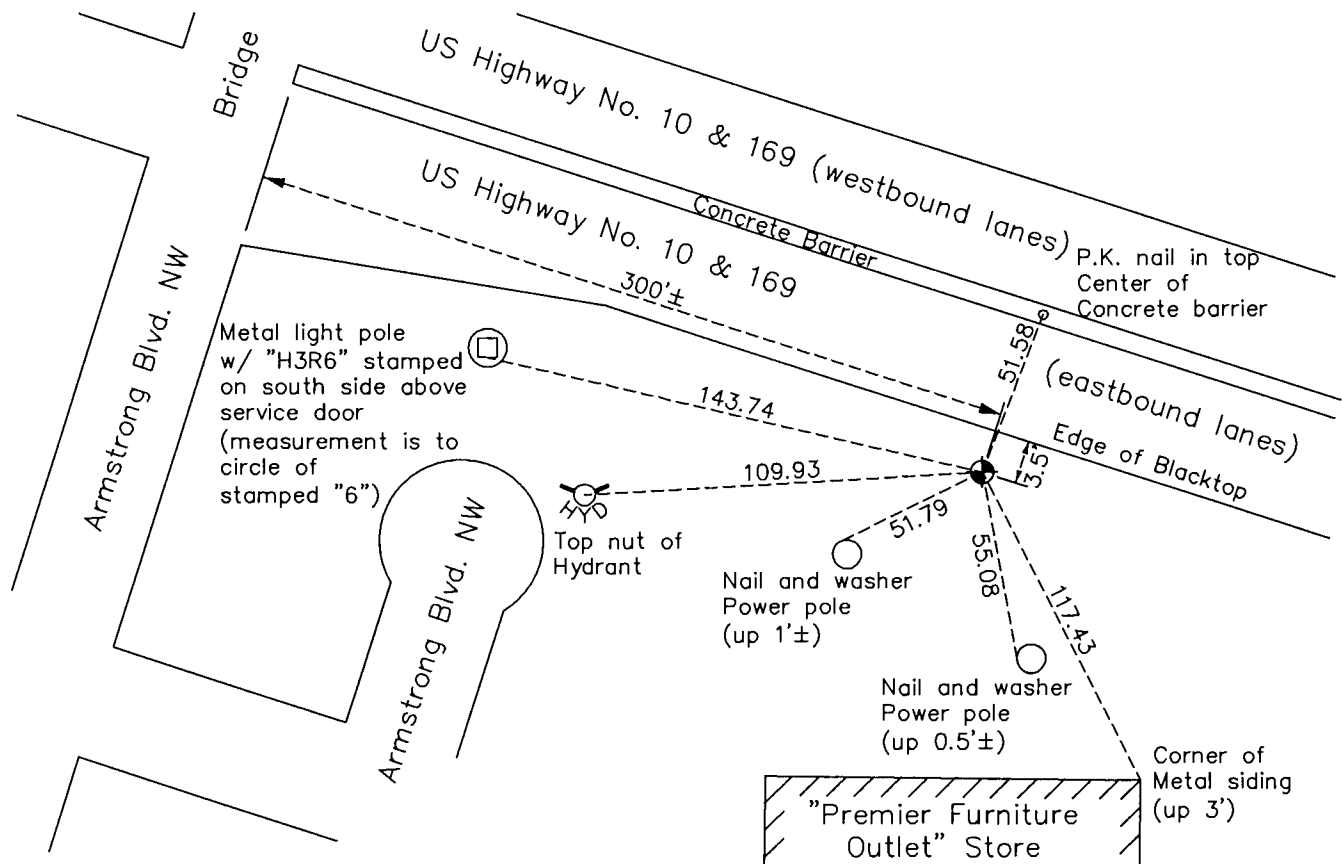
East 1/4 Corner of Sec. 29 Township 32 Range 25

On the 20th day of April, 1961, the described corner was evidenced by a concrete monument

and to perpetuate the location of said corner, at the exact location thereof, a permanent marker was placed consisting of the same concrete monument, down 1.5'±, with a 1" iron pipe on the east side

AND on the 4th day of November, 2016, said permanent marker was replaced with a solid cast iron monument after road construction and the ties were updated

Updated reference ties are as shown below.



Revision Date
12/14/16

N.A.D. 1983 Coordinates
(1996 Adjustment)

County Project Coordinates	
Northing	172474.0871
Easting	447540.6458
Date	5/09/00

I hereby certify that this United States public land survey monument record is correct and complete to the best of my knowledge and belief.

Larry D. Hoium Date 12/14/16

Larry D. Hoium, Anoka County Surveyor
Minnesota License Number 18165